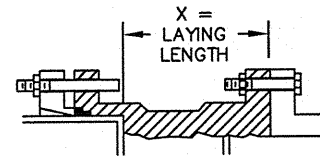
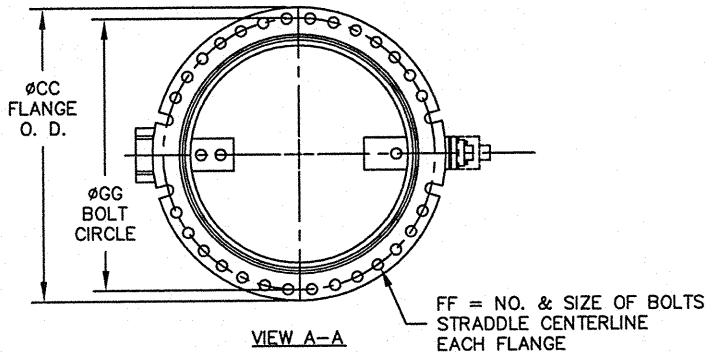
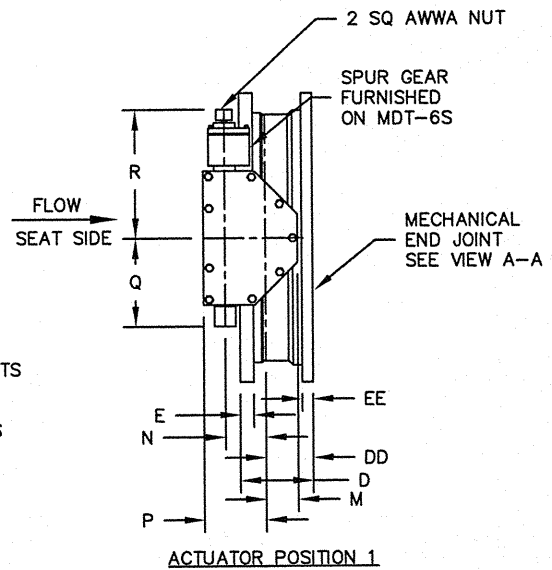
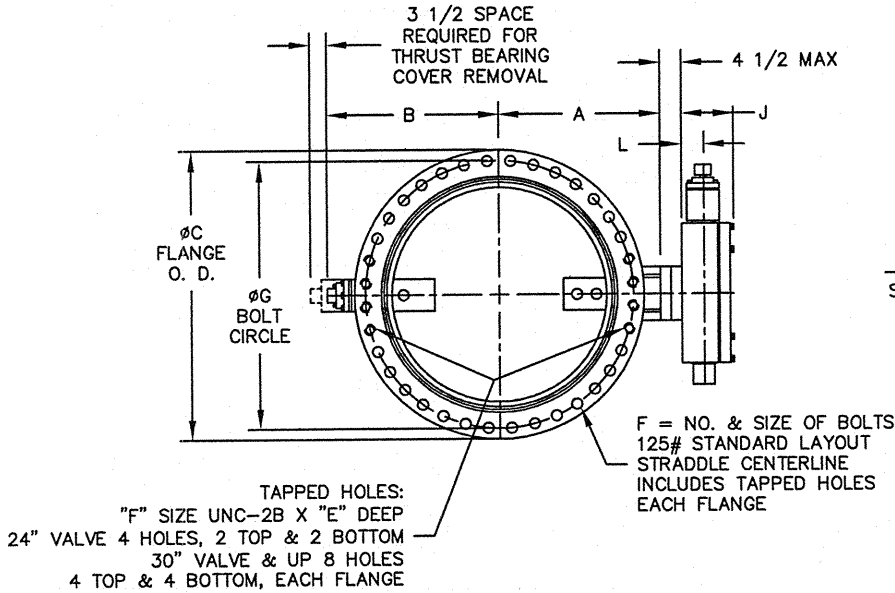


ACTUATOR SIZE	J	L	M	N	P	Q	R	NUMBER OF TURNS
	MDT-4S	6-3/8	2-27/32	3-3/8	4	7-5/16	6-3/4	
MDT-5	7-9/16	3-15/32	4-1/2	5-1/2	8-3/4	10	17	44
MDT-5S	8-5/16	3-15/16	5-1/2	7	10-1/2	15-15/16	19-7/8	136
MDT-6S	10-3/16	5-1/16	7	8-1/4	12-5/8	14-3/16	26-1/2	215

VALVE SIZE	A	B	C	CC	D	DD	E	EE	F	FF	G	GG	X
24	18-5/8	18-5/8	32	31-9/16	10-5/8	6-5/8	1-7/8	1-5/8	20/1-1/4	16/3/4	29-1/2	30	7-1/8
30	21-1/2	24-3/8	38-3/4	39	15	9	2-1/8	1-13/16	28/1-1/4	20/1	36	36-7/8	11
36	25-7/16	28-1/4	46	45-7/8	17	11	2-3/8	2	32/1-1/2	24/1	42-3/4	43-3/4	13



INSTALLATION DIAGRAM
 BOLTS, NUTS, GLANDS
 AND GASKETS FURNISHED
 BY OTHERS

NOTES:

- ALL DIMENSIONS SHOWN IN INCHES.
- "D" DIMENSION $\pm 1/16$ " FOR 6" THRU 10" VALVES.
"D" DIMENSION $\pm 1/8$ " FOR 12" THRU 20" VALVES.
- FOR BOLTS SMALLER THAN $\phi 1-3/4$, BOLT HOLES WILL BE $1/8$ " LARGER THAN DIAMETER OF BOLT.
FOR BOLTS $\phi 1-3/4$ OR LARGER, BOLT HOLES WILL BE $1/4$ " LARGER THAN DIAMETER OF BOLT.
- DIMENSIONS AND DRILLING OF END FLANGE CONFORM TO THE AMERICAN CAST IRON FLANGE STANDARDS, CLASS 125 (B16.1).
- DIMENSIONS AND DRILLING OF MECHANICAL JOINT END CONFORM TO ANSI/ AWWA C111/ A21.11.
- VALVES MANUFACTURED & TESTED IN ACCORDANCE WITH AWWA SPECIFICATION C-504 LATEST REVISION, CLASS 250B.
- RECOMMENDATION FOR MATING FLANGES: WHERE INSULATING BUSHINGS ARE USED, IT IS NECESSARY THAT BOLT HOLES BE DRILLED OVERSIZE BY AN AMOUNT EQUAL TO TWO TIMES THE INSULATING SLEEVE THICKNESS TO MAINTAIN THE SAME MINIMUM CLEARANCE FOR BOLTS.

5-25-17	CHANGED TITLEBLOCK AND TITLE	LF	JW
1-30-09	UPDATED TITLE BLOCK	CEM	JR
REV	DATE	DESCRIPTION	DWN APP

Mueller Co.

GENERAL ARRANGEMENT DRAWING
 LINESEAL XP11 250B BUTTERFLY VALVE
 24"-36", FLANGE X MECHANICAL JOINT ENDS
 MDT W/ BURIED SERVICE NUT

SCALE NONE DATE 5-13-08
 DRAWN BY CEM CHECKED BY JR
 APPROVED GA=BORDER
 DRWG. NO. GA-11802MS REV 2 AC