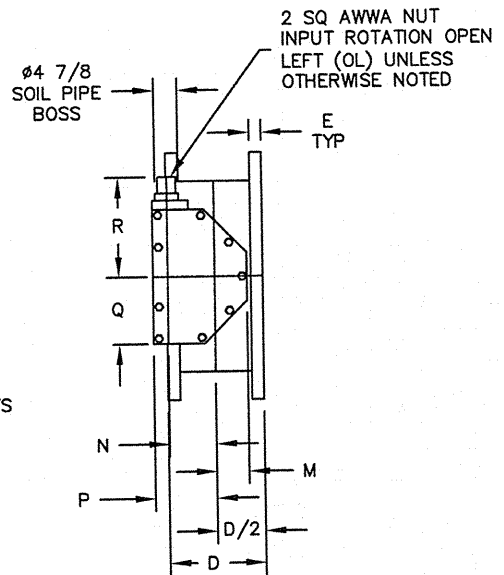
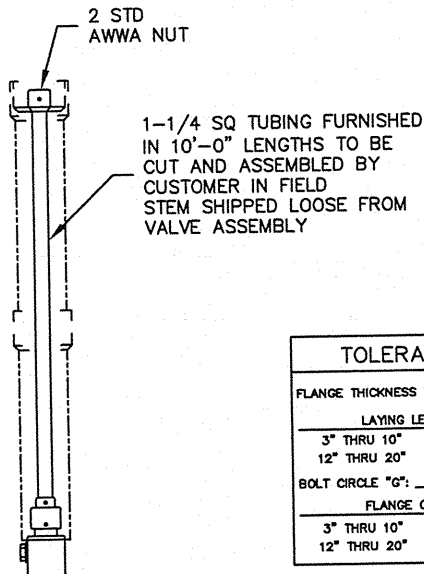


18" & 20" BODIES HAVE TAPPED HOLES
TAPPED HOLES ARE "F" UNC-2B X "E" DEEP
2 HOLES AT TOP AND 2 HOLES
AT BOTTOM PER FLANGE.



ACTUATOR POSITION 1



OPTIONAL EXTENSION
STEM ARRANGEMENT

NOTES:

1. ALL DIMENSIONS SHOWN IN INCHES.
2. "D" DIMENSION $\pm 1/16"$.
3. FLANGE THROUGH BOLT HOLES WILL BE $1/8"$ LARGER THAN DIAMETER OF BOLT.
4. DIMENSIONS AND DRILLING OF END FLANGES CONFORM TO THE AMERICAN CAST IRON FLANGE STANDARDS, CLASS 125 (B16.1).
5. VALVES MANUFACTURED & TESTED IN ACCORDANCE WITH AWWA SPECIFICATION C-504 LATEST REVISION, CLASS 250B.
6. RECOMMENDATION FOR MATING FLANGES: WHERE INSULATING BUSHINGS ARE USED, IT IS NECESSARY THAT BOLT HOLES BE DRILLED OVERSIZE BY AN AMOUNT EQUAL TO TWO TIMES THE INSULATING SLEEVE THICKNESS TO MAINTAIN THE SAME MINIMUM CLEARANCE FOR BOLTS.
7. EXTENSION STEM CAN BE USED WITH STANDARD VALVE BOXES OR 5" SOIL PIPE

TOLERANCES	
FLANGE THICKNESS "E":	$\pm 1/8"$ 0
LAYING LENGTH "D":	
3" THRU 10"	$\pm 1/16"$
12" THRU 20"	$\pm 1/8"$
BOLT CIRCLE "G":	$\pm 1/64"$
FLANGE O.D."C":	
3" THRU 10"	$\pm 1/8"$
12" THRU 20"	$\pm 3/16"$

VALVE SIZE	A	B	C	D	E	F	G
3	4-3/4	3-1/4	7-1/2	5	13/16	4--5/8	6
4	5-1/2	3-1/2	9	5	1	8--5/8	7 1/2
6	6-1/2	5-1/8	11	5	1-1/16	8--3/4	9 1/2
8	7-3/4	6-1/2	13-1/2	6	1-3/16	8--3/4	11 3/4
10	9	9-11/16	16	8	1 3/16	12--7/8	14 1/4
12	10-1/2	11-3/16	19	8	1 5/16	12--7/8	17
14	11-7/8	12-5/8	21	8	1 3/8	16--1	18 3/4
16	13-1/2	14-3/8	23-1/2	8	1 7/16	16--1	21 1/4
18	14-3/8	15-1/4	25	8	1 9/16	16--1 1/8	22 3/4
20	16	16-7/8	27-1/2	8	1 11/16	20--1 1/8	25

ACTUATOR SIZE	VALVE SIZE	J	L	M	N	P	Q	R	NUMBER OF TURNS
MDT-2S	3"-8"	4-11/16	2	2-1/8	2	4-1/2	4-1/4	8-1/4	32
MDT-3S	10"-14"	5-5/8	2-7/16	3-1/4	3-5/32	5-5/8	5-3/8	10-3/8	30
MDT-4S	16" & 18"	6-3/8	2-27/32	3-3/8	4	7-5/16	6-3/4	11-5/16	40
MDT-5	18" & 20"	7-9/16	3-15/32	4-1/2	5-1/2	8-3/4	10	17	44

REV	DATE	DESCRIPTION	DWN	APP
1	5-25-17	CHANGED TITLEBLOCK AND TITLE	LF	JR
2	12-16-16	UPDATED TITLE BLOCK	JWD	RF
3	4-27-11	REVISE COLUMN "E", TOL.	JLM	RCB
4	9-21-09	FIX COLUMN "B" DIMS	SK	RCB

Mueller Co.

GENERAL ARRANGEMENT DRAWING
LINESEAL XPIII 250B BUTTERFLY VALVE
3"-20", FLANGED ENDS
MDT W/BURIED SERVICE NUT

SCALE NONE DATE 1-30-09
DRAWN BY CEM CHECKED BY JR
APPROVED GA=BORDER
DRWG. NO. GA-11868MS REV 4 A/c