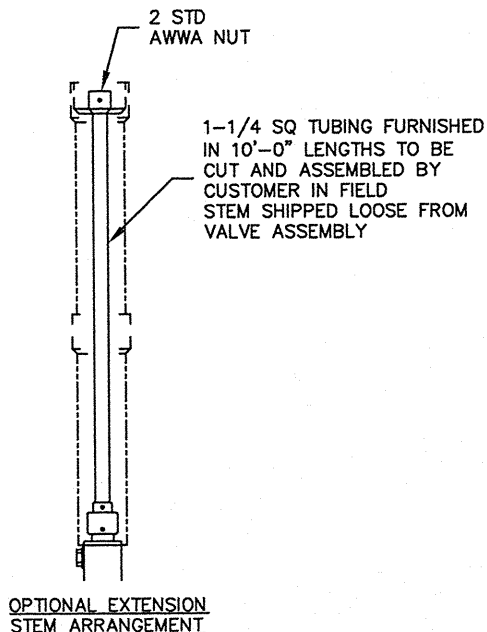


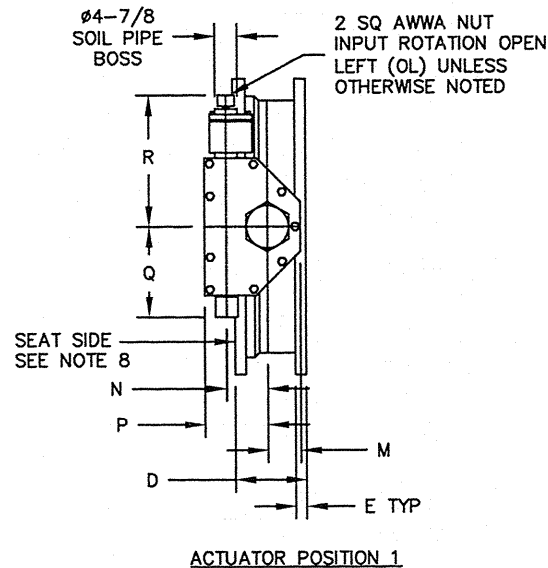
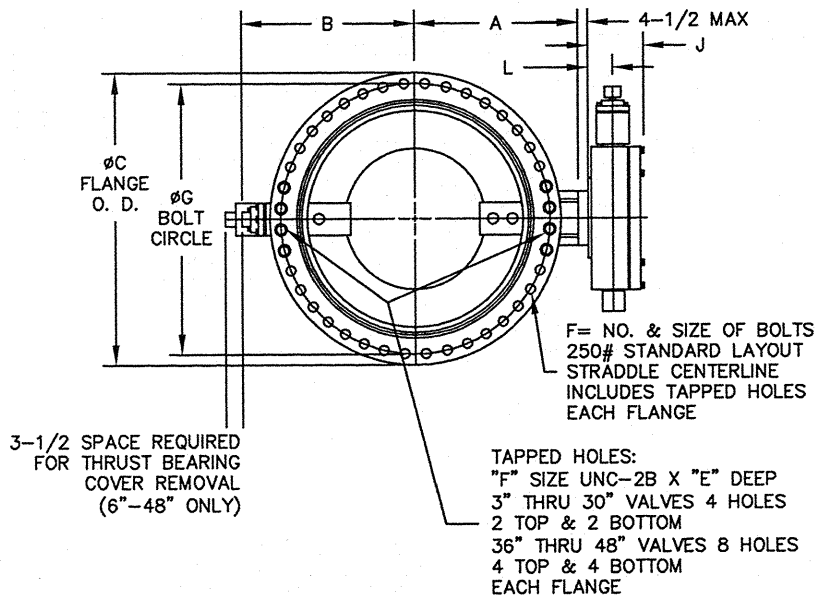
| ACTUATOR SIZE | J | L | M | N | P | Q | R | NUMBER OF TURNS |
|---------------|---------|---------|-------|--------|--------|----------|---------|-----------------|
| MDT-2S | 4-11/16 | 2 | 2-1/8 | 2 | 4-1/2 | 4-1/2 | 8-1/4 | 32 |
| MDT-3S | 5-5/8 | 2-7/16 | 3-1/4 | 3-5/32 | 5-5/8 | 5-3/8 | 10-3/8 | 30 |
| MDT-4S | 6-3/8 | 2-27/32 | 3-3/8 | 4 | 7-5/16 | 6-3/4 | 11-5/16 | 40 |
| MDT-5 | 7-9/16 | 3-15/32 | 4-1/2 | 5-1/2 | 8-3/4 | 10 | 17 | 44 |
| MDT-5S | 8-5/16 | 3-15/16 | 5-1/2 | 3-5/8 | 10-1/2 | 15-15/16 | 19-7/8 | 136 |
| MDT-6S | 10-3/16 | 5-1/16 | 7 | 8-1/4 | 12-5/8 | 14-3/16 | 26-1/2 | 215 |



| VALVE SIZE | A | B | C | D | E | F | G |
|------------|--------|--------|--------|----|---------|-----------|--------|
| 3 | 4-3/4 | 3-1/4 | 8-1/4 | 5 | 1-1/8 | 8--3/4 | 6-5/8 |
| 4 | 5-1/2 | 3-1/2 | 10 | 5 | 1-1/4 | 8--3/4 | 7-7/8 |
| 6 | 7-1/4 | 8-3/8 | 12-1/2 | 6 | 1-1/2 | 12--3/4 | 10-5/8 |
| 8 | 8-1/2 | 9-5/8 | 15 | 8 | 1-5/8 | 12--7/8 | 13 |
| 10 | 9-3/4 | 11 | 17-1/2 | 8 | 1-7/8 | 16--1/8 | 15-1/4 |
| 12 | 11-1/2 | 12-5/8 | 20-1/2 | 8 | 2 | 16--1-1/8 | 17-3/4 |
| 14 | 12-3/4 | 13-7/8 | 23 | 12 | 2-1/8 | 20--1-1/8 | 20-1/4 |
| 16 | 14 | 15-1/8 | 25-1/2 | 12 | 2-1/4 | 20--1-1/4 | 22-1/2 |
| 18 | 15-1/4 | 16-3/8 | 28 | 12 | 2-3/8 | 24--1-1/4 | 24-3/4 |
| 20 | 17 | 17-5/8 | 30-1/2 | 12 | 2-1/2 | 24--1-1/4 | 27 |
| 24 | 19-3/4 | 20-1/4 | 36 | 12 | 2-3/4 | 24--1-1/2 | 32 |
| 30 | 25-5/8 | 26 | 43 | 12 | 3 | 28--1-3/4 | 39-1/4 |
| 36 | 28-1/8 | 31-1/8 | 50 | 15 | 3-3/8 | 32--2 | 46 |
| 42 | 32-1/8 | 35-1/8 | 57 | 15 | 3-11/16 | 36--2 | 52-3/4 |
| 48 | 36-1/4 | 39-5/8 | 65 | 15 | 4 | 40--2 | 60-3/4 |

FOR BI-DIRECTIONAL SERVICE ACTUATOR IS SUITABLE FOR FLOW IN EITHER DIRECTION SEE NOTE 8

FOR UNI-DIRECTIONAL SERVICE ACTUATOR IS SIZED FOR FLOW IN THIS DIRECTION ONLY SEE NOTE 8



NOTES:

- ALL DIMENSIONS SHOWN IN INCHES.
- "D" DIMENSION $\pm 1/8$ ".
- FOR BOLTS SMALLER THAN $\phi 1-3/4$, BOLT HOLES WILL BE $1/8$ " LARGER THAN DIAMETER OF BOLT. FOR BOLTS $\phi 1-3/4$ OR LARGER, BOLT HOLES WILL BE $1/4$ " LARGER THAN DIAMETER OF BOLT.
- DIMENSIONS AND DRILLING OF END FLANGES CONFORM TO THE AMERICAN CAST IRON FLANGE STANDARDS, CLASS 250 (B16.1).
- RECOMMENDATION FOR MATING FLANGES: WHERE INSULATING BUSHINGS ARE USED, IT IS NECESSARY THAT BOLT HOLES BE DRILLED OVERSIZE BY AN AMOUNT EQUAL TO TWO TIMES THE INSULATING SLEEVE THICKNESS TO MAINTAIN THE SAME MINIMUM CLEARANCE FOR BOLTS.
- CAUTION: IT IS RECOMMENDED THAT VALVES BE INSTALLED INTO THE PIPING SYSTEM IN ACCORDANCE WITH AWWA M-11 IN ORDER TO PREVENT ANY UNDUE PIPING STRESS, DEFLECTION OR BENDING THAT MAY AFFECT THE PERFORMANCE OF THE VALVE.
- EXTENSION STEM CAN BE USED WITH STANDARD VALVE BOXES OR 5" SOIL PIPE.
- SEAT SIDE AND FLOW DIRECTION APPLIES TO 6" AND LARGER E-LOK SEAT VALVE ONLY. 3 AND 4" VALVES ARE BONDED SEAT VALVES.

| | | | | |
|-----|----------|--|-----|-----|
| 5 | 10-2-17 | ADDED NOTE 8 | SAD | SS |
| 4 | 5-25-17 | CHANGED TITLEBLOCK AND TITLE | LF | JWR |
| 3 | 12-27-16 | REVISED MDT-6S "J" REVISED MDT-5S "N" | JMD | RF |
| 2 | 4-15-11 | REVISED "E" COLUMN | JLM | RCB |
| 1 | 9-21-09 | 4BE WAS 4 | SK | RCB |
| REV | DATE | DESCRIPTION | DWN | APP |

Mueller Co.

GENERAL ARRANGEMENT DRAWING
LINESEAL XP 250B BUTTERFLY VALVE
3"-48", FLANGED ENDS
MDT W/ BURIED SERVICE NUT

SCALE NONE DATE 1-30-09
DRAWN BY CEM CHECKED BY JR
APPROVED GA=BORDER
DRWG. NO. GA-11870MS REV 5