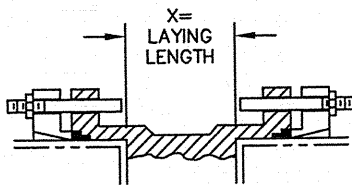
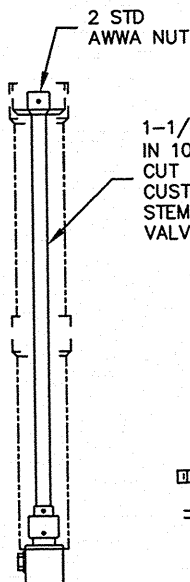
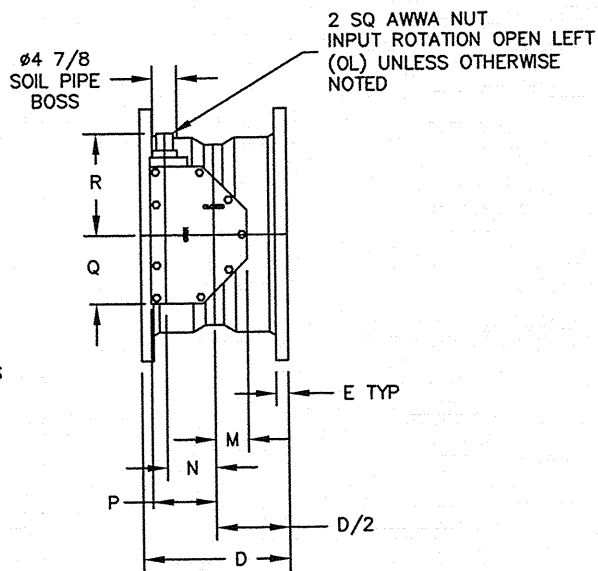
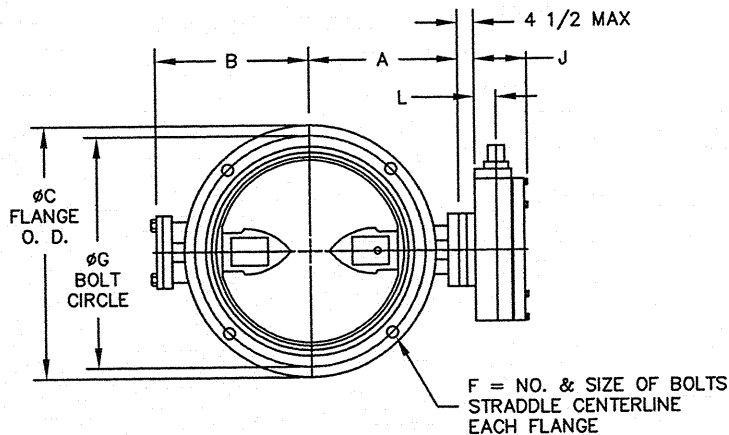


PIPE SIZE	PIPE O. D.	MIN. MATING I. D.
4	4.80	3.00
6	6.90	5.59
8	9.05	7.55
10	11.10	9.83
12	13.20	11.60
14	15.65	12.81
16	17.80	14.81
18	19.92	16.85
20	22.06	18.86

ACTUATOR SIZE	VALVE SIZE	J	L	M	N	P	Q	R	NUMBER OF TURNS
MDT-2S	3"-8"	4-11/16	2	2-1/8	2	4-1/2	4-1/4	8-1/4	32
MDT-3S	8"-14"	5-5/8	2-7/16	3-1/4	3-5/32	5-5/8	5-3/8	10-3/8	30
MDT-4S	16" & 18"	6-3/8	2-27/32	3-3/8	4	7-5/16	6-3/4	11-5/16	40
MDT-5	18" & 20"	7-9/16	3-15/32	4-1/2	5-1/2	8-3/4	10	17	44

VALVE SIZE	A	B	C	D	E	F	G	X
4	5-1/2	3-1/2	9	8-1/8	1	4--3/4	7 1/2	3-1/8
6	6-1/2	5-1/8	11	8-1/2	1	6--3/4	9 1/2	3-1/2
8	7-3/4	6-1/2	13-1/4	8-5/8	1-1/8	6--3/4	11 3/4	3-5/8
10	9	9-7/8	15-9/16	10	1-3/16	8--3/4	14	5
12	10-1/2	11-3/8	17-15/16	10-1/2	1-1/4	8--3/4	16-1/4	5-1/2
14	11-7/8	12-3/4	20-5/16	11-1/2	1-5/16	10--3/4	18 3/4	4-1/2
16	13-1/2	14-3/8	22-9/16	12	1-3/8	12--3/4	21	5
18	14-3/8	15-1/4	24-11/16	12-1/4	1-3/8	12--3/4	23-1/4	5-1/4
20	16	16-7/8	27-3/32	12-1/2	1-1/2	14--3/4	25-1/2	5-1/2



OPTIONAL EXTENSION STEM ARRANGEMENT

INSTALLATION DIAGRAM
BOLTS, NUTS, GLANDS
AND GASKETS FURNISHED
BY OTHERS

NOTES:

1. ALL DIMENSIONS SHOWN IN INCHES.
2. "D" DIMENSION $\pm 1/16$ " FOR 4" VALVES.
"D" DIMENSION $+1/8$ " -0 FOR 6" THRU 20" VALVES.
3. BOLT HOLES WILL BE 1/8" LARGER THAN DIAMETER OF BOLT.
4. DIMENSIONS AND DRILLING OF MECHANICAL JOINT ENDS CONFORM TO ANSI/ AWWA C111/ A21.11.
5. VALVES MANUFACTURED & TESTED IN ACCORDANCE WITH AWWA SPECIFICATION C-504 LATEST REVISION, CLASS 250B.
6. EXTENSION STEM CAN BE USED WITH STANDARD VALVE BOXES OR 5" SOIL PIPE
7. CAUTION: WHEN USING 10" AND 12" VALVES ON CLASS 200 PVC PIPE, PIPE END I.D. MUST BE BEVELLED TO ENSURE CLEARANCE FOR DISC AND PROPER VALVE OPERATION.

REV	DATE	DESCRIPTION	DWN	APP
4	01/13/17	REM SLOTS FROM PICTURE	JMD	JR
3	12/16/16	CORRECTED 10" TO "X" CORRECTED 12" TO "X"	JMD	RF
2	12/14/11	CORRECT NOTE 7	CEM	MNB
1	11/28/11	CORRECTED TITLE BLOCK	CEM	JU

Mueller Co.

4" - 20" LINESEAL XP250II
MECHANICAL JOINT ENDS
MDT BURIED SERVICE ACTUATOR

SCALE NONE DATE 2/2/09
DRAWN BY CEM CHECKED BY JR
APPROVED GA-BORDER
DRWG. NO. GA-11872MS REV 4 A/C