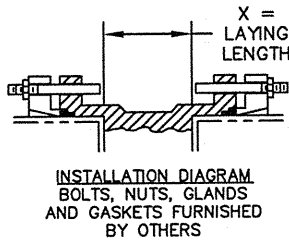


OPTIONAL EXTENSION STEM ARRANGEMENT



NOTES:

1. ALL DIMENSIONS SHOWN IN INCHES.
2. "D" DIMENSION $\pm 1/8$ ".
3. FOR BOLTS SMALLER THAN $\phi 1-3/4$, BOLT HOLES WILL BE $1/8$ " LARGER THAN DIAMETER OF BOLT. FOR BOLTS $\phi 1-3/4$ OR LARGER, BOLT HOLES WILL BE $1/4$ " LARGER THAN DIAMETER OF BOLT.
4. DIMENSIONS & DRILLING OF MECHANICAL JOINT ENDS CONFORM TO ANSI/ AWWA C111/ A21.11
5. CAUTION: IT IS RECOMMENDED THAT VALVES BE INSTALLED INTO THE PIPING SYSTEM IN ACCORDANCE WITH AWWA M-11 IN ORDER TO PREVENT ANY UNDUE PIPING STRESS, DEFLECTION OR BENDING THAT MAY EFFECT THE PERFORMANCE OF THE VALVE.
6. EXTENSION STEM CAN BE USED WITH STANDARD VALVE BOXES OR 5" SOIL PIPE.

VALVE SIZE	A	B	C	D	E	F	G	X
6	7-1/4	8-3/8	11-1/16	10	1-1/16	6--3/4	9-1/2	5
8	8-1/2	9-5/8	13-5/16	10	1-1/8	6--3/4	11-3/4	5
10	9-3/4	11	15-5/8	10	1-3/16	8--3/4	14	5
12	11-1/2	12-5/8	17-7/8	10	1-1/4	8--3/4	16-1/4	5
14	12-3/4	13-7/8	20-1/4	12-1/2	1-5/16	10--3/4	18-3/4	5-1/2
16	14	15-1/8	22-1/2	12-1/2	1-3/8	12--3/4	21	5-1/2
18	15-1/4	16-3/8	24-3/4	13-1/4	1-7/16	12--3/4	23-1/4	6-1/4
20	17	17-5/8	27	13-1/4	1-1/2	14--3/4	25-1/2	6-1/4
24	19-3/4	20-1/4	31-1/2	13-1/4	1-5/8	16--3/4	30	6-1/4
30	25-5/8	25-1/2	39	18	1-13/16	20--1-1/8	36-7/8	10
36	28-1/8	30-5/8	45-7/8	22	2	24--1-1/8	43-3/4	14

ACTUATOR SIZE	J	L	M	N	P	Q	R	NUMBER OF TURNS
MDT-2S	4-11/16	2	2-1/8	2	4-1/2	4-1/4	8-1/4	32
MDT-3S	5-5/8	2-7/16	3-1/4	3-5/32	5-5/8	5-3/8	10-3/8	30
MDT-4S	6-3/8	2-27/32	3-3/8	4	7-5/16	6-3/4	11-5/16	40
MDT-5	7-9/16	3-15/32	4-1/2	5-1/2	8-3/4	10-7/16	17	44
MDT-5S	8-5/16	3-15/16	5-1/2	3-5/8	10-1/2	15-15/16	18-5/8	136
MDT-6S	10-3/16	5-1/16	7	8-1/4	12-5/8	18-9/16	26-1/2	215

5-25-17	CHANGED TITLEBLOCK AND TITLE	LF	W
REV	DATE	DESCRIPTION	DWN APP

Mueller Co.

GENERAL ARRANGEMENT DRAWING
LINESEAL 350 BUTTERFLY VALVE
6"-36", MECHANICAL JOINT ENDS
MDT W/ BURIED SERVICE NUT

SCALE	NONE	DATE	4-10-17
DRAWN BY	JCL	CHECKED BY	RF
APPROVED		GA=BORDER	
DRWG. NO.	GA-1207OMS	REV	1