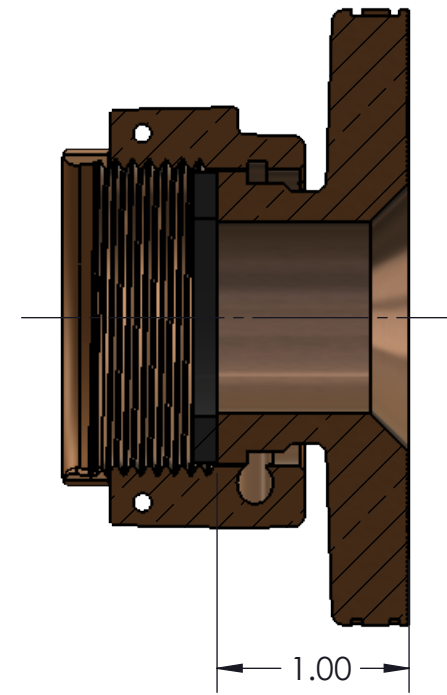
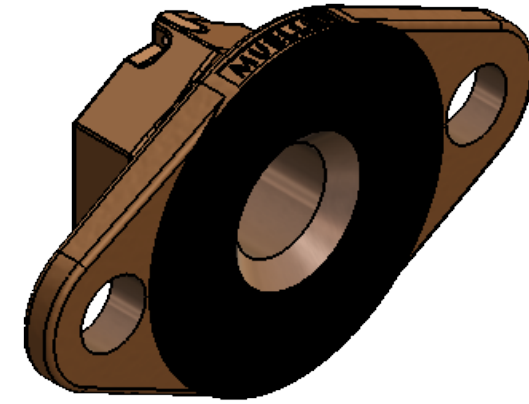
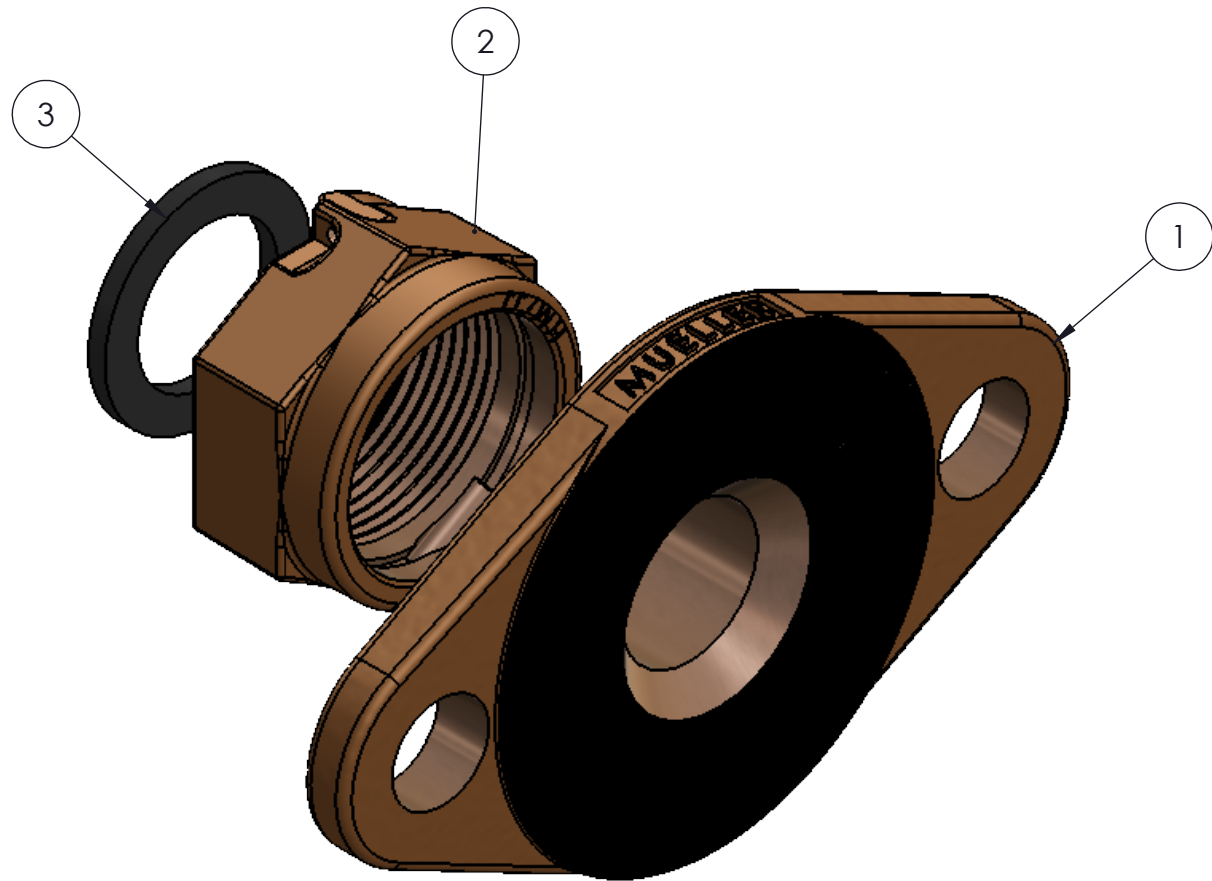


ITEM NO.	PART NUMBER	DESCRIPTION	QTY.
1	538613E	METER ADAPTER, 1" METER NUT x 1-1/2" FLANGE	1
2	526462	METER NUT	1
3	052419	RUBBER GASKET	1

REVISIONS					
REV.	ECR	DESCRIPTION	DRAFTER	DATE	APPROVED



**UNLESS OTHERWISE SPECIFIED:**  
 DIMENSIONS ARE IN INCHES  
 MACHINING TOLERANCES:  
 ANGULAR: MACH ±30'  
 BEND ±30'  
 ONE PLACE DECIMAL ±0.1  
 TWO PLACE DECIMAL ±0.015  
 THREE PLACE DECIMAL ±0.005  
 BREAK CORNERS .015  
 FINISH  $\sqrt{125}$  RMS

	NAME	DATE
DRAFTER	ATJ	27-NOV-18
P.E. APPR.	XXX	XXX
M.E. APPR.	XXX	XXX
Q.A. APPR.	XXX	XXX



**TITLE:**  
 1" METER SWIVEL NUT x 1-1/2" METER  
 FLANGE, BRASS ONLY

MATERIAL  
 ASSEMBLY  
 STK. NUMBER NONE  
 REF. NO. NONE

DO NOT SCALE DRAWING  
 ○ = CRITICAL ( ) = REFERENCE

SIZE **B**  
 DWG. NUMBER H-10879 336N  
 REV -  
 SCALE: 1:1 WT: 1.7330 lbs SHEET 1 OF 1

TITLE TO AND OWNERSHIP OF THIS ENGINEERING DATA REMAINS IN Mueller Co. NO USE IS TO BE MADE OF THIS DATA EXCEPT AS SPECIFICALLY AUTHORIZED BY Mueller Co. ASSENT ON THE PART OF THE RECIPIENT TO THESE CONDITIONS IS PRESUMED