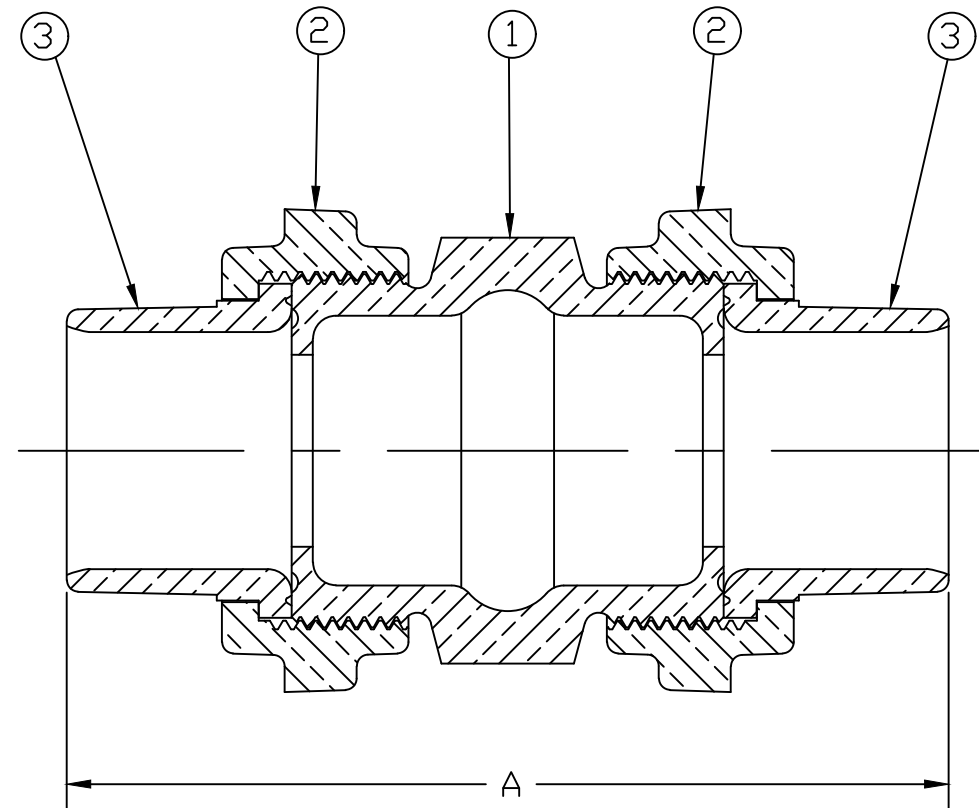


No.	DESCRIPTION	MATERIAL
1	SPUD	CAST LOW LEAD BRASS ALLOY
2	COUPLING NUT	CAST BRASS ASTM B62 ALLOY C83600
3	TAILPIECE	CAST LOW LEAD BRASS ALLOY



SIZE	A
1/2"	3.781
5/8"	4.094
3/4"	4.594

ALL WETTED PARTS ARE LOW LEAD BRASS ALLOY

FILEPATH: PROD-ENG\MUELLER\ASYSUBMITTALS\H10052N

						DRFTR	RWB	10/14/19	MUELLER	UNLESS OTHERWISE NOTED THIRD ANGLE PROJECTION SURFACE PREPARATION: BREAK CORNER(S) ---- .000 SURFACE FINISH -- XX RMS TOLERANCE(S): LINEAR ----- ± .000 ANGULAR ----- ± 0°00'	REF. No.	SCALE	
						CHKR							
						ENGR							
						MGR							
							BY	DATE					
								STK No:					
								MAT'L:					
								DESCR.	EXTRA STRONG LLB FLANGE x LEAD FLANGE			DWG NUMBER H10052N	
								REV	ECR	DESCRIPTION	DATE	BY	CHKR
								PER EST NO: DXXXX EST FIN WT = 0.0000 lbs					

TITLE TO AND OWNERSHIP OF THIS ENGINEERING DATA REMAINS IN Mueller Co. NO USE IS TO BE MADE OF THIS DATA EXCEPT AS SPECIFICALLY AUTHORIZED BY Mueller Co. ASSENT ON THE PART OF THE RECIPIENT TO THESE CONDITIONS IS PRESUMED.

DWG NUMBER
H10052N