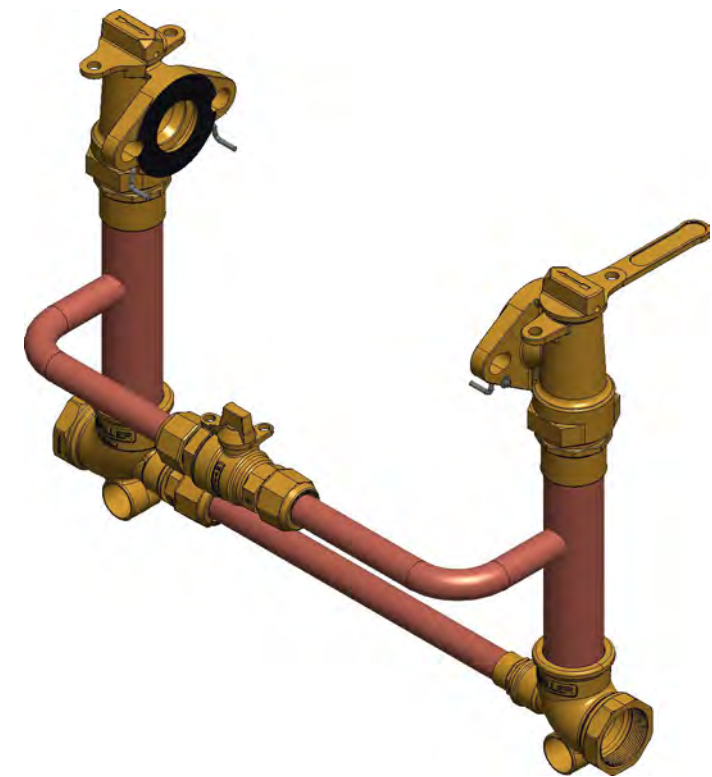
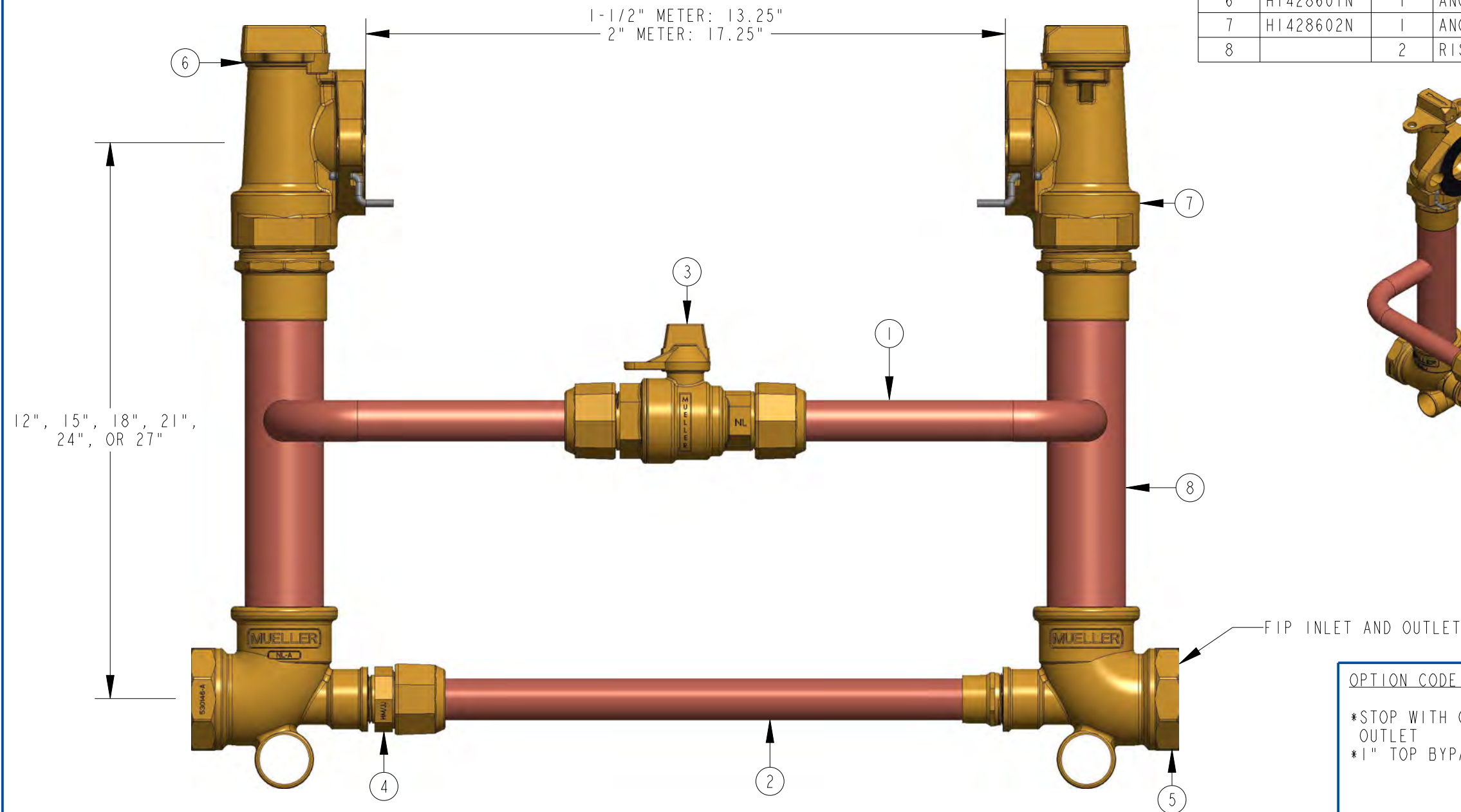


ITEM NO	PART NUMBER	QTY	DESCRIPTION
1	534682	2	1" HIGH BYPASS TUBING
2		1	TIE BAR SUB ASSEMBLY
3	330B25146N	1	INLINE BALL VALVE W/ 110 COMP. BOTH ENDS
4	HI5428N	1	MIP X CTS COMPRESSION TAILPIECE
5		2	TEE - FIP X SOLDER X FIP
6	HI428601N	1	ANGLE METER STOP
7	HI428602N	1	ANGLE METER STOP WITH HANDLE
8		2	RISER SUB ASSEMBLY



FIP INLET AND OUTLET

OPTION CODE 00:

- *STOP WITH COMBO LOCKING AND LEVER HANDLE ON OUTLET
- *1" TOP BYPASS

12", 15", 18", 21",
24", OR 27"

HI 423- - - - 00N

DR. BY	AOD	4/14/22	UNLESS OTHERWISE NOTED	THIRD ANGLE PROJECTION	C.B. NO.
CHKR			BREAK CAST CORNER(S)---		
ENGR			BREAK MACH CORNER(S)---	PURCH.	PATT. NO.
MGR			TOLERANCES	FINISH	
MFG			UNLESS OTHERWISE NOTED	REF. NO.	SCALE
TOOL			LINEAR		NONE
FDRY			±	ANGULAR	STK. NO.
MAT'L:					
		DESCR.	COPPER METER SETTER LOW LEAD BRASS		NUMBER HI 423- - - - 00N