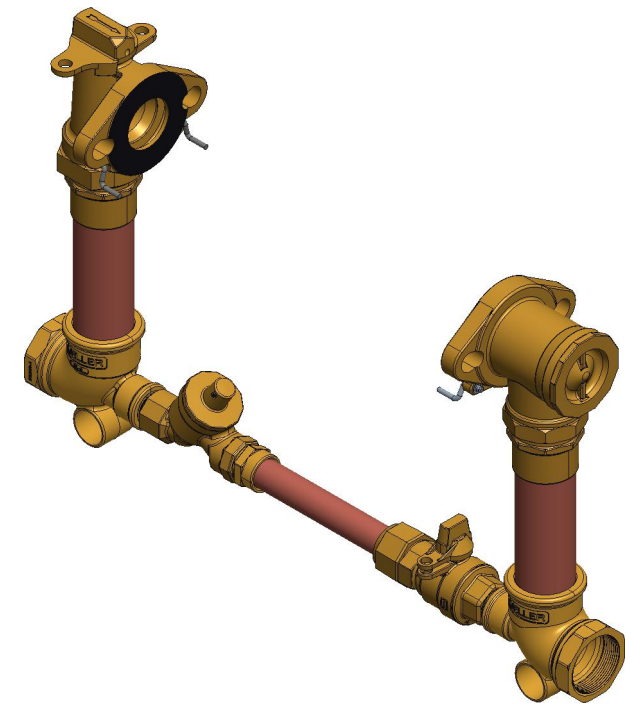
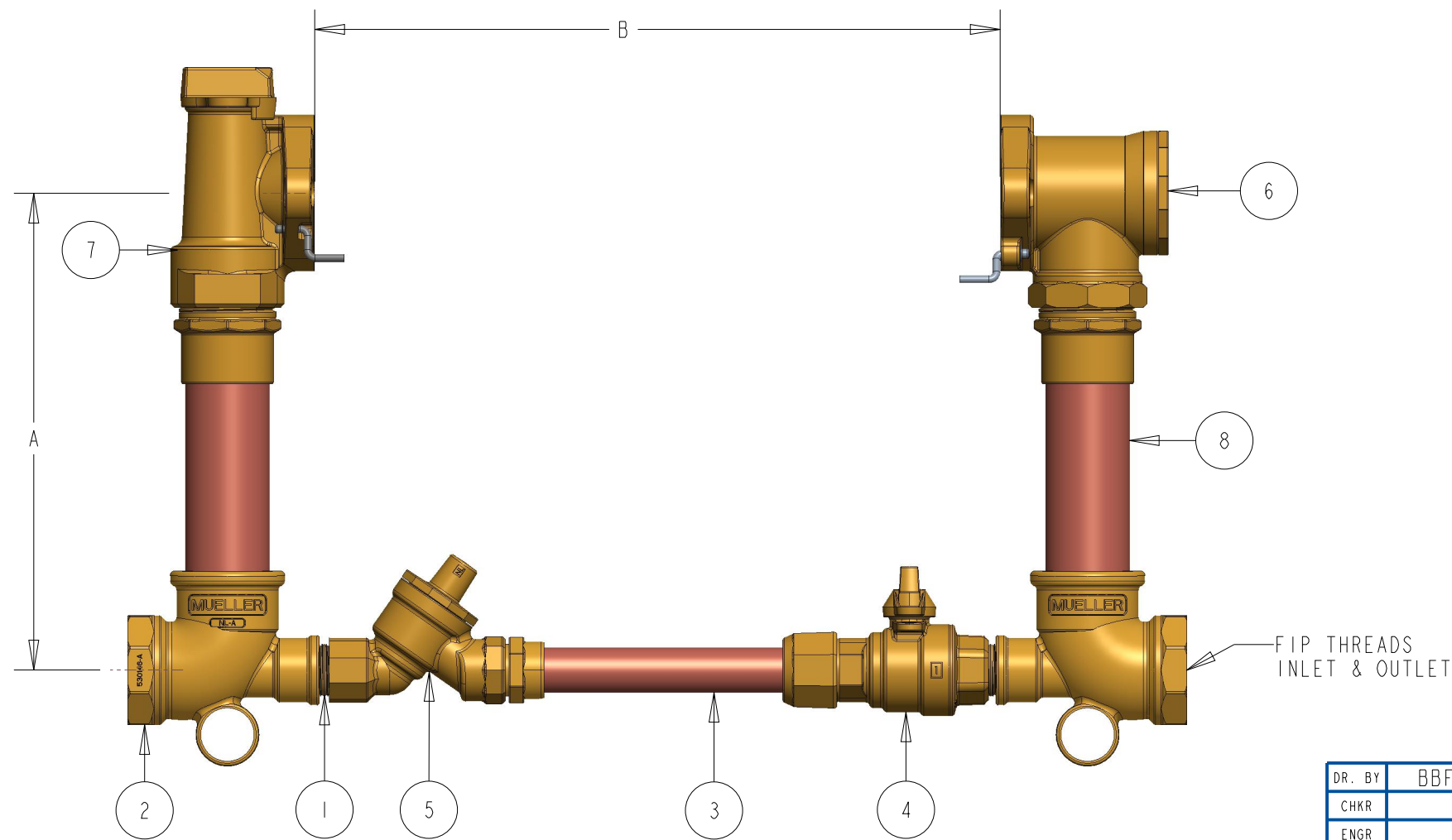


METER SIZE	1-1/2"	2"
A (MINIMUM)	12"	12"
B	13-1/4"	17-1/4"
TEE (FIP X SOLDER X 1" FIP)	527324	530146
1" BY-PASS SUB ASSEMBLY	282637E	283236E
DUAL CHECK VALVE	500HI4244N	550HI4244N
ANGLE METER STOP	500HI42860IN	550HI42860IN

ITEM NO	PART NUMBER	QTY	DESCRIPTION	MATERIAL
1	047139	2	1" CLOSED NIPPLE	RED BRASS ASTM B43 ALLOY C23000 O61 TEMPER ANNEALED
2		2	TEE (FIP X SOLDER X 1" FIP)	LEAD FREE BRASS ALLOY ASTM B584 C89833/C87850
3		1	1" BY-PASS SUB ASSEMBLY	HARD COPPER TUBING UNS C12200 H80 TEMPER
4	330B25170N	1	INLINE BALL VALVE (110 X FIP)	LEAD FREE BRASS ALLOY ASTM B584 C89833/C87850
5	330HI4243	1	1" INLINE CHECK VALVE	LEAD FREE BRASS ALLOY ASTM B584 C89833/C87850
6	HI4244N	1	DUAL CHECK VALVE	LEAD FREE BRASS ALLOY ASTM B584 C89833/C87850
7	HI42860IN	1	ANGLE METER STOP	LEAD FREE BRASS ALLOY ASTM B584 C89833/C87850
8		2	RISER SUB ASSEMBLY	HARD COPPER TUBING UNS C12200 H80 TEMPER



H1423--2--N
 (B)
 ADDED MATERIALS
 TO CHART
 AOD
 3/02/23

DR. BY	BBF	5/1/18	UNLESS OTHERWISE NOTED	THIRD ANGLE PROJECTION	C.B. NO.
CHKR			BREAK CAST CORNER(S)---		
ENGR			BREAK MACH CORNER(S)---	PURCH.	PATT. NO.
MGR			TOLERANCES	FINISH	
MFG			UNLESS OTHERWISE NOTED	REF. NO.	SCALE
TOOL			LINEAR	±	NONE
FDRY			ANGULAR	±	
MAT'L:			STK. NO.		
MUELLER			DESCR.	NUMBER	
			COPPER METER SETTER LEAD FREE BRASS	H1423--2--N	