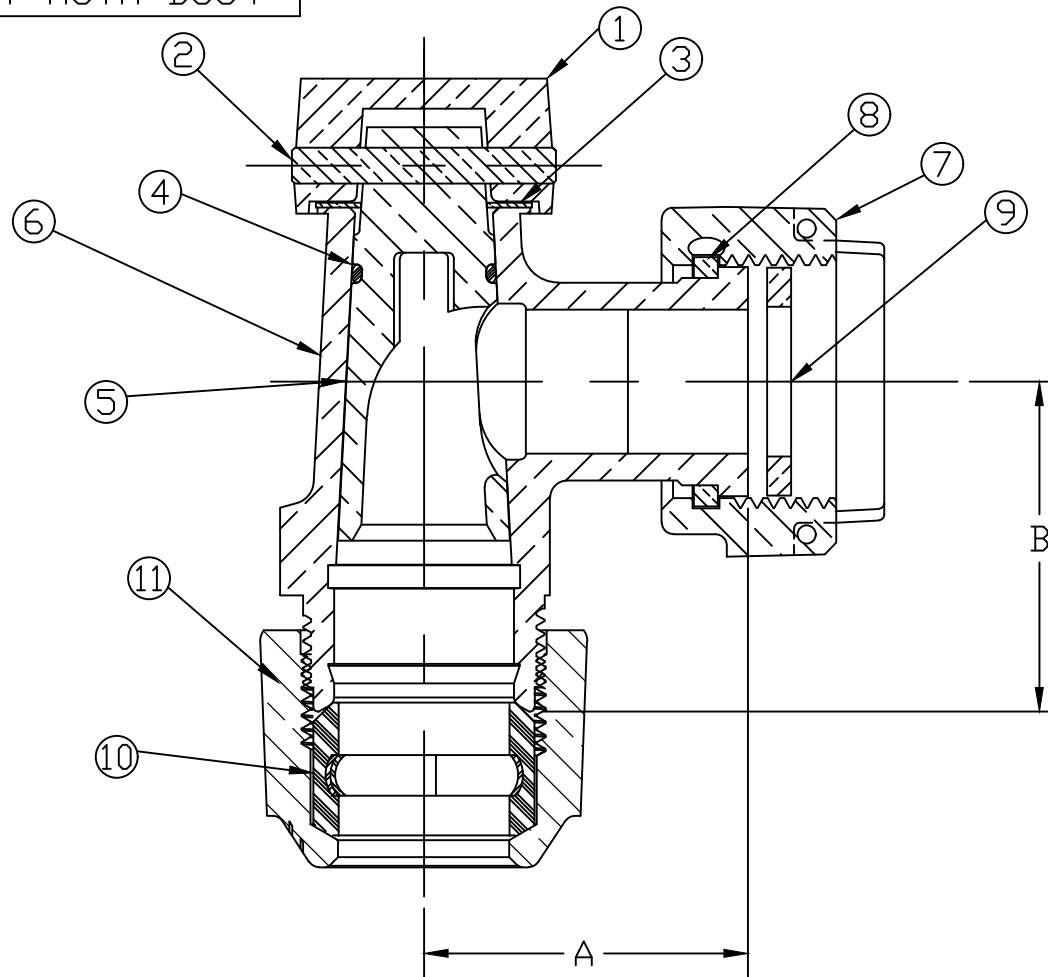


No.	DESCRIPTION	MATERIAL	No.	DESCRIPTION	MATERIAL
1	KEY CAP	CAST BRASS ALLOY ASTM B584	7	SADDLE NUT	CAST BRASS ALLOY ASTM B584
2	PIN	CAST BRASS ALLOY ASTM B584	8	SNAP RING	PHOS BRONZE
3	SPRING WASHER	PHOS BRONZE	9	RUBBER GASKET	NITRILE ASTM D2000
4	O-RING	EPDM D2000	10	GASKET	ASTM D2000 (SBR)&410 STAINLESS STL
5	KEY	LEAD FREE BRASS ALLOY ASTM B584	11	CONN NUT	CAST BRASS ALLOY ASTM B584
6	BODY	LEAD FREE BRASS ALLOY ASTM B584			



METER CONNX SIZE	A	B
5/8 x 3/4	1-11/16"	1-23/32"
5/8 x 3/4 X 3/4	1-11/16"	1-23/32"
5/8 x 3/4 X 1	1-11/16"	1-31/32"
1	1-15/16"	2-1/8"

MEETS ALL REQUIREMENTS OF AWWA C800
 ALL WETTED PARTS ARE LEAD FREE BRASS ALLOY C89833/C87850
 ALL NON WETTED PARTS ARE BRASS ALLOY C83600/C87850

DRFTR	AD	03/15/23	MUELLER	
CHKR				
ENGR			UNLESS OTHERWISE NOTED	THIRD ANGLE PROJECTION
MGR				SURFACE PREPARATION: BREAK CORNER(S) ----- .000
	BY	DATE	SURFACE FINISH -- XX RMS	FULL
			TOLERANCE(S): LINEAR ----- ± .000	
			ANGULAR ----- ± 0°00'	
STK No:			DESCR. ANGLE METER STOP 110 CTS x MTR	
MAT'L:			DWG NUMBER H14258N	

TITLE TO AND OWNERSHIP OF THIS ENGINEERING DATA REMAINS IN Mueller Co. NO USE IS TO BE MADE OF THIS DATA EXCEPT AS SPECIFICALLY AUTHORIZED BY Mueller Co. ASSENT ON THE PART OF THE RECIPIENT TO THESE CONDITIONS IS PRESUMED

DWG NUMBER
H14258N