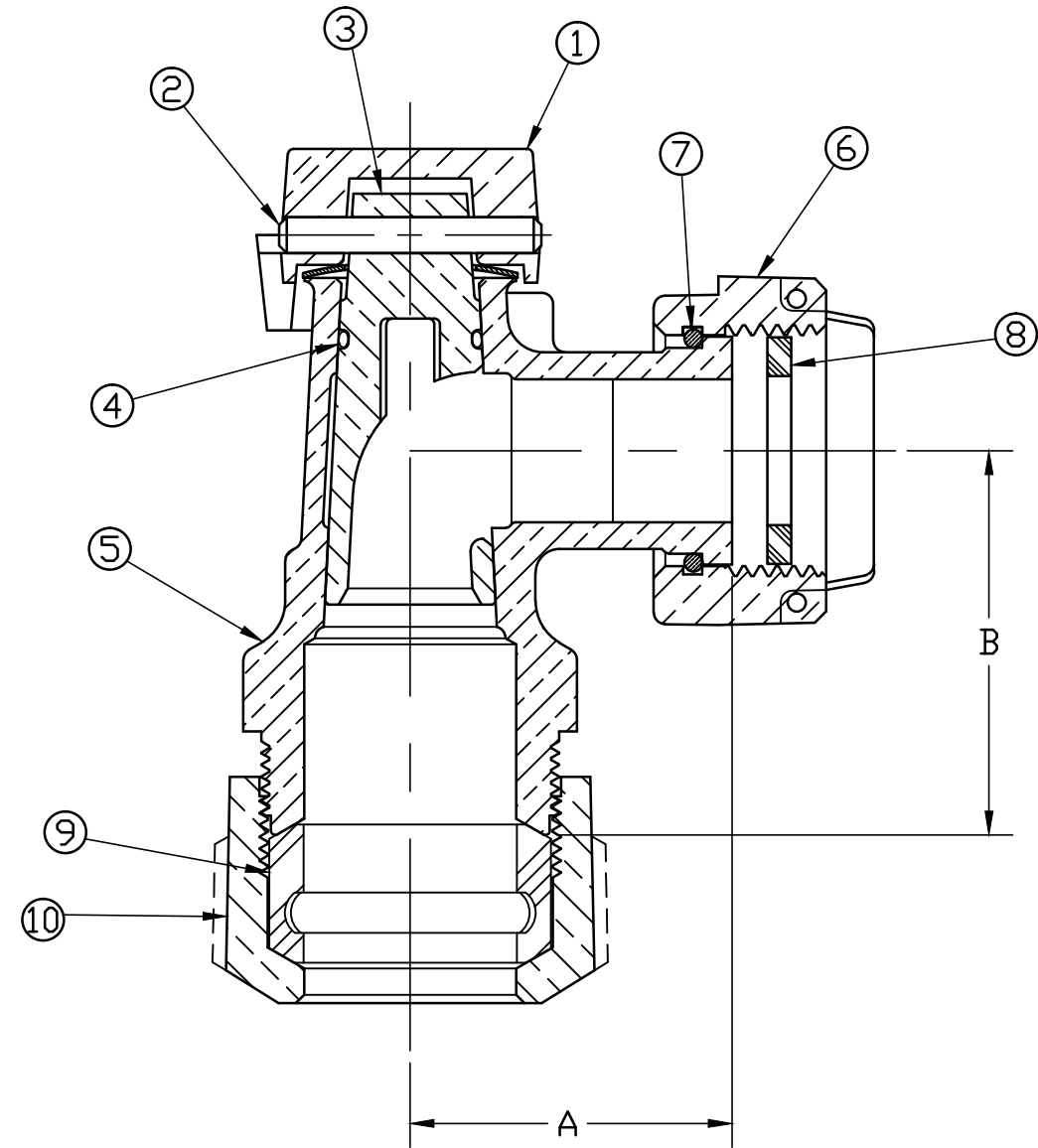


| No. | DESCRIPTION | MATERIAL |
|-----|---------------|----------------------------------|
| 1 | CAP | CAST BRASS ASTM B62 ALLOY C83600 |
| 2 | SOLID PIN | BRASS ASTM B16 ALLOY C36000 |
| 3 | STEM | CAST LOW LEAD BRASS ALLOY |
| 4 | O-RING | EPDM ASTM D2000 |
| 5 | BODY | CAST LOW LEAD BRASS ALLOY |
| 6 | SADDLE NUT | CAST BRASS ASTM B62 ALLOY C83600 |
| 7 | SNAP RING | PHOS BRONZE |
| 8 | RUBBER GASKET | NITRILE ASTM D2000 |
| 9 | PE GASKET | BUNA N ASTM D2000 |
| 10 | CONN NUT | CAST BRASS ASTM B62 ALLOY C83600 |



| SIZE | A | B |
|-----------------|------|------|
| 5/8 x 3/4 x 3/4 | 1.69 | 2.02 |
| 1 | 1.94 | 2.03 |

ALL WETTED PARTS ARE LOW LEAD BRASS ALLOY

FILEPATH: PROD-ENG\MUELLER\ASTSUBMITTALS\H14259N

| | | | | | | | | | | | |
|--|--|--|--|--|--|-------|-----|---------|----------------------------|-------------------------|------------|
| | | | | | | DRFTR | RWB | 1/14/15 | Mueller Co. | | |
| | | | | | | CHKR | | | | | |
| | | | | | | ENGR | | | | | |
| | | | | | | MGR | | | | | |
| | | | | | | | | | UNLESS OTHERWISE NOTED | THIRD ANGLE PROJECTION | |
| | | | | | | | | | SURFACE PREPARATION: | | |
| | | | | | | | | | BREAK CORNER(S) ----- .000 | | |
| | | | | | | | | | SURFACE FINISH -- XX RMS | REF. No. | SCALE |
| | | | | | | | | | TOLERANCE(S): | | NONE |
| | | | | | | | | | LINEAR ----- ± .000 | | |
| | | | | | | | | | ANGULAR ----- ± 0°00' | | |
| | | | | | | | | | STK No: | | |
| | | | | | | | | | MAT'L: | | |
| | | | | | | | | | DESCR. | ANGLE METER LLB VALVE | DWG NUMBER |
| | | | | | | | | | | (110 IPS x MTR) | H14259N |
| | | | | | | | | | PER EST NO: DXXXX | EST FIN WT = 0.0000 lbs | |

DWG NUMBER
H14259N
442-MRKTG

TITLE TO AND OWNERSHIP OF THIS ENGINEERING DATA REMAINS IN Mueller Co. NO USE IS TO BE MADE OF THIS DATA EXCEPT AS SPECIFICALLY AUTHORIZED BY Mueller Co. ASSENT ON THE PART OF THE RECIPIENT TO THESE CONDITIONS IS PRESUMED