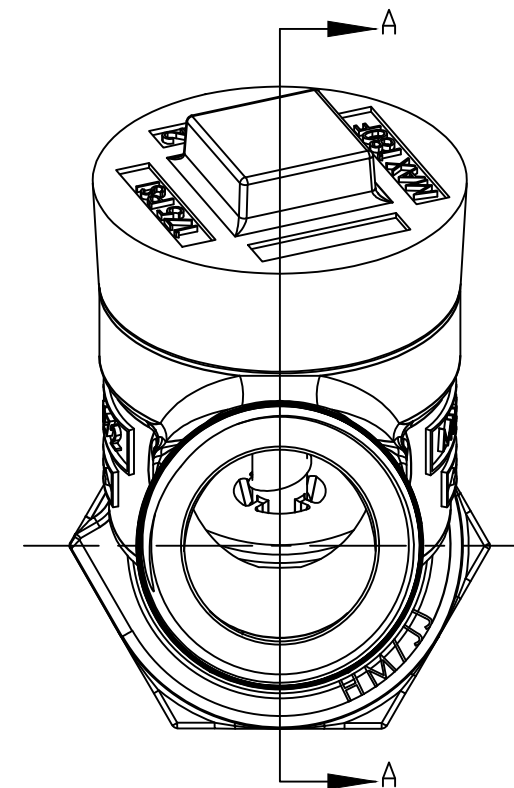
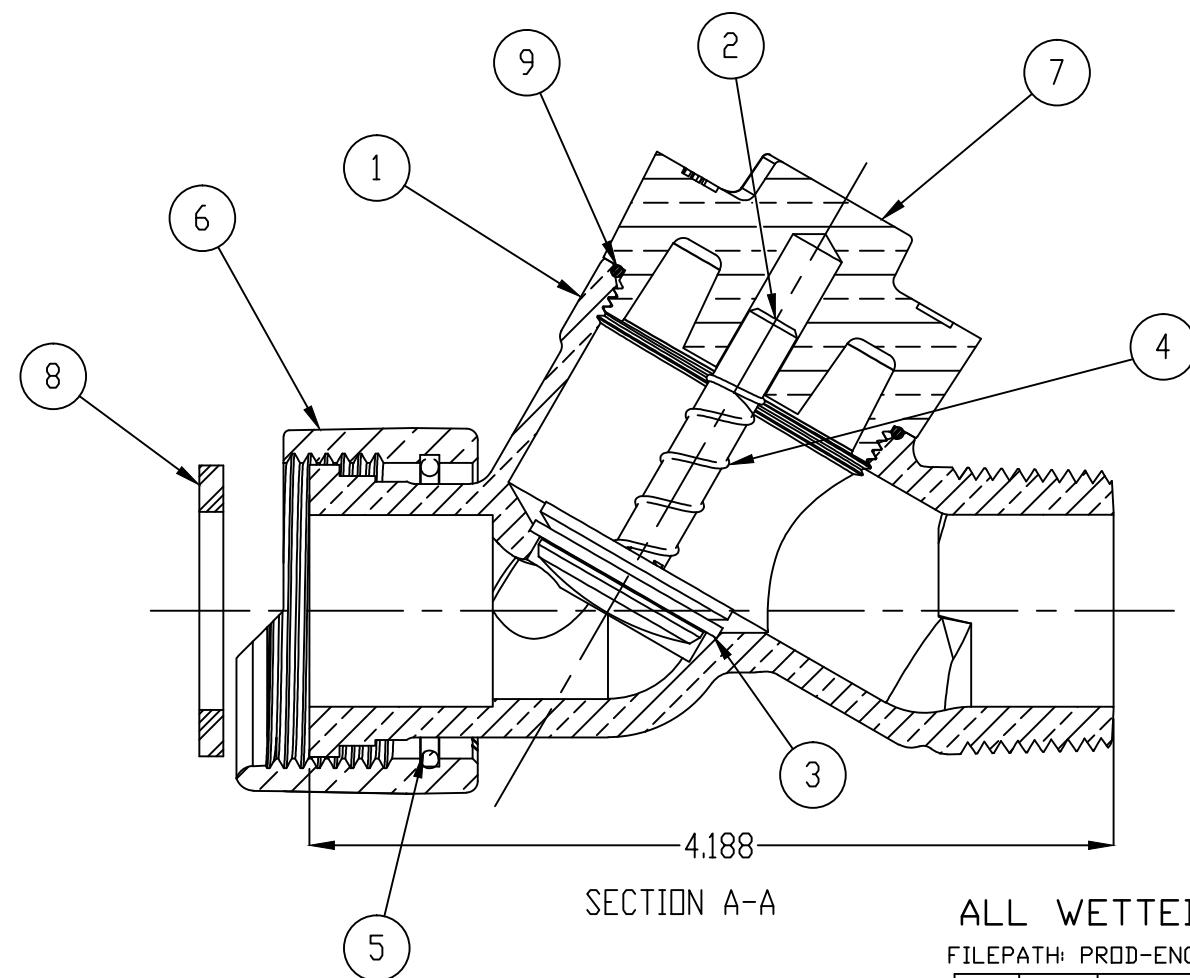
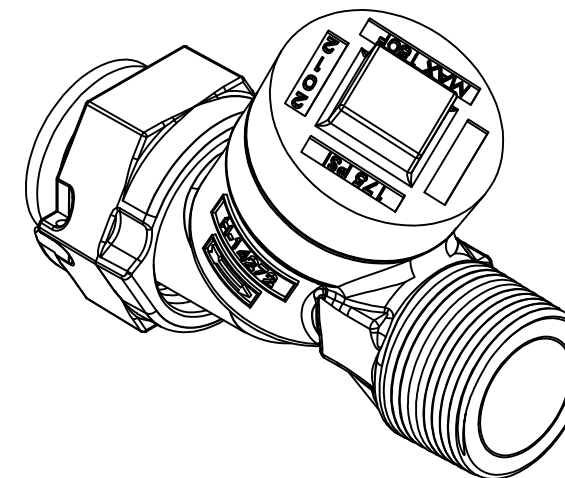


ITEM NO.	DESCRIPTION	MATERIAL
1	BODY	CAST LOW LEAD BRASS ALLOY
2	POPPET	CELCON GRADE M90-04
3	POPPET FACING	RUBBER ASTM D2000
4	SPRING	STAINLESS STEEL ASTM A313 TYPE 302
5	SNAP RING	BRASS ASTM B134 CDA 521
6	METER NUT	CAST BRASS ASTM B62 ALLOY C83600
7	1" SINGLE CHECK CAP	CAST LOW LEAD BRASS ALLOY
8	RUBBER GASKET	RUBBER ASTM D2000
9	O-RING	RUBBER ASTM D2000



ALL WETTED PARTS ARE LOW LEAD BRASS ALLOY

FILEPATH: PROD-ENG\MUELLER\APPROVED\SOLIDWORKS\H1427201N

REV	ECR	DESCRIPTION	DATE	BY	CHKR

DRFTR: RWB 7/28/14
 CHKR:
 ENGR:
 MGR:
 BY: DATE



UNLESS OTHERWISE NOTED
 SURFACE PREPARATION:
 BREAK CORNER(S) ---- .000
 SURFACE FINISH -- XX RMS
 TOLERANCE(S):
 LINEAR ----- ± .000
 ANGULAR ----- ± 0°00'

THIRD ANGLE PROJECTION

REF. No. SCALE
 FULL

TITLE TO AND OWNERSHIP OF THIS ENGINEERING
 DATA REMAINS IN Mueller Co. NO USE IS TO BE
 MADE OF THIS DATA EXCEPT AS SPECIFICALLY
 AUTHORIZED BY Mueller Co. ASSENT ON THE PART
 OF THE RECIPIENT TO THESE CONDITIONS IS PRESUMED

PER EST NO: DXXXX WEIGHT:

STK No:
 MAT'L:
 DESCR. 1" INLINE LLB CHECK VALVE ASSEMBLY

DWG NUMBER
 H1427201N

DWG NUMBER
 H1427201N
 80