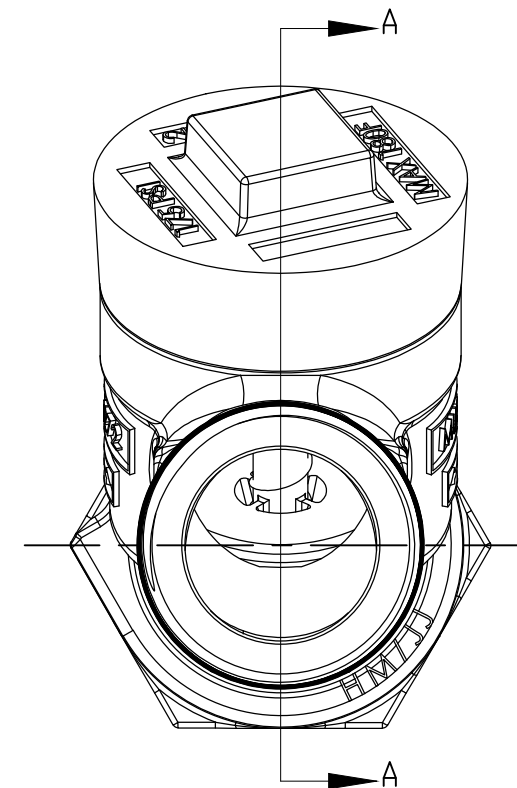
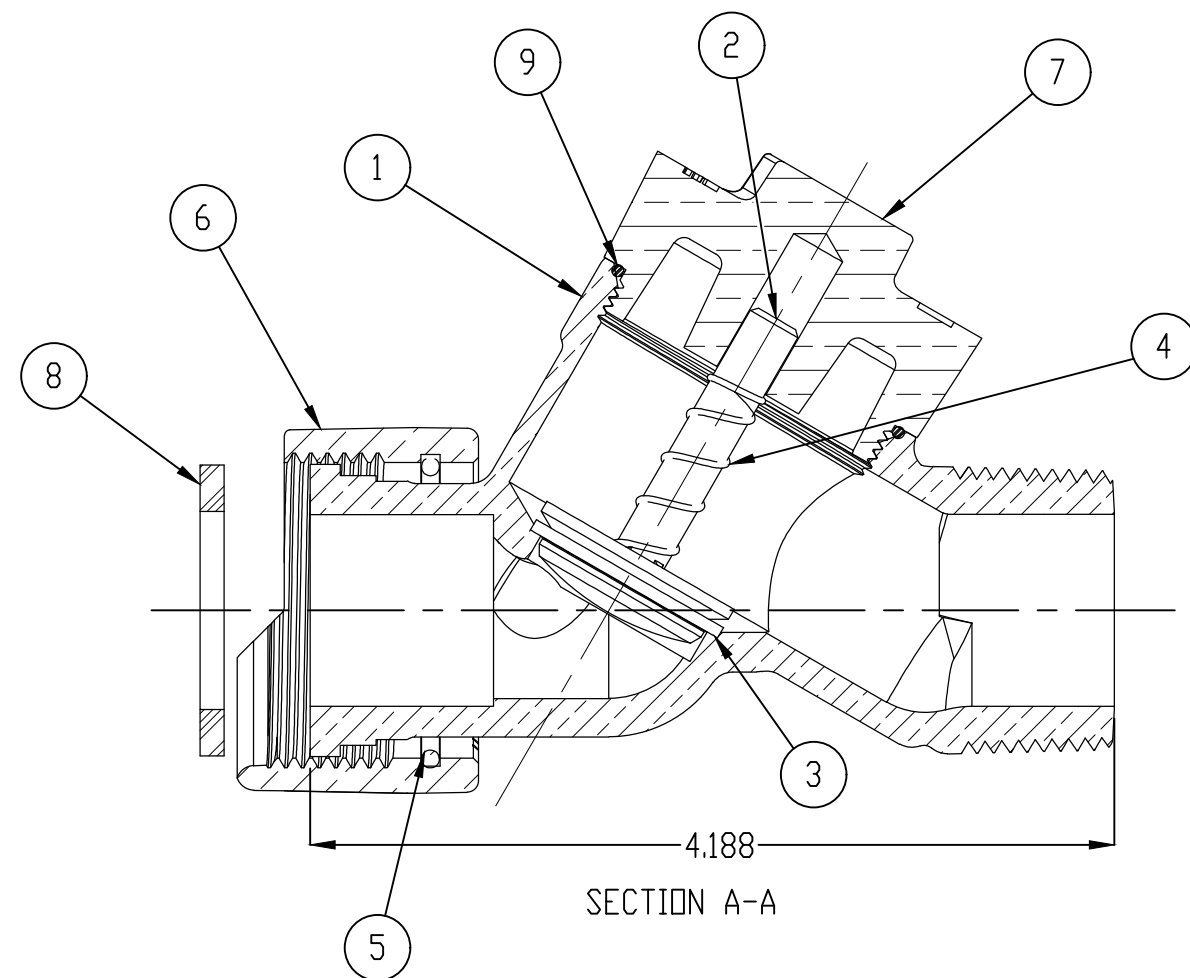
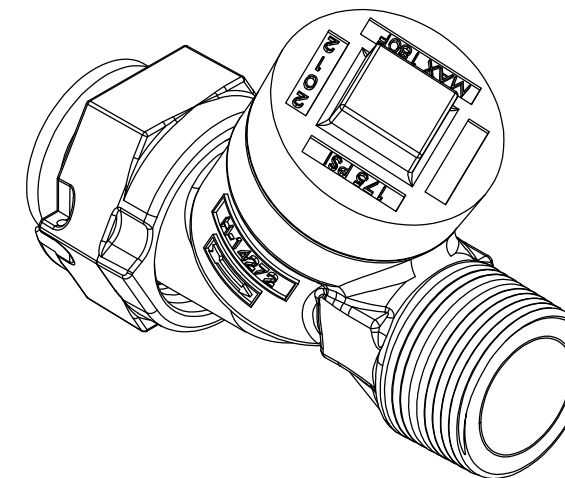


ITEM NO.	DESCRIPTION	MATERIAL
1	BODY	LEAD FREE BRASS ALLOY ASTM B584
2	POPPET	CELCON GRADE M90-04
3	POPPET FACING	RUBBER ASTM D2000
4	SPRING	STAINLESS STEEL ASTM A313 TYPE 302
5	SNAP RING	BRASS ASTM B134 CDA 521
6	METER NUT	CAST BRASS ALLOY ASTM B584
7	1" SINGLE CHECK CAP	LEAD FREE BRASS ALLOY ASTM B584
8	RUBBER GASKET	RUBBER ASTM D2000
9	O-RING	RUBBER ASTM D2000

SIZE	DIM "A"
5/8"x3/4"x3/4"	4.202
1"	4.188



MEETS ALL REQUIREMENTS OF AWWA C800
 ALL WETTED PARTS ARE LEAD FREE BRASS ALLOY C89833/C87850
 ALL NON WETTED PARTS ARE BRASS ALLOY C83600/C87850

DWG NUMBER
H1427201N

TITLE TO AND OWNERSHIP OF THIS ENGINEERING
 DATA REMAINS IN Mueller Co. NO USE IS TO BE
 MADE OF THIS DATA EXCEPT AS SPECIFICALLY
 AUTHORIZED BY Mueller Co. ASSENT ON THE PART
 OF THE RECIPIENT TO THESE CONDITIONS IS PRESUMED

DRFTR	AD	02/09/23	MUELLER	
CHKR				
ENGR			UNLESS OTHERWISE NOTED SURFACE PREPARATION: BREAK CORNER(S) ----- .000 SURFACE FINISH -- XX RMS TOLERANCE(S): LINEAR ----- ± .000 ANGULAR ----- ± 0°00'	THIRD ANGLE PROJECTION
MGR				REF. No.
	BY	DATE		FULL
STK No:				
MAT'L:				
DESCR.	INLINE CHECK VALVE ASSEMBLY		DWG NUMBER H1427201N	