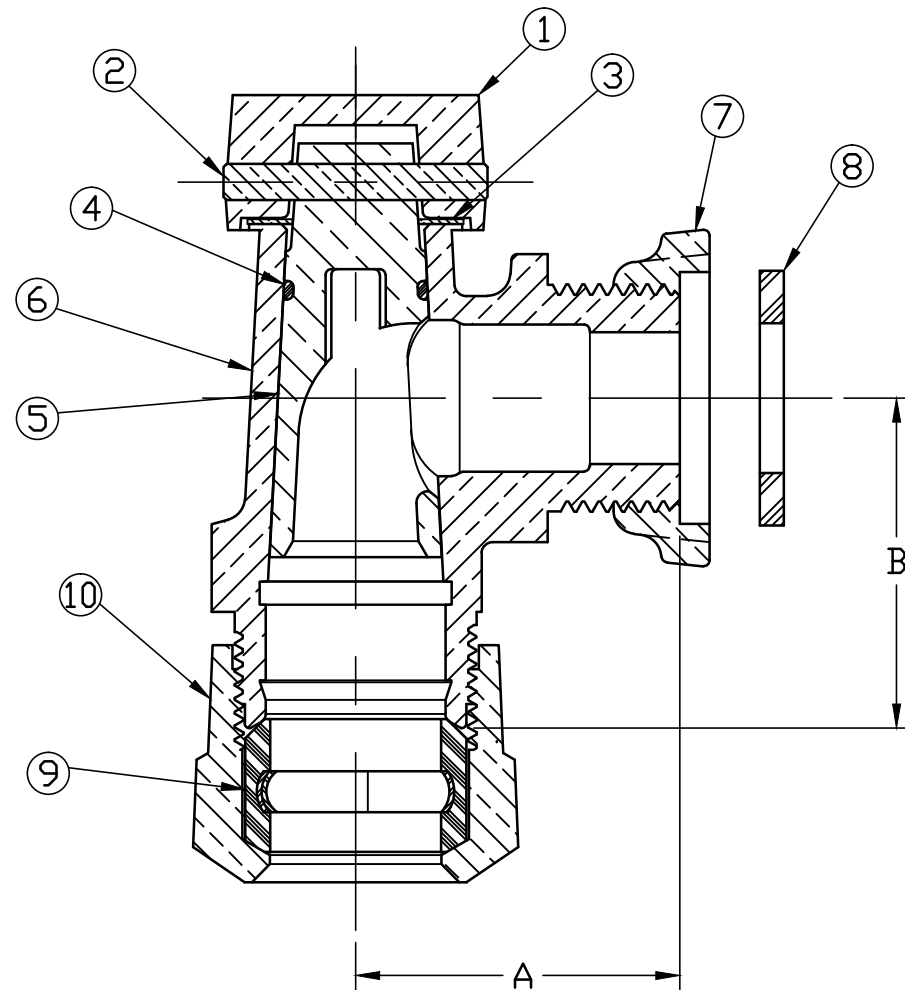


No.	DESCRIPTION	MATERIAL	No.	DESCRIPTION	MATERIAL
1	KEY CAP	CAST BRASS ASTM B62 ALLOY C83600	7	LOCK NUT	CAST BRASS ASTM B62 ALLOY C83600
2	PIN	BRASS ASTM B16 ALLOY C36000	8	RUBBER GASKET	NITRILE ASTM D2000
3	SPRING WASHER	PHOS BRONZE	9	GASKET	ASTM D2000 (SBR)&410 STAINLESS STL
4	O-RING	EPDM ASTM D2000	10	CONN NUT	CAST BRASS ASTM B62 ALLOY C83600
5	KEY	CAST LOW LEAD BRASS ALLOY			
6	BODY	CAST LOW LEAD BRASS ALLOY			

METER CONNX SIZE	A	B
5/8 x 3/4	1.69	1.72
5/8 x 3/4 x 3/4	1.69	1.72
5/8 x 3/4 1	1.69	1.97
1	2.06	3.66
1-1/4 x 1	2.06	3.69



NOTE: ALL WETTED PARTS ARE LOW LEAD BRASS ALLOY

FILEPATH: PROD-ENG\MUELLER\ASYSUBMITTALS\H14273N

						DRFTR	RWB	2/22/10			UNLESS OTHERWISE NOTED SURFACE PREPARATION: BREAK CORNER(S) ----- .000 SURFACE FINISH -- XX RMS TOLERANCE(S): LINEAR ----- ± .000 ANGULAR ----- ± 0°00'		THIRD ANGLE PROJECTION 			
															REF. No.	SCALE
																FULL
									BY	DATE						
									STK No:							
									MAT'L:							
									DESCR.		ANGLE METER STOP - LLB 110CTS x IRON BAR		DWG NUMBER	H14273N		
									PER EST NO: DXXXX		EST FIN WT = 0.0000 lbs					

DWG NUMBER  
H14273N  
442-MRKTG

TITLE TO AND OWNERSHIP OF THIS ENGINEERING DATA REMAINS IN Mueller Co. NO USE IS TO BE MADE OF THIS DATA EXCEPT AS SPECIFICALLY AUTHORIZED BY Mueller Co. ASSENT ON THE PART OF THE RECIPIENT TO THESE CONDITIONS IS PRESUMED