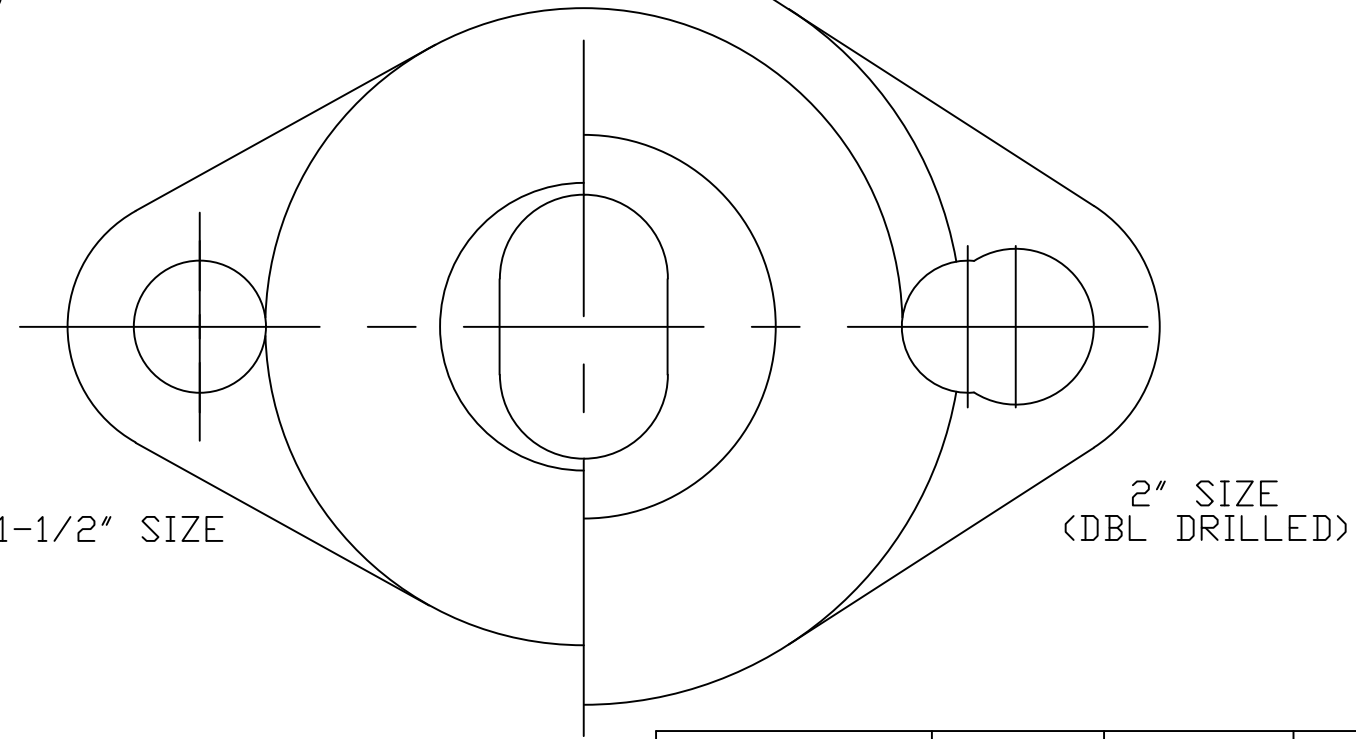


No.	DESCRIPTION	MATERIAL DESCRIPTION
1	BODY	CAST LOW LEAD BRASS ALLOY
2	O-RING	EP ASTM D2000
3	KEY	CAST LOW LEAD BRASS ALLOY
4	SPRING WASHER	ASTM A103 ALLOY C51000 PHOS BRONZE
5	CAP	CAST BRASS ASTM B62 ALLOY C83600
6	GROOVE PIN	ASTM B124 ALLOY 655 SILICON BRONZE
7	CONN. NUT	CAST BRASS ASTM B62 ALLOY C83600
8	CTS GSKT SUB	SBR D2000 - GSKT 410 _{SS} - BAND



VALVE SIZE	A	B	C	D
1-1/2	1.812"	3.219"	2.786	6.005
2	2.188"	3.199"	3.071	6.270

80 PSI MAX WP
 ALL WETTED PARTS ARE LOW LEAD BRASS ALLOY

FILEPATH: PROD-ENG\MUELLER\ASYSUBMITTALS\H14277N

DRFTR	JGarvin	10/11/10	MUELLER	UNLESS OTHERWISE NOTED SURFACE PREPARATION: BREAK CORNER(S) ---- .000 SURFACE FINISH -- XX RMS TOLERANCE(S): LINEAR ----- ± .000 ANGULAR ----- ± 0°00'	THIRD ANGLE PROJECTION	
CHKR					REF. No.	SCALE
ENGR						
MGR						
BY			DATE			
STK No:						
MAT'L:						
DESCR.			LLB ANGLE METER STOP VALVE (110 CTS × MTR FLANGE)		DWG NUMBER H14277N	
REV	ECR	DESCRIPTION	DATE	BY	CHKR	
PER EST NO: DXXXX EST FIN WT = 0.0000 lbs						

DWG NUMBER
 H14277N
 442-MRKTG

TITLE TO AND OWNERSHIP OF THIS ENGINEERING
 DATA REMAINS IN Mueller Co. NO USE IS TO BE
 MADE OF THIS DATA EXCEPT AS SPECIFICALLY
 AUTHORIZED BY Mueller Co. ASSENT ON THE PART
 OF THE RECIPIENT TO THESE CONDITIONS IS PRESUMED