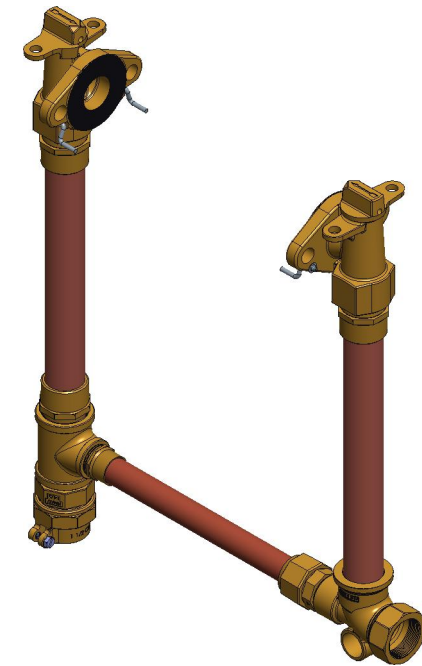
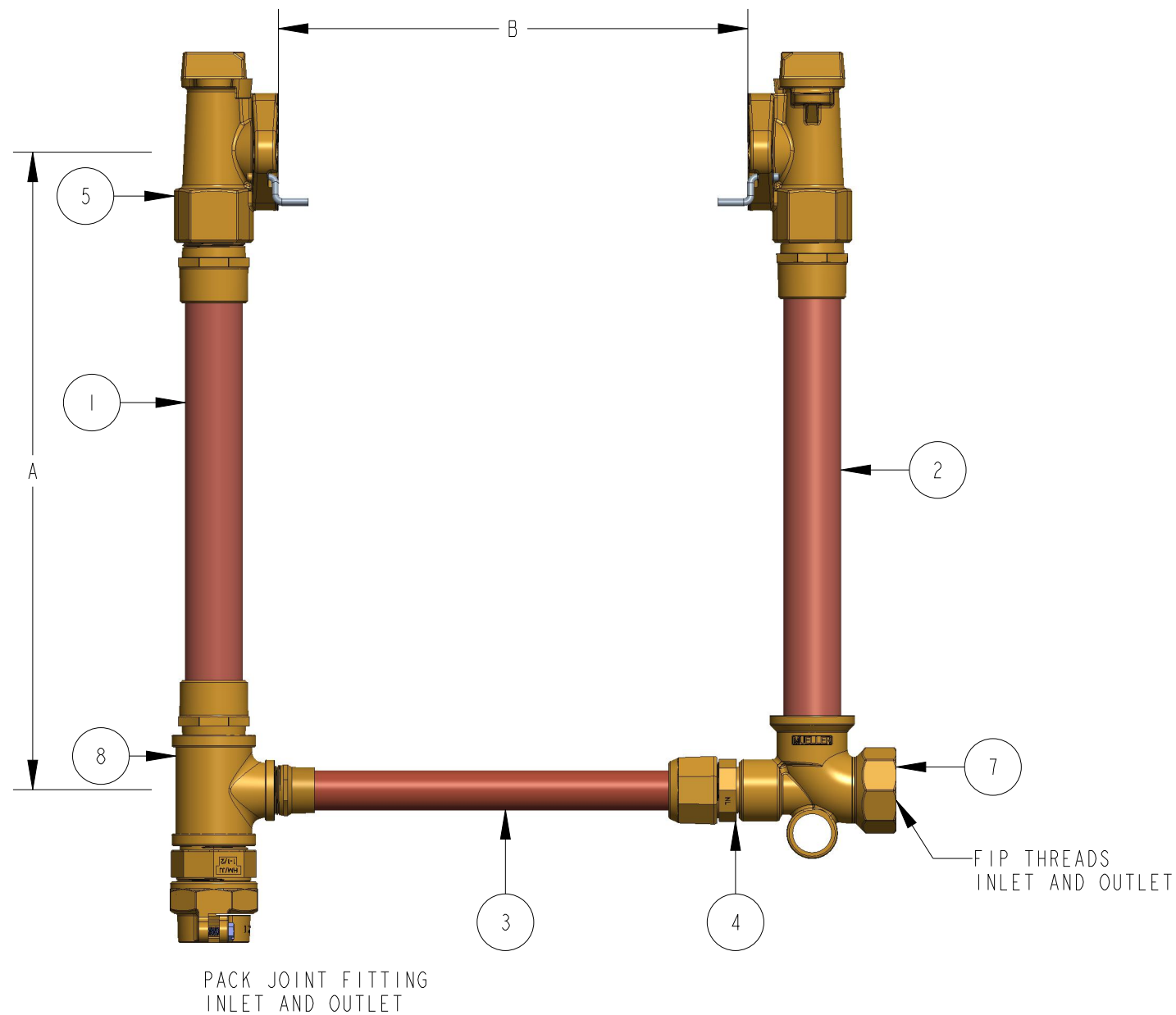


METER SIZE	1-1/2"	2"
A (MINIMUM)	13-1/4"	17-1/4"
B	12"	12"
TIE BAR SUB ASSEMBLY	282636E	680377E
MIP X CTS COMPRESSION TAILPIECE	330HI5428N	500HI5428N
ANGLE METER STOP	500HI42860IN	550HI42860IN
PACK JOINT X MIP TAILPIECE	500PI5428N	550PI5428N
90 DEGREE RISER TEE	55I416E	508448E
FIP THREADED TEE	790I87E	790I59E

ITEM NO	PART NUMBER	QTY	DESCRIPTION	MATERIAL
1		1	RISER SUB ASSEMBLY	RED BRASS ASTM B43 ALLOY C23000 HARD TEMPER
2		1	RISER SUB ASSEMBLY	RED BRASS ASTM B43 ALLOY C23000 HARD TEMPER
3		1	TIE BAR SUB ASSEMBLY	HARD COPPER TUBING UNS C12200 H80 TEMPER
4	HI5428N	1	MIP X CTS COMPRESSION TAILPIECE	LEAD FREE BRASS ALLOY ASTM B584 C89833/C87850
5	HI42860IN	2	ANGLE METER STOP	LEAD FREE BRASS ALLOY ASTM B584 C89833/C87850
6	PI5428N	1	PACK JOINT X MIP TAILPIECE	LEAD FREE BRASS ALLOY ASTM B584 C89833/C87850
7		1	90 DEGREE RISER TEE	LEAD FREE BRASS ALLOY ASTM B584 C89833/C87850
8		1	FIP THREADED TEE	CAST BRONZE ASTM B584 ALLOY C89833



OPTION CODE 15:

- *PACK JOINT FITTING ON INLET
- *ANGLE METER STOP ON INLET AND OUTLET

HI 428---15N

DR. BY	AOD	3/03/23	UNLESS OTHERWISE NOTED		THIRD ANGLE PROJECTION	C.B. NO.
CHKR			BREAK CAST CORNER(S)---			
ENGR			BREAK MACH CORNER(S)---			PURCH.
MGR			TOLERANCES		REF. NO.	PATT. NO.
MFG			UNLESS OTHERWISE NOTED		SCALE	
TOOL			LINEAR	ANGULAR	NONE	
FDRY			±	±	STK. NO.	
MAT'L:						
MUELLER		DESCR.	COPPER METER SETTER LEAD FREE BRASS		NUMBER	HI 428---15N