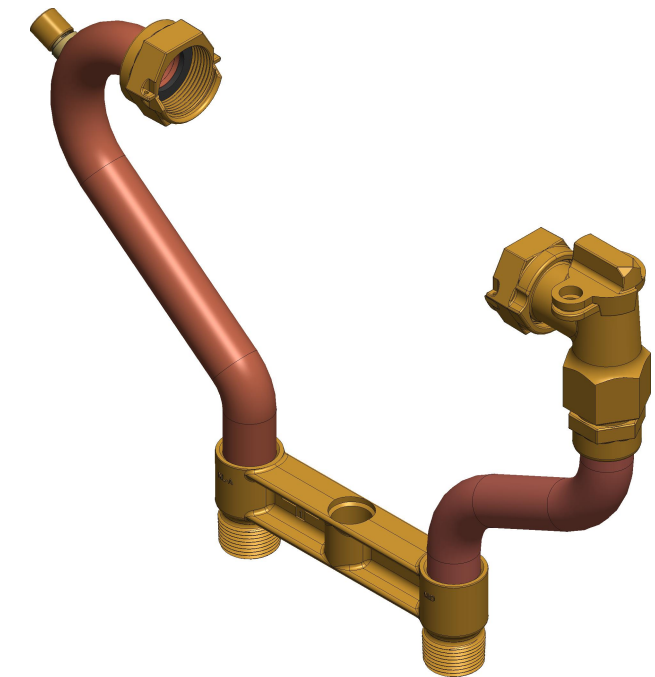
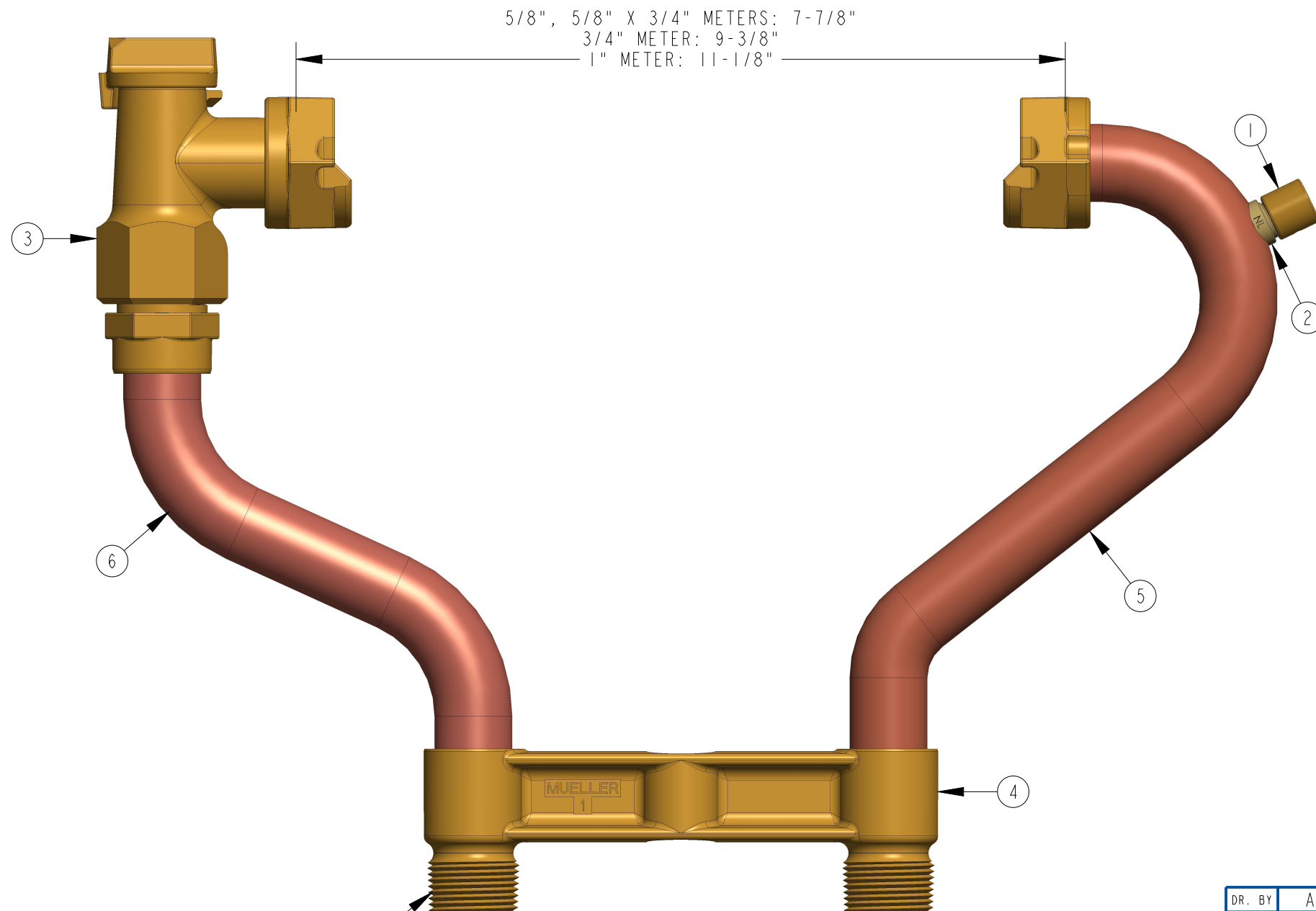


| ITEM NO | PART NUMBER | QTY | DESCRIPTION |
|---------|-------------|-----|--------------------------------------|
| 1 | | 1 | CAP |
| 2 | | 1 | TEST VALVE |
| 3 | HI4265 | 1 | ANGLE METER STOP VALVE |
| 4 | | 1 | H-1436 METER YOKE BAR LOW LEAD BRASS |
| 5 | | 1 | RISER SUB ASSEMBLY W/ SADDLE NUT |
| 6 | | 1 | RISER SUB ASSEMBLY |



MIP INLET AND OUTLET

| | | | | | |
|--------|-----|----------|---|------------------------|----------------|
| DR. BY | AOD | 12/21/21 | UNLESS OTHERWISE NOTED | THIRD ANGLE PROJECTION | C.B. NO. |
| CHKR | | | BREAK CAST CORNER(S)--- | | |
| ENGR | | | BREAK MACH CORNER(S)--- | PURCH. | FINISH |
| MGR | | | TOLERANCES | REF. NO. | PATT. NO. |
| MFG | | | UNLESS OTHERWISE NOTED | SCALE | |
| TOOL | | | LINEAR | ANGULAR | |
| FDRY | | | ± | ± | STK. NO. |
| MAT'L: | | | | | |
| | | DESCR. | COPPER YOKE SETTER WITH TEST VALVE LOW LEAD BRASS | NUMBER | 330H1441-----N |

330H1441-----N