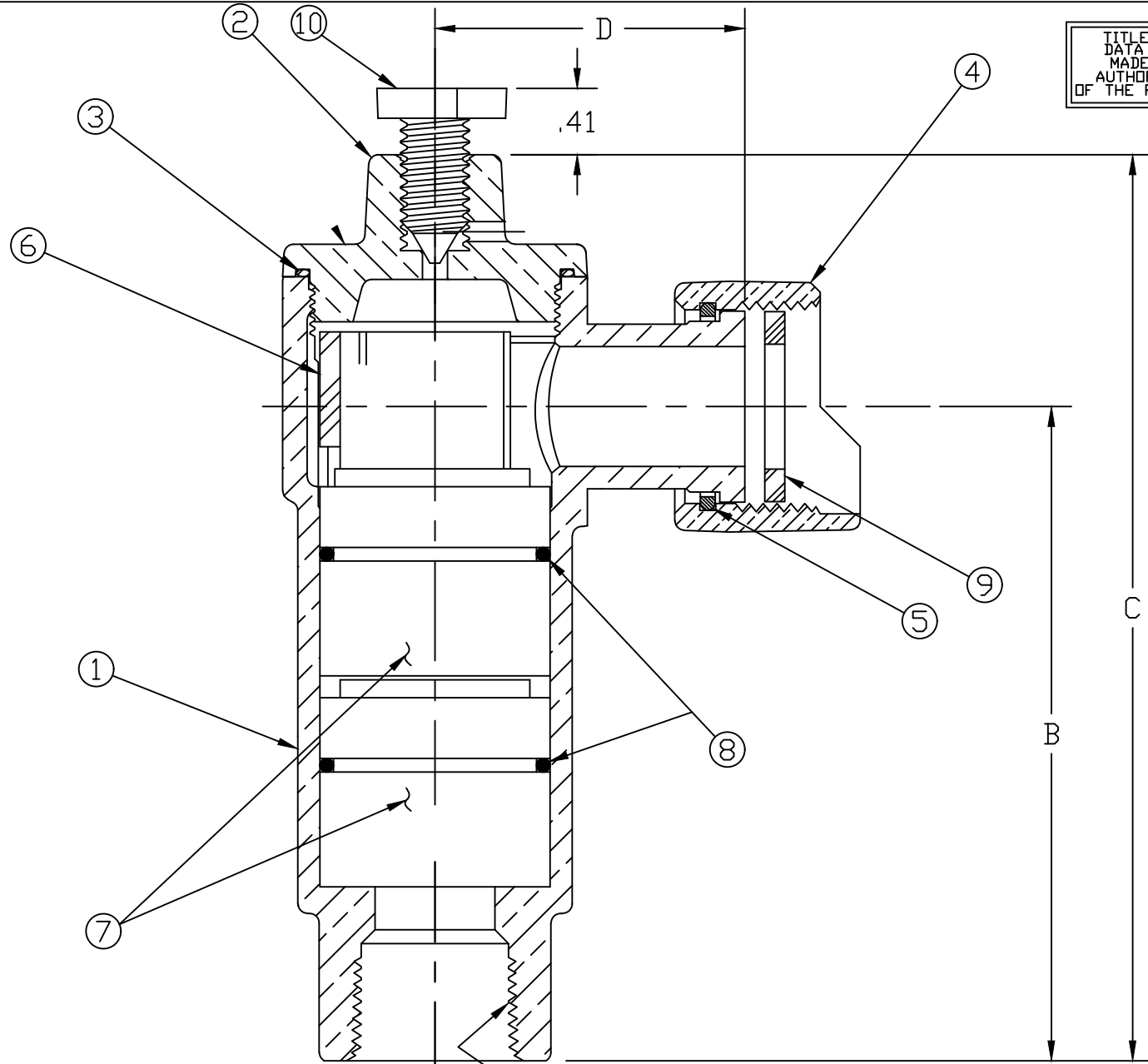
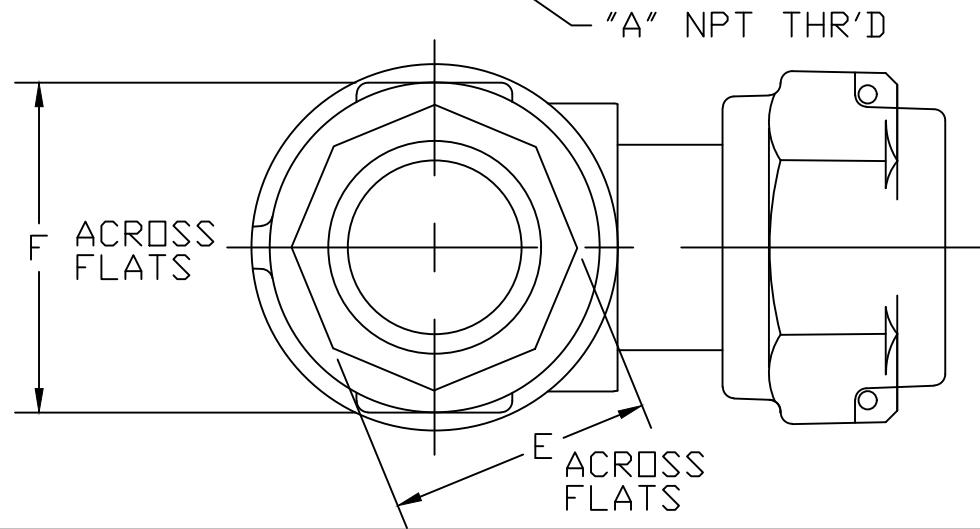


TITLE TO AND OWNERSHIP OF THIS ENGINEERING DATA REMAINS IN Mueller Co. NO USE IS TO BE MADE OF THIS DATA EXCEPT AS SPECIFICALLY AUTHORIZED BY Mueller Co. ASSENT ON THE PART OF THE RECIPIENT TO THESE CONDITIONS IS PRESUMED



NO.	DESCRIPTION	MATERIAL
1	BODY	CAST NO LEAD BRASS ALLOY
2	CAP	CAST NO LEAD BRASS ALLOY
3	O-RING	EPDM D2000
4	SADDLE NUT	CAST BRASS ASTM B62 ALLOY C83600
5	SNAP RING	COPPER ALLOY CDA 521
6	LINER	CELCON M-90
7	POPPET ASS'Y	CELCON M270-GSKT EPDM ASTM D2000-SPRING 302 SS WIRE
8	O-RING	EPDM D2000
9	WASHER	NITRILE D2000
10	DRAIN PIN	CAST NO LEAD BRASS ALLOY

SIZE	"A" NPT THR'D	B	C	D	E	F
5/8x3/4	3/4-14 NPT.	4.09	5.67	1.94	1.38	1.72
5/8x3/4x3/4	3/4-14 NPT.	4.09	5.67	1.94	1.38	1.72
1	1-11 1/2 NPT.	4.51	6.45	2.35	1.69	2.28



ALL WETTED PARTS ARE NO LEAD BRASS ALLOY

FILEPATH: PROD-ENG\MUELLER\ASYSUBMITTALS\H1446005AN

DRFTR	JGarvin	6/21/12	MUELLER		
CHKR					
ENGR					
MGR					
UNLESS OTHERWISE NOTED			THIRD ANGLE PROJECTION		
SURFACE PREPARATION:			REF. No. SCALE		
BREAK CORNER(S) ---- .000					
SURFACE FINISH -- XX RMS			NONE		
TOLERANCE(S):					
LINEAR ----- ± .000					
ANGULAR ----- ± 0°00'					
STK No:					
MAT'L:					
DESCR.			DUAL CHECK NLB ANGLE METER		
			VALVE ASSEMBLY ASSE APPROVED		
			(MTR x FIP) w/ TEST VALVE		
DWG NUMBER			H1446005AN		
REV	ECR	DESCRIPTION	DATE	BY	CHKR
PER	EST	NO:	DXXXX	EST	FIN
WT = 0.0000 lbs					

DWG NUMBER
H1446005AN