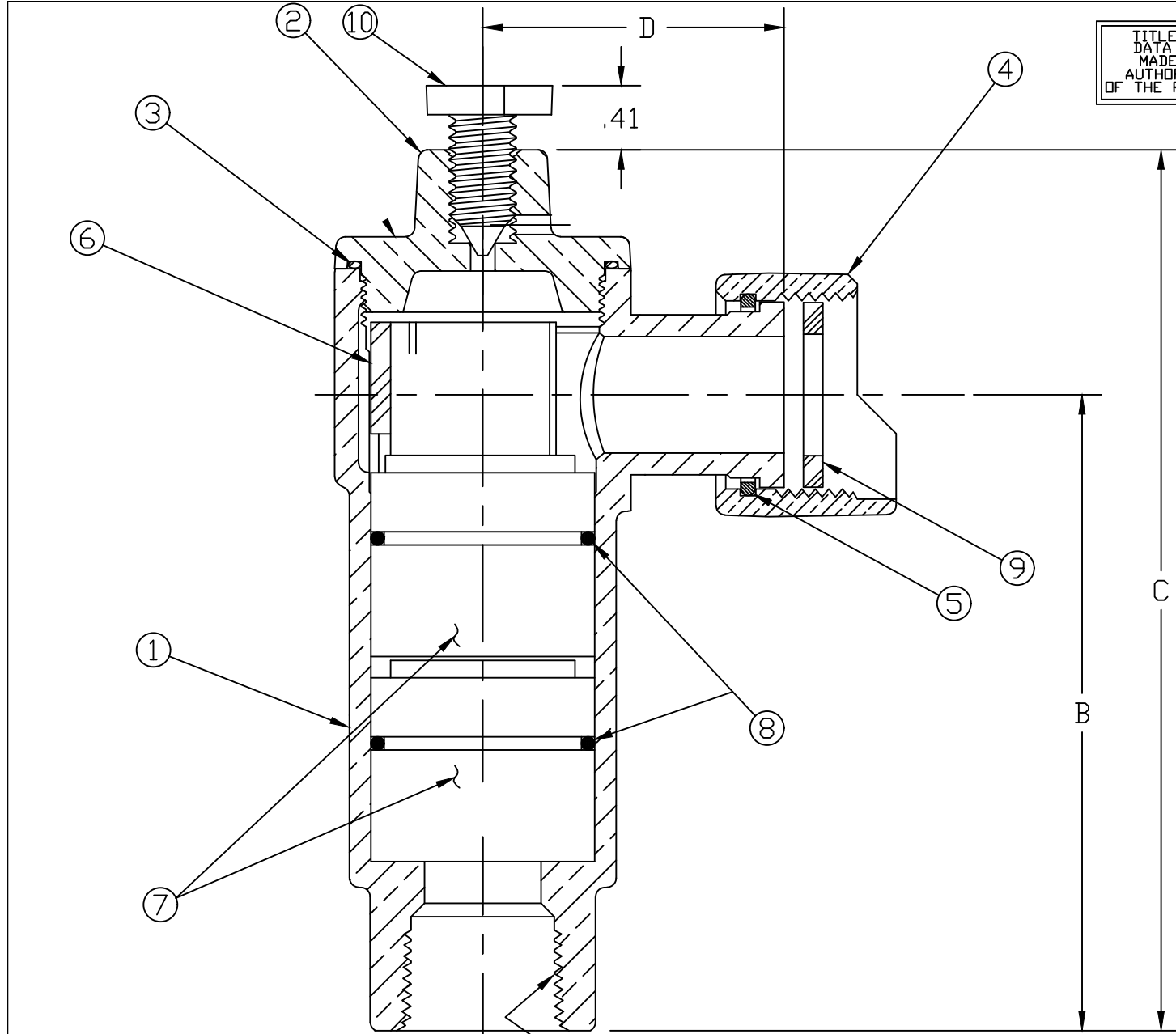


TITLE TO AND OWNERSHIP OF THIS ENGINEERING DATA REMAINS IN Mueller Co. NO USE IS TO BE MADE OF THIS DATA EXCEPT AS SPECIFICALLY AUTHORIZED BY Mueller Co. ASSENT ON THE PART OF THE RECIPIENT TO THESE CONDITIONS IS PRESUMED

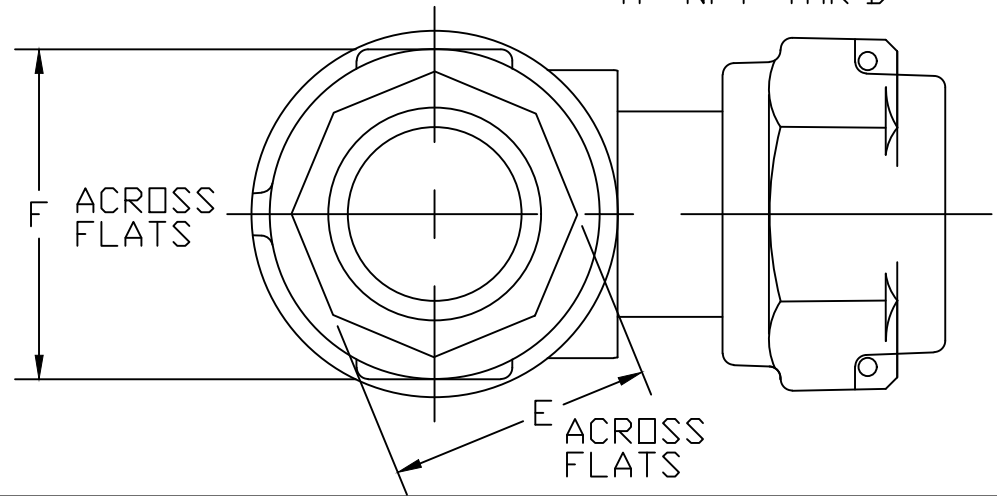
NO.	DESCRIPTION	MATERIAL
1	BODY	LEAD FREE BRASS ALLOY ASTM B584
2	CAP	LEAD FREE BRASS ALLOY ASTM B584
3	O-RING	EPDM D2000
4	SADDLE NUT	CAST BRASS ALLOY ASTM B584
5	SNAP RING	COPPER ALLOY CDA 521
6	LINER	CELCON M-90
7	POPPET ASS'Y	CELCON M270-GSKT EPDM ASTM D2000-SPRING 302 SS WIRE
8	O-RING	EPDM D2000
9	WASHER	NITRILE D2000
10	DRAIN PIN	LEAD FREE BRASS ALLOY ASTM B584



SIZE	"A" NPT THR'D	B	C	D	E	F
5/8x3/4	3/4-14 NPT.	4.09	5.67	1.94	1.38	1.72
5/8x3/4x3/4	3/4-14 NPT.	4.09	5.67	1.94	1.38	1.72
1	1-11 1/2 NPT.	4.51	6.45	2.35	1.69	2.28

MEETS ALL REQUIREMENTS OF AWWA C800
 ALL WETTED PARTS ARE LEAD FREE BRASS ALLOY C89833/C87850
 ALL NON WETTED PARTS ARE BRASS ALLOY C83600/C87850

DWG NUMBER
H1446005AN



DRFTR	AD	02/09/23	MUELLER		
CHKR					
ENGR			UNLESS OTHERWISE NOTED SURFACE PREPARATION: BREAK CORNER(S) ---- .000 SURFACE FINISH -- XX RMS	THIRD ANGLE PROJECTION	
MGR				REF. No.	SCALE
	BY	DATE	LINEAR ----- ± .000		NONE
			ANGULAR ----- ± 0°00'		
STK No:			MAT'L:		
DESCR.			DWG NUMBER		
DUAL CHECK ANGLE METER VALVE ASSEMBLY ASSE APPROVED (MTR x FIP) w/ TEST VALVE			H1446005AN		