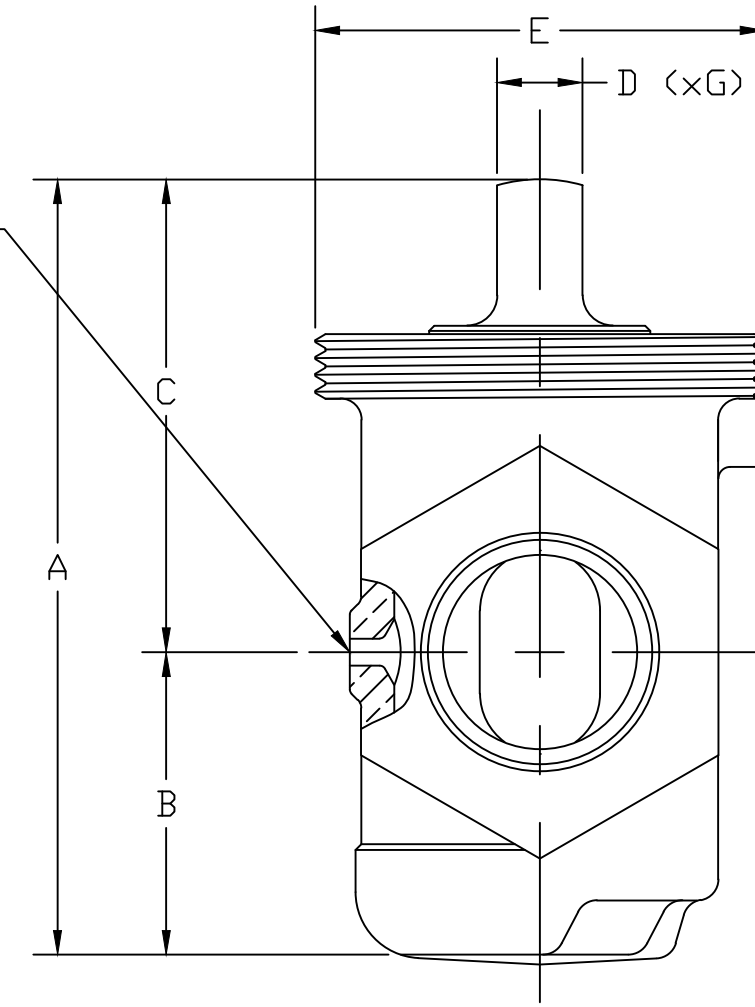
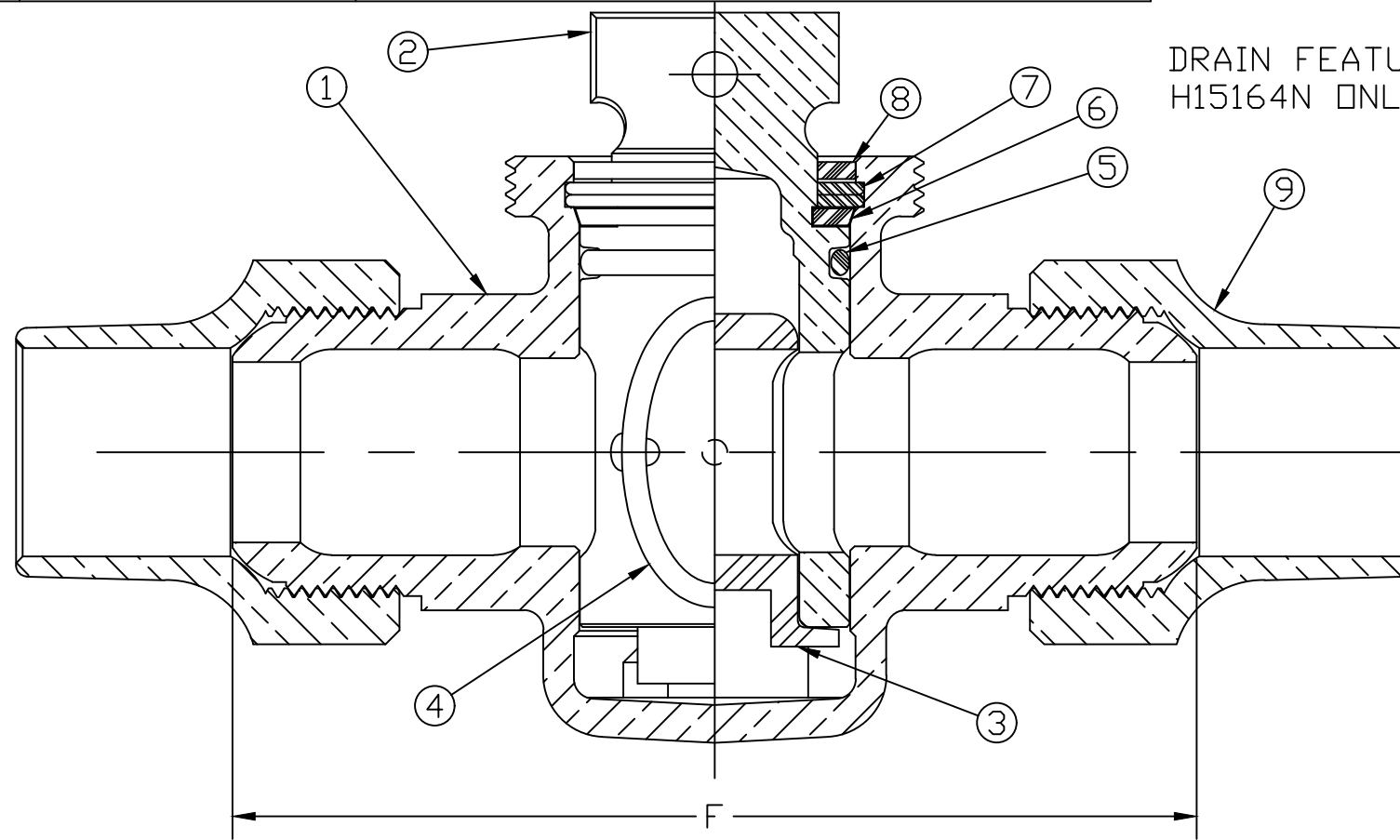


No.	DESCRIPTION	MATERIAL
1	BODY	LEAD FREE BRASS ALLOY ASTM B584
2	KEY	LEAD FREE BRASS ALLOY ASTM B584
3	KEY INSERT	CYCOLACL ASTM D1788-62T TYPE 1 GR 1
4	PORT O-RING	RUBBER
5	TOP O-RING	RUBBER
6	THRUST WASHER	CELCON GRADE M90-04
7	RETAINING RING	PHOSPHOR BRONZE ASTM B103
8	TOP SEAL	RUBBER
9	COUPLING NUT	CAST BRASS ALLOY ASTM B584

SIZE	A	B	C	D	E	F	G
3/4"	3.45	1.34	2.11	.44	1.848-11 1/2	4.56	1.12
1"	4.00	1.56	2.44	.50	2.316-11 1/2	5.34	1.38
1 1/4"	4.38	1.73	2.64	.53	2.798-8	6.59	1.62
1 1/2"	5.51	2.09	3.42	.53	3.401-8	7.16	1.88
2"	6.05	2.34	3.70	.56	3.893-8	8.84	2.00



DRAIN	NO	YES
DWG NUMBER	H-15154N	H-15164N

MEETS ALL REQUIREMENTS OF AWWA C800  
 ALL WETTED PARTS ARE LEAD FREE BRASS ALLOY C89833/C87850  
 ALL NON WETTED PARTS ARE BRASS ALLOY C83600/C87850

TITLE TO AND OWNERSHIP OF THIS ENGINEERING DATA REMAINS IN Mueller Co. NO USE IS TO BE MADE OF THIS DATA EXCEPT AS SPECIFICALLY AUTHORIZED BY Mueller Co. ASSENT ON THE PART OF THE RECIPIENT TO THESE CONDITIONS IS PRESUMED

DRFTR	AD	02/08/23	<b>MUELLER</b>	
CHKR				
ENGR			UNLESS OTHERWISE NOTED SURFACE PREPARATION: BREAK CORNER(S) ---- .000 SURFACE FINISH -- XX RMS	THIRD ANGLE PROJECTION
MGR				REF. No.
	BY	DATE	LINEAR ----- ± .000	FULL
			ANGULAR ----- ± 0°00'	
STK No:			DESCR. MARK II ORISEAL VALVE CS x CS	
MAT'L:			DWG NUMBER H15154N	