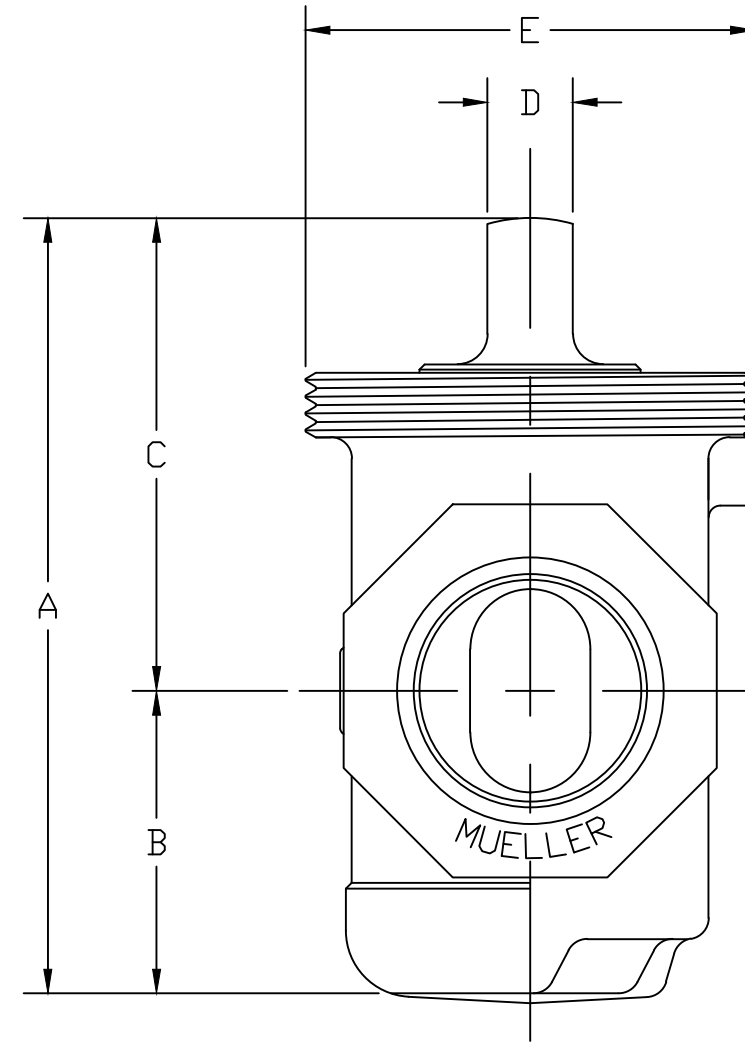
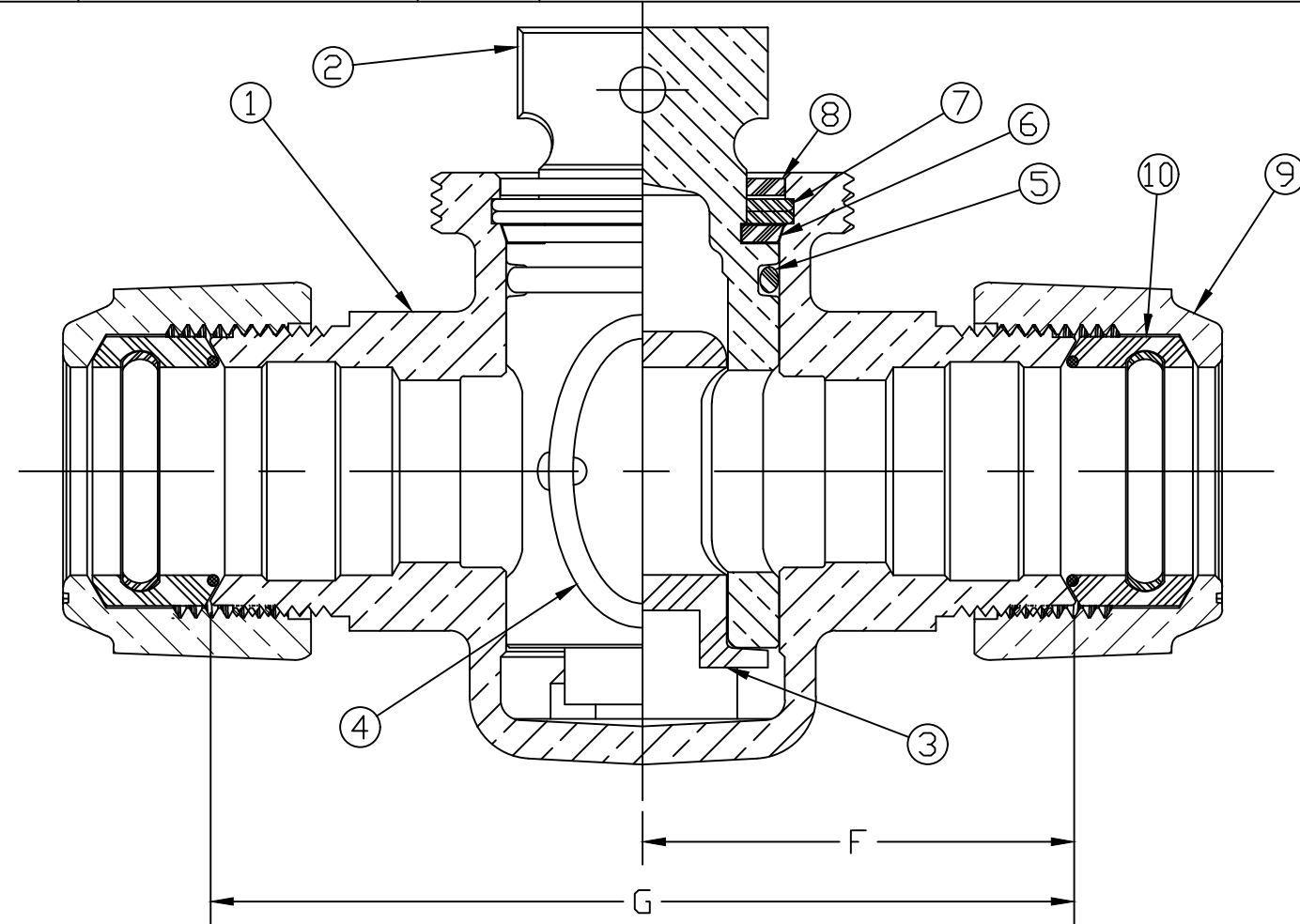


No.	DESCRIPTION	REQ'D	MATERIAL
1	BODY	1	LEAD FREE BRASS ALLOY ASTM B584
2	KEY	1	LEAD FREE BRASS ALLOY ASTM B584
3	KEY INSERT	1	CYCOLACL ASTM D1788-62T TYPE 1 GR 1
4	PORT O-RING	1	RUBBER
5	TOP O-RING	1	RUBBER
6	THRUST WASHER	1	CELCON GRADE M90-04
7	RETAINING RING	2	PHOSPHOR BRONZE ASTM B103
8	TOP SEAL	1	RUBBER
9	COUPLING NUT	2	CAST BRASS ALLOY ASTM B584
10	GASKET SEAL GRIPPER BAND ASS'Y	2	410 STAINLESS STEEL, RUBBER

SIZE	A	B	C	D	E	F	G
3/4"	3.47	1.34	2.12	.44	1.848-11 1/2	2.12	4.25
1"	4.25	1.56	2.56	.50	2.316-11 1/2	2.38	4.75



MEETS ALL REQUIREMENTS OF AWWA C800
 ALL WETTED PARTS ARE LEAD FREE BRASS ALLOY C89833/C87850
 ALL NON WETTED PARTS ARE BRASS ALLOY C83600/C87850

DWG NUMBER
H15155N

TITLE TO AND OWNERSHIP OF THIS ENGINEERING
 DATA REMAINS IN Mueller Co. NO USE IS TO BE
 MADE OF THIS DATA EXCEPT AS SPECIFICALLY
 AUTHORIZED BY Mueller Co. ASSENT ON THE PART
 OF THE RECIPIENT TO THESE CONDITIONS IS PRESUMED

DRFTR	AD	02/07/23	MUELLER	
CHKR				
ENGR			UNLESS OTHERWISE NOTED	THIRD ANGLE PROJECTION
MGR				SURFACE PREPARATION: BREAK CORNER(S) ---- .000 SURFACE FINISH -- 000 RMS
	BY	DATE	TOLERANCE(S): LINEAR ----- ± .000 ANGULAR ----- ± 0°00'	SCALE
STK No:				FULL
MAT'L:				
DESCR.	MARK II DRISEAL ASS'Y			DWG NUMBER
				H15155N