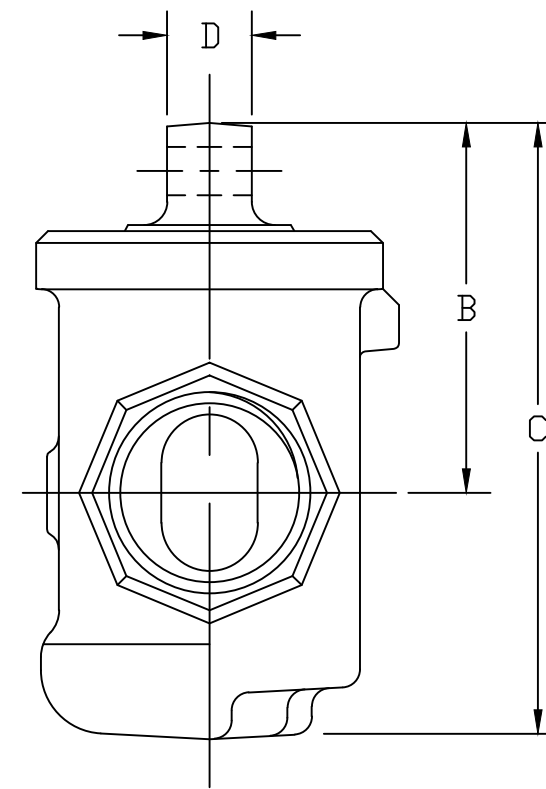
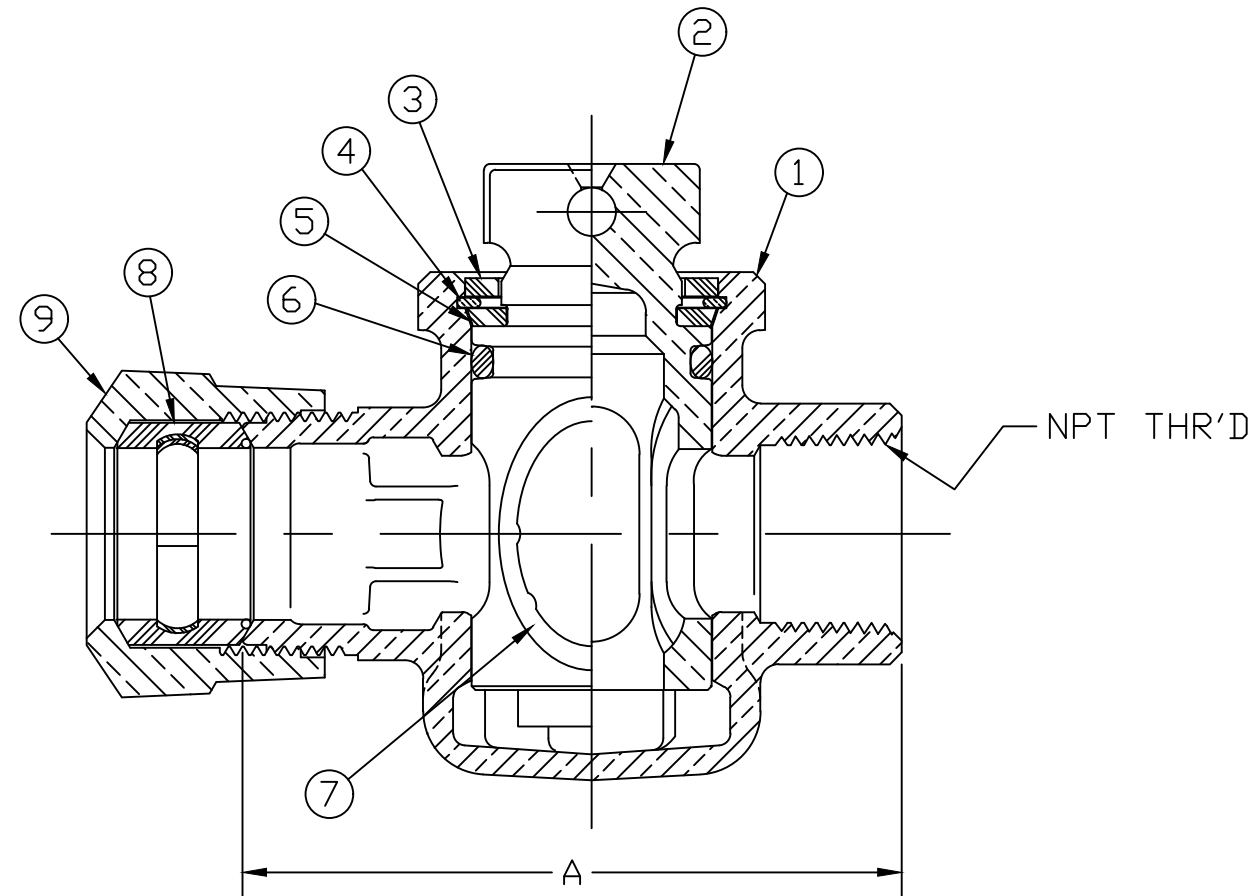


SIZE	A	B	C	D	NPT
3/4	3.42	1.92	3.17	.44	3/4"
1	4.36	2.44	4.00	.44	1"
1-1/2	6.11	3.42	5.51	.53	1-1/2"
2	6.56	3.70	6.04	.56	2"

No.	DESCRIPTION	MATERIAL
1	BODY	CAST LOW LEAD BRASS ALLOY
2	KEY	CAST LOW LEAD BRASS ALLOY
3	TOP SEAL	RUBBER, MUELLER RUBBER CODE R8
4	RETAINING RING	BRONZE ASTM B103 ALLOY C52100
5	THRUST WASHER	CELCON GRADE M90 CF2001
6	TOP O-RING	RUBBER, ASTM D-2000 (EPDM)
7	PORT O-RING	RUBBER, ASTM D-2000 (EPDM)
8	CTS GSKT SUB	SBR D2000 - GSKT 410ss - BAND
9	CONN. NUT	CAST BRASS ASTM B62 ALLOY C83600



FILEPATH: PROD-ENG\MUELLER\APPROVED\H15172N

DRFTR	RWB	2/5/10	MUELLER		
CHKR					
ENGR					
MGR					
			UNLESS OTHERWISE NOTED	THIRD ANGLE PROJECTION	
			SURFACE PREPARATION:		
			BREAK CORNER(S) ---- .000		
			SURFACE FINISH -- XX RMS	REF. No.	
			TOLERANCE(S):	SCALE	
			LINEAR ----- ± .016	FULL	
			ANGULAR ----- ± 0°30'		
			BY	DATE	
			STK No:		
			MAT'L:		
			DESCR.		
			LLB MARK II ORISEAL (PHASE III)	DWG NUMBER	
			CTS 110 x FIP	H15172N	
REV	ECR	DESCRIPTION	DATE	BY	CHKR
PER EST NO: DXXXX EST FIN WT = 0.0000 lbs					

TITLE TO AND OWNERSHIP OF THIS ENGINEERING DATA REMAINS IN Mueller Co. NO USE IS TO BE MADE OF THIS DATA EXCEPT AS SPECIFICALLY AUTHORIZED BY Mueller Co. ASSENT ON THE PART OF THE RECIPIENT TO THESE CONDITIONS IS PRESUMED

WAS EXP NO:

DWG NUMBER
H15172N

44-MRKT