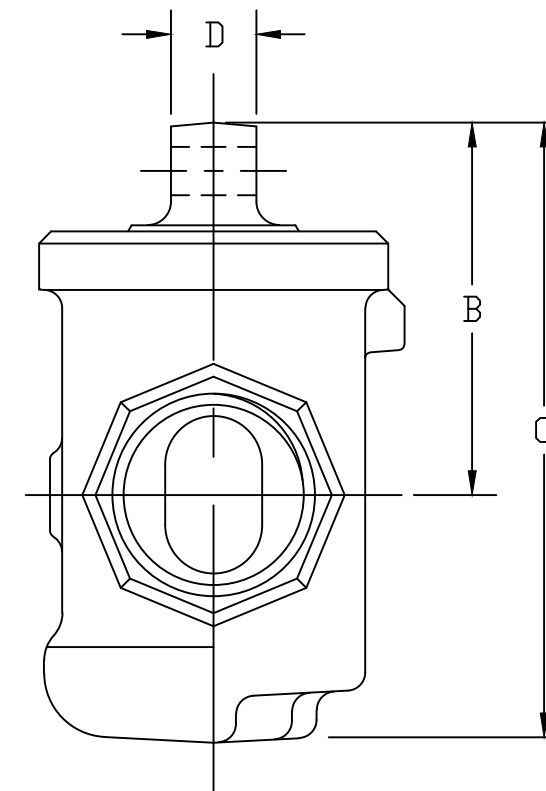
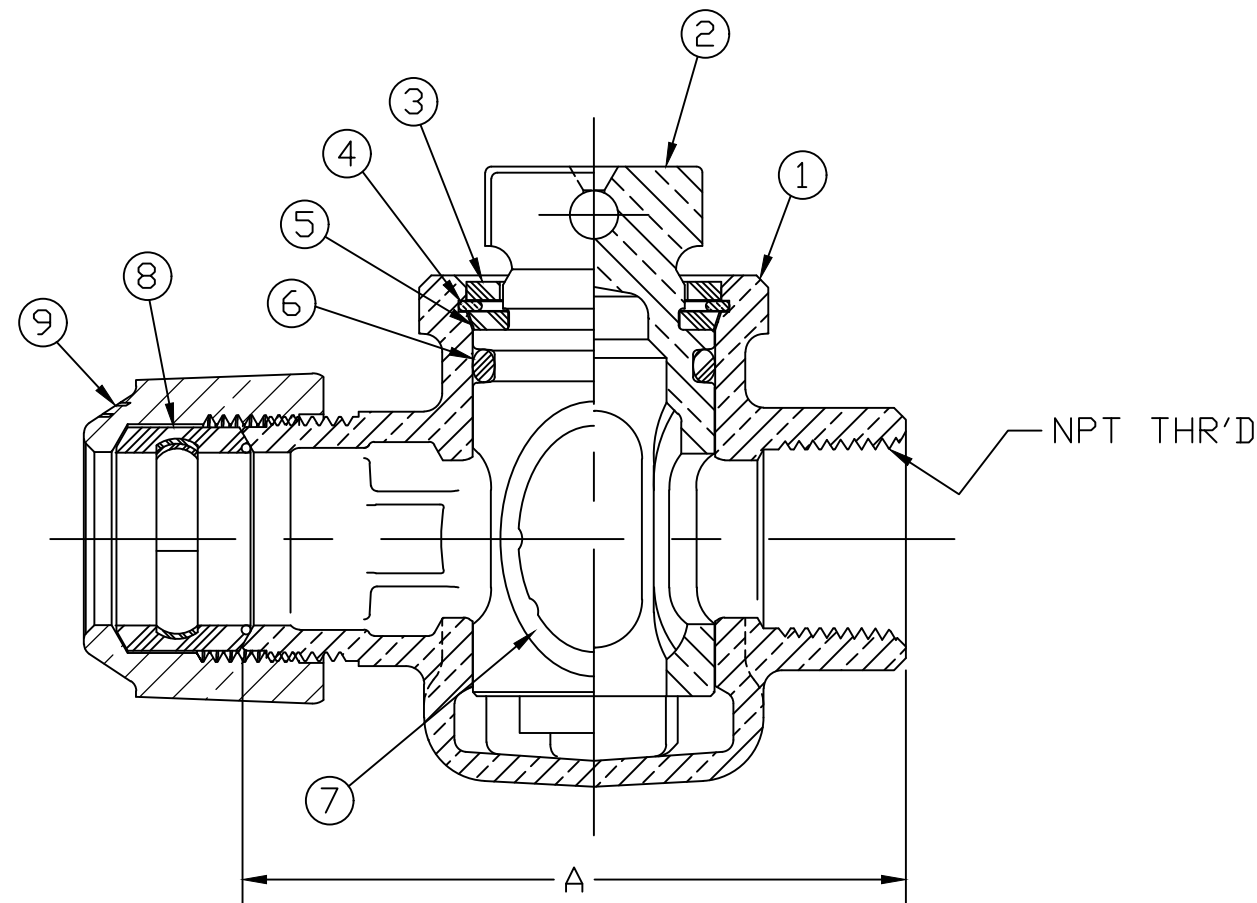


SIZE	A	B	C	D	NPT
3/4	3.42	1.92	3.17	.44	3/4"
1	4.36	2.44	4.00	.44	1"
1-1/2	6.11	3.42	5.51	.53	1-1/2"
2	6.56	3.70	6.04	.56	2"

No.	DESCRIPTION	MATERIAL
1	BODY	LEAD FREE BRASS ALLOY ASTM B584
2	KEY	LEAD FREE BRASS ALLOY ASTM B584
3	TOP SEAL	RUBBER, MUELLER RUBBER CODE R8
4	RETAINING RING	BRONZE ASTM B103 ALLOY C52100
5	THRUST WASHER	CELCON GRADE M90 CF2001
6	TOP O-RING	RUBBER, ASTM D-2000 (EPDM)
7	PORT O-RING	RUBBER, ASTM D-2000 (EPDM)
8	CTS GSKT SUB	SBR D2000 - GSKT 410ss - BAND
9	CONN. NUT	CAST BRASS ALLOY ASTM B584



MEETS ALL REQUIREMENTS OF AWWA C800
 ALL WETTED PARTS ARE LEAD FREE BRASS ALLOY C89833/C87850
 ALL NON WETTED PARTS ARE BRASS ALLOY C83600/C87850

DWG NUMBER
H15172N

TITLE TO AND OWNERSHIP OF THIS ENGINEERING
 DATA REMAINS IN Mueller Co. NO USE IS TO BE
 MADE OF THIS DATA EXCEPT AS SPECIFICALLY
 AUTHORIZED BY Mueller Co. ASSENT ON THE PART
 OF THE RECIPIENT TO THESE CONDITIONS IS PRESUMED

DRFTR	AD	02/08/23	MUELLER	
CHKR				
ENGR			UNLESS OTHERWISE NOTED SURFACE PREPARATION: BREAK CORNER(S) ---- .000 SURFACE FINISH -- XX RMS TOLERANCE(S): LINEAR ----- ± .016 ANGULAR ----- ± 0°30'	THIRD ANGLE PROJECTION
MGR				REF. No.
	BY	DATE		
STK No:				
MAT'L:				
DESCR.			MARK II ORISEAL (PHASE III) CTS 110 x FIP	
			DWG NUMBER H15172N	