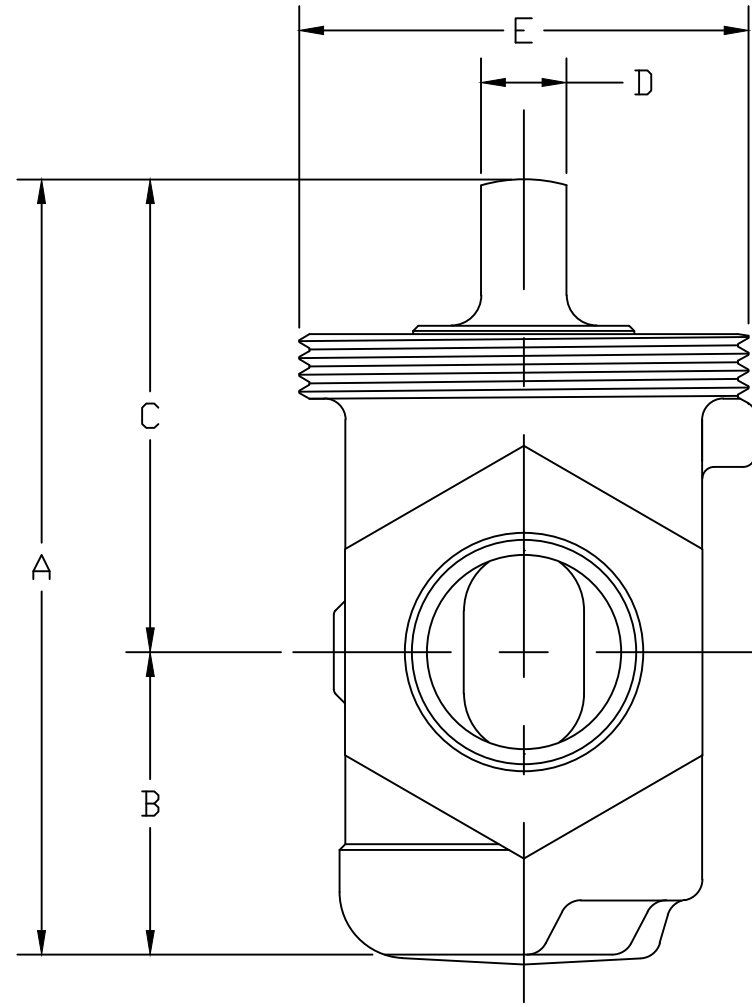
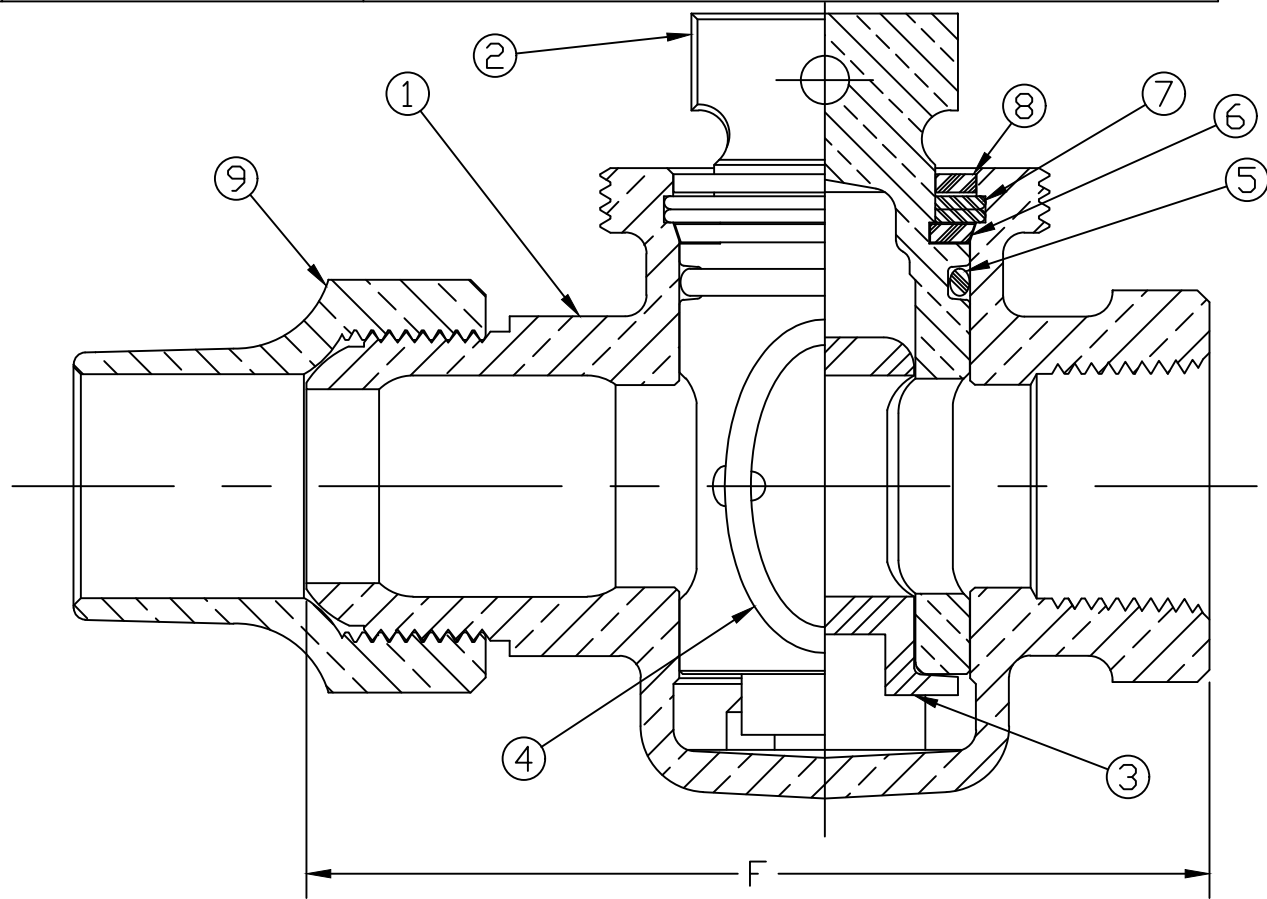


No.	DESCRIPTION	MATERIAL
1	BODY	LEAD FREE BRASS ALLOY ASTM B584
2	KEY	LEAD FREE BRASS ALLOY ASTM B584
3	KEY INSERT	CYCOLACL ASTM D1788-62T TYPE 1 GR 1
4	PORT O-RING	RUBBER
5	TOP O-RING	RUBBER
6	THRUST WASHER	CELCON GRADE M90-04
7	RETAINING RING	PHOSPHOR BRONZE ASTM B103
8	TOP SEAL	RUBBER
9	TUBE NUT	CAST BRSS ALLOY ASTM B584

SIZE	A	B	C	D	E	F
3/4"	3.45	1.34	2.11	.44	1.848-11 1/2	3.86
1"	4.00	1.56	2.44	.50	2.316-11 1/2	4.66
1 1/4"	4.38	1.73	2.64	.53	2.798-8	5.48
1 1/2"	5.51	2.09	3.42	.53	3.401-8	6.03
2"	6.05	2.34	3.70	.56	3.893-8	7.20



MEETS ALL REQUIREMENTS OF AWWA C800
 ALL WETTED PARTS ARE LEAD FREE BRASS ALLOY C89833/C87850
 ALL NON WETTED PARTS ARE BRASS ALLOY C83600/C87850

DWG NUMBER
H15174N

DRFTR	AD	02/07/23	MUELLER	
CHKR				
ENGR			UNLESS OTHERWISE NOTED	THIRD ANGLE PROJECTION
MGR				SURFACE PREPARATION: BREAK CORNER(S) ---- .000 SURFACE FINISH -- XX RMS
	BY	DATE	TOLERANCE(S): LINEAR ----- ± .000 ANGULAR ----- ± 0°00'	SCALE
STK No:				FULL
MAT'L:				
DESCR.			MARK II ORISEAL VALVE (CS x FIP)	
			DWG NUMBER H15174N	