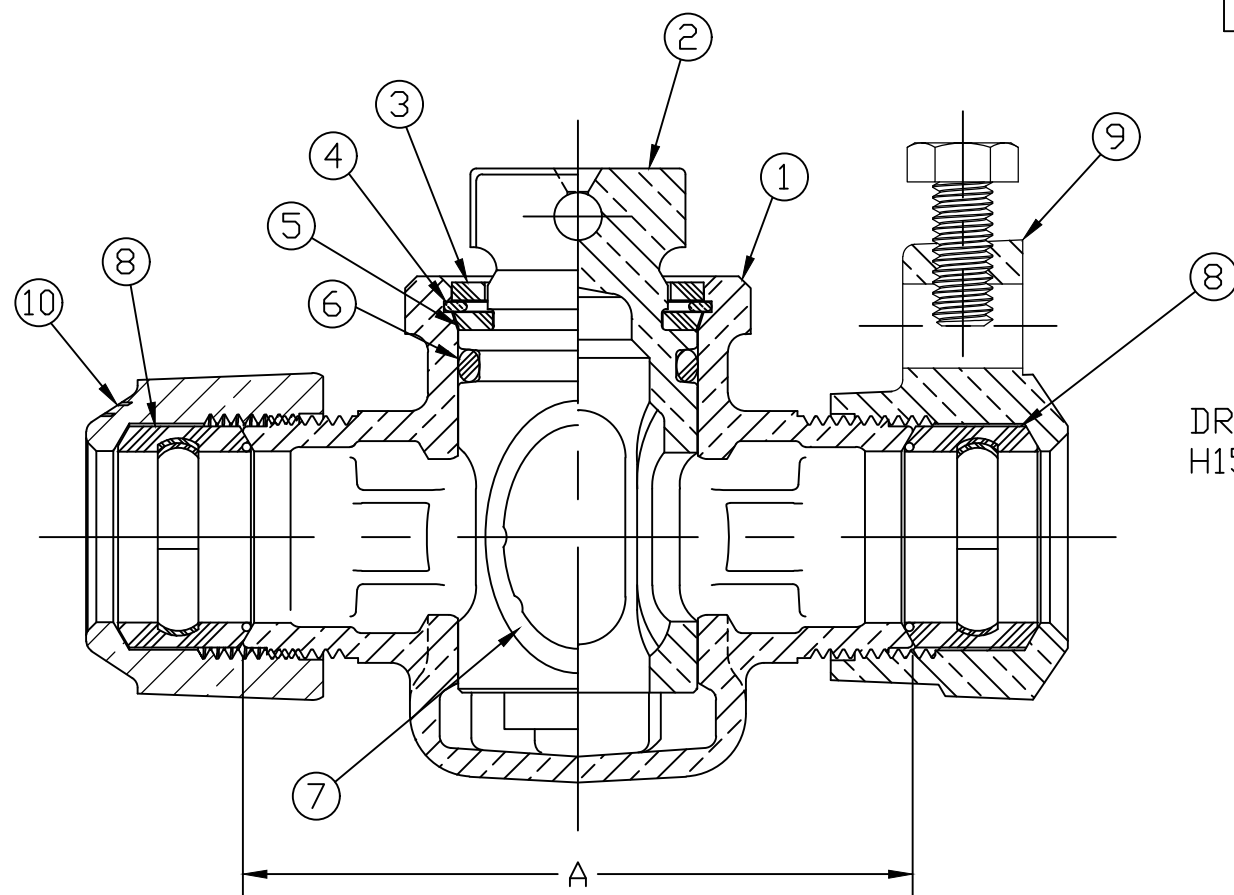


SIZE	A	B	C	D
3/4	3.49	1.92	3.17	.44
1	4.75	2.44	4.00	.44
1-1/2	6.31	3.42	5.52	.53
2	6.03	3.70	6.05	.56

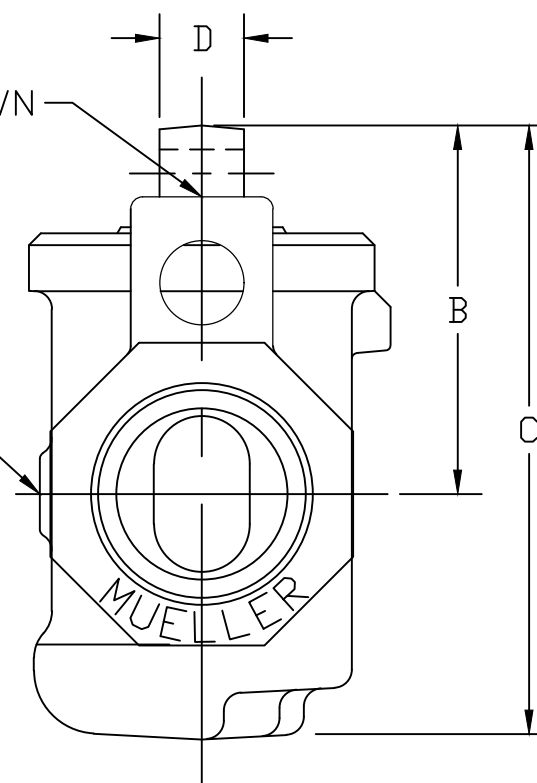
LUBE PER MUELLER ESP E-95 }

No.	QTY.	DESCRIPTION	MATERIAL
1	1	BODY	LEAD FREE BRASS ALLOY ASTM B584
2	1	KEY	LEAD FREE BRASS ALLOY ASTM B584
3	1	TOP SEAL	RUBBER, MUELLER RUBBER CODE R8
4	1	RETAINING RING	BRONZE ASTM B103 ALLOY C52100
5	1	THRUST WASHER	CELCON GRADE M90 CF2001
6	1	TOP O-RING	RUBBER, ASTM D-2000 (EPDM)
7	1	PORT O-RING	RUBBER, ASTM D-2000 (EPDM)
8	2	CTS GSKT SUB	SBR D2000 - GSKT 410 _{SS} - BAND
9	1	THAW NUT W/ SCREW	CAST BRASS ALLOY ASTM B584
10	1	CONN NUT	CAST BRASS ALLOY ASTM B584



SCREW NOT SHOWN

DRAIN HOLE ON H1521907N ONLY



MEETS ALL REQUIREMENTS OF AWWA C800
 ALL WETTED PARTS ARE LEAD FREE BRASS ALLOY C89833/C87850
 ALL NON WETTED PARTS ARE BRASS ALLOY C83600/C87850

DRFTR	AD	02/08/23	MUELLER	
CHKR				
ENGR			UNLESS OTHERWISE NOTED SURFACE PREPARATION: BREAK CORNER(S) ----- .000 SURFACE FINISH -- XX RMS	THIRD ANGLE PROJECTION
MGR				TOLERANCE(S): LINEAR ----- ± .016 ANGULAR ----- ± 0°30'
BY		DATE		SCALE
STK No:				FULL
MAT'L:				
DESCR.		MARK II DRISEAL VALVE 110 CTS × 110 CTS THAW		DWG NUMBER H1520907N

DWG NUMBER
H1520907N

TITLE TO AND OWNERSHIP OF THIS ENGINEERING DATA REMAINS IN Mueller Co. NO USE IS TO BE MADE OF THIS DATA EXCEPT AS SPECIFICALLY AUTHORIZED BY Mueller Co. ASSENT ON THE PART OF THE RECIPIENT TO THESE CONDITIONS IS PRESUMED