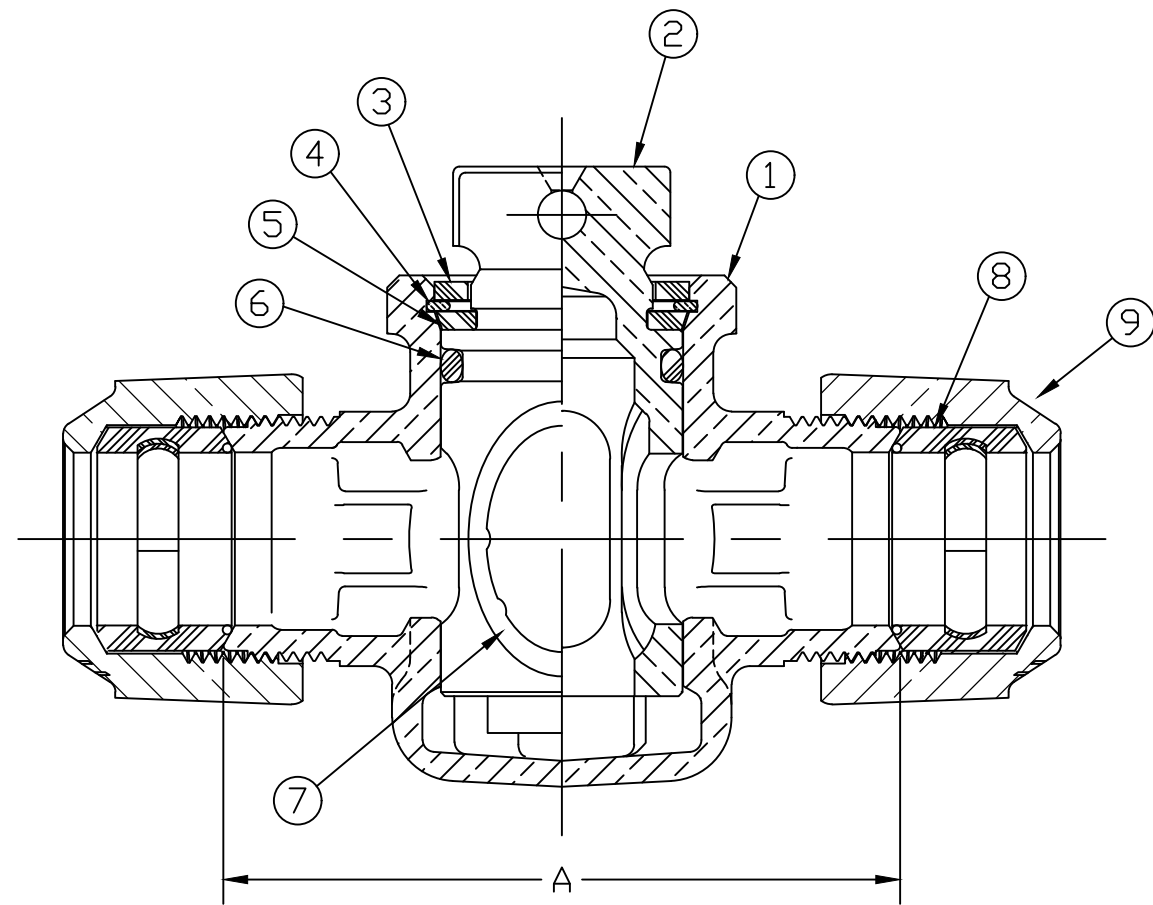


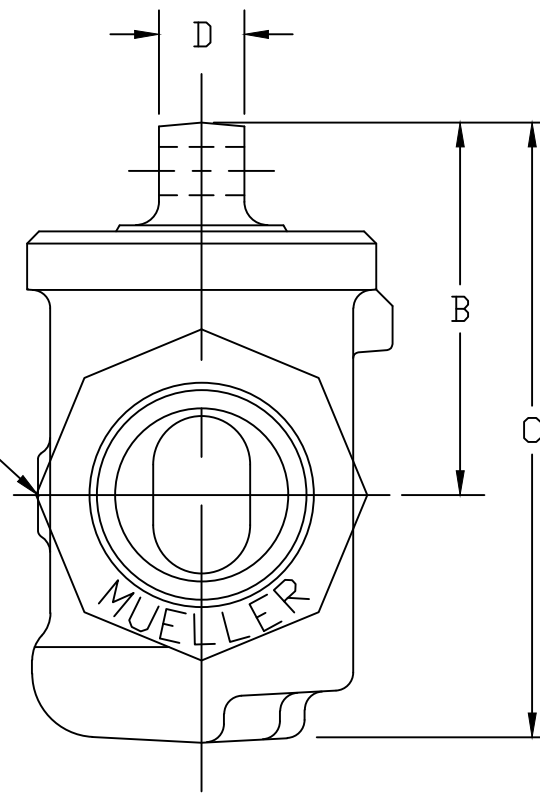
SIZE	A	B	C	D
1/2	4.22	2.11	3.41	.44
5/8	4.25	2.11	3.45	.44
3/4	3.49	1.92	3.17	.44
1	4.75	2.44	4.00	.44
1-1/4	7.90	2.64	4.38	.53
1-1/2	6.31	3.42	5.52	.53
2	6.03	3.70	6.05	.56

LUBE PER MUELLER ESP E-95 }

No.	QTY.	DESCRIPTION	MATERIAL
1	1	BODY	LEAD FREE BRASS ALLOY ASTM B584
2	1	KEY	LEAD FREE BRASS ALLOY ASTM B584
3	1	TOP SEAL	RUBBER, MUELLER RUBBER CODE R8
4	1	RETAINING RING	BRONZE ASTM B103 ALLOY C52100
5	1	THRUST WASHER	CELCON GRADE M90 CF2001
6	1	TOP O-RING	RUBBER, ASTM D-2000 (EPDM)
7	1	PORT O-RING	RUBBER, ASTM D-2000 (EPDM)
8	2	CTS GSKT SUB	SBR D2000 - GSKT 410ss - BAND
9	2	CONN. NUT	CAST BRASS ALLOY ASTM B584



DRAIN HOLE ON H-15219N ONLY



MEETS ALL REQUIREMENTS OF AWWA C800
 ALL WETTED PARTS ARE LEAD FREE BRASS ALLOY C89833/C87850
 ALL NON WETTED PARTS ARE BRASS ALLOY C83600/C87850

DWG NUMBER
H15209N

TITLE TO AND OWNERSHIP OF THIS ENGINEERING DATA REMAINS IN Mueller Co. NO USE IS TO BE MADE OF THIS DATA EXCEPT AS SPECIFICALLY AUTHORIZED BY Mueller Co. ASSENT ON THE PART OF THE RECIPIENT TO THESE CONDITIONS IS PRESUMED

DRFTR	AD	02/07/23	MUELLER	
CHKR				
ENGR			UNLESS OTHERWISE NOTED	THIRD ANGLE PROJECTION
MGR				
			SURFACE PREPARATION: BREAK CORNER(S) ---- .000	REF. No.
			SURFACE FINISH -- XX RMS	
	BY	DATE	TOLERANCE(S): LINEAR ----- ± .016	FULL
			ANGULAR ----- ± 0°30'	
STK No:			MAT'L:	
DESCR.			DWG NUMBER	
MARK II ORISEAL ASSEMBLY (PHASE III)			H15209N	
CTS 110 x CTS 110				