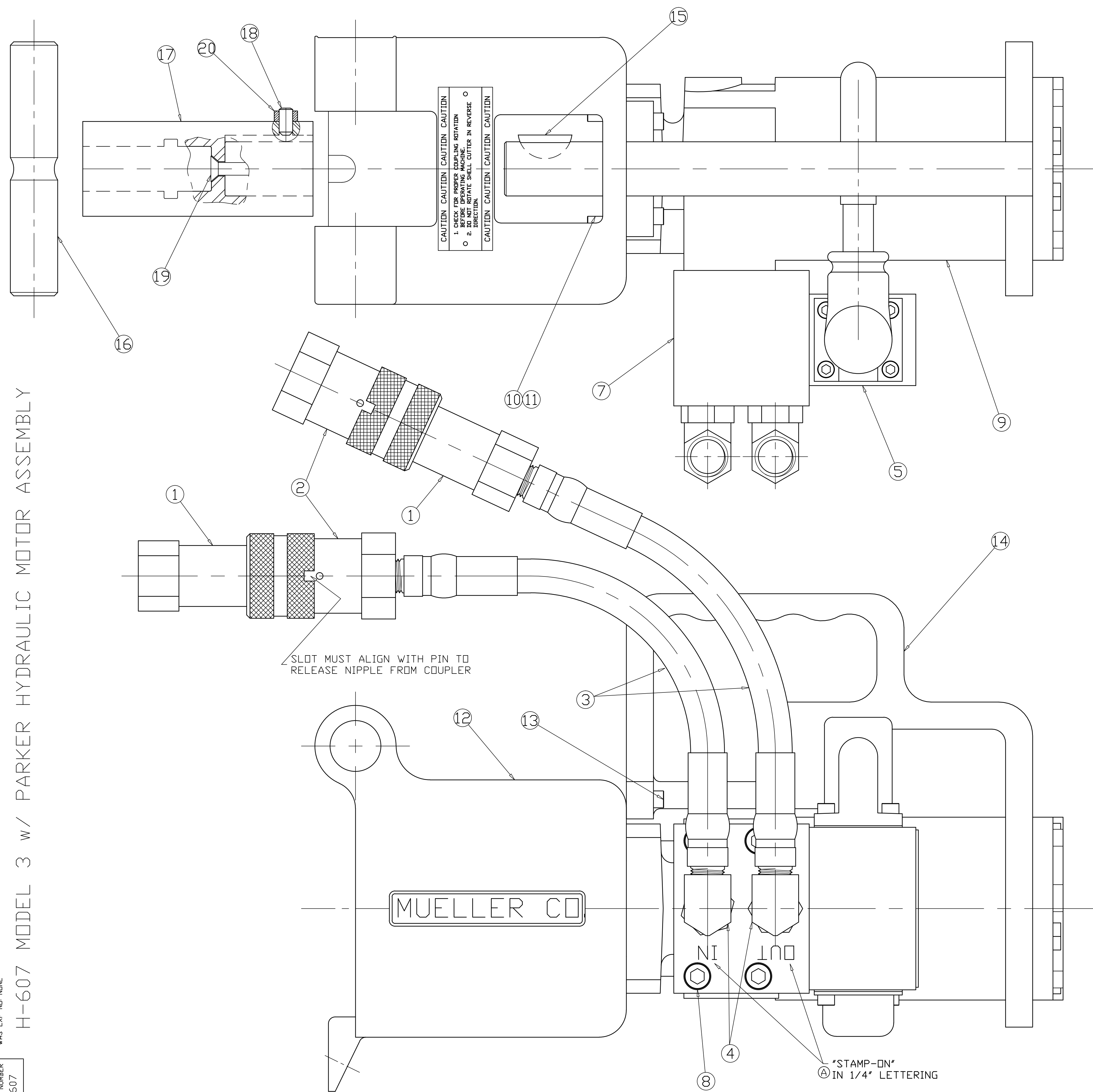


H-607 MODEL 3 W/ PARKER HYDRAULIC MOTOR ASSEMBLY

DWG NUMBER H607  
70



COMPONENT PARTS

No.	MUELLER PART No.	REQD	DESCRIPTION	VENDOR (PART No.) EQUIVALENCE
20	508317	1	JAM NUT-HEX	1/4-20UNC ST. STEEL
19	311768	1	FLAT HD SLOTTED SCREW	1/4-20UNC x 3/4"Lg W/ INSERT
18	501303	1	SET SCREW	CUP POINT 1/4"-20UNC x 1/2"Lg
17	525250	1	COUPLING	
16	54488	1	PIVOT PIN	
15	98228	1	KEY	WOODRUFF, 1/4" x 1"
14	311769	1	HANDLE	
13	92754	2	SCH CAP SCREW	1/4-20UNC x 1"Lg
	60354	6	DRIVE SCREW	Not Shown
	528053	1	NAMEPLATE	Not Shown
	311762	1	CAUTION PLATE	
	311674	1	ADAPTER	
		1	ADAPTER ASSY	
11	311723	4	LOCKWASHER	NOM 3/8"-HIGH COLLAR
10	310073	4	SCH CAP SCREW	3/8-16UNC x 1"Lg
9	311681	1	HYDRAULIC MOTOR	PARKER No. TE390-FM100AAAB
8	301229	4	SCH CAP SCREW	5/16-18UNC x 2 1/2"Lg
7		1	MANIFOLD	HEEREN No. A
6				
5	311770	1	CONTROL VALVE	PARKER No. DIVL8NNX4700
4	311718	2	ELBOW, FEMALE	PARKER No. 8-3/8 AEOG-S
		1	FITTING	PARKER No. 10155-6-6
		1	HOSE	PARKER No. 5188-6
		1	FITTING	PARKER No. 10155-8-6
3		2	HOSE ASSY, 9'	
2	311716	2	COUPLER, 3/8"	PARKER No. FF-371-8FP C
1	311715	2	NIPPLE, 3/8"	PARKER No. FF-372-8FP C
No.	MUELLER PART No.	REQD	DESCRIPTION	VENDOR (PART No.) EQUIVALENCE

Packaged in a Bag

TITLE AND OWNERSHIP OF THIS ENGINEERING DATA REMAINS IN THE HANDS OF MUELLER CO. NO USE IS TO BE MADE OF THIS DATA EXCEPT AS SPECIFICALLY AUTHORIZED BY MUELLER CO. ASSUMING THE PART OF THE RECIPIENT TO THESE CONDITIONS IS PRESUMED.

FILEPATH: PRODD-ENG\MUELLER\APPROVED\H607	DRFTR	RWB	9/22/97				
	CHKR	JGarvin	10/28/97				
	ENGR	JEL	10/28/97				
	MGR						
C 4674	FF-371-8FP WAS	6/27/17	RWB SLC				
	FF-501-8FP WAS						
	FF-372-8FP WAS						
	FF-502-8FP						
B 2970	REVD SEE FILE	6/29/06	JG DMJ				
A 2367	"IN" WAS "P"	2/27/03	JG DMJ				
	"OUT" WAS "T"						
REV	ECR	DESCRIPTION	DATE	BY	CHKR	DESCR.	H-607 MODEL 3 WITH "PARKER" HYDRAULIC MOTOR ASSEMBLY
PER	EST	NO: D2886	EST	FIN	WT = 0.0000	lbs	

UNLESS OTHERWISE NOTED  
SURFACE PREPARATION:  
BREAK CORNER(S) ---- .000  
SURFACE FINISH --- .000 RMS  
TOLERANCE(S):  
LINEAR ----- ± .000  
ANGULAR ----- ± 0°00'

Mueller Co.

THIRD ANGLE PROJECTION

REF. No. SCALE FULL

DWG NUMBER H607