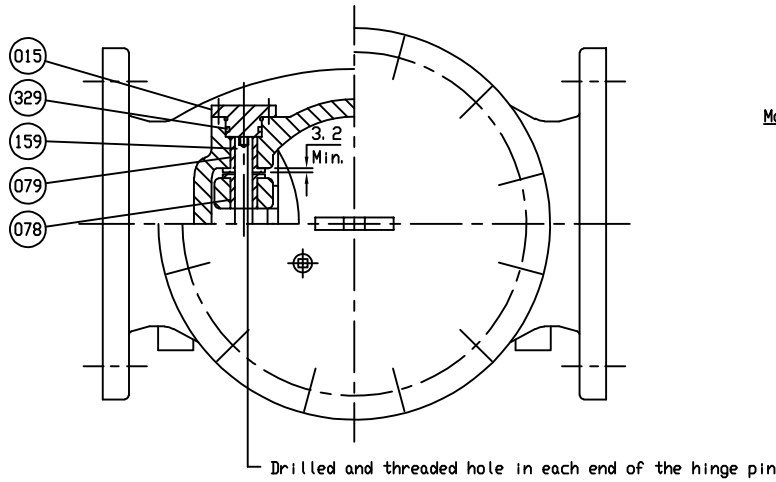


ISSUE #	DATE	CHANGE DESCRIPTION	BY	AP
01	04/27/18	UPDATE TYPE	DCC	SS



Marking

UL ◀ FM ▶ ULC  
 SIZE (INCH) SCI  
 250 CWP 20\_\_  
 SG-RES 130U  
 THAILAND



DETAIL A FOR TAG PLATE

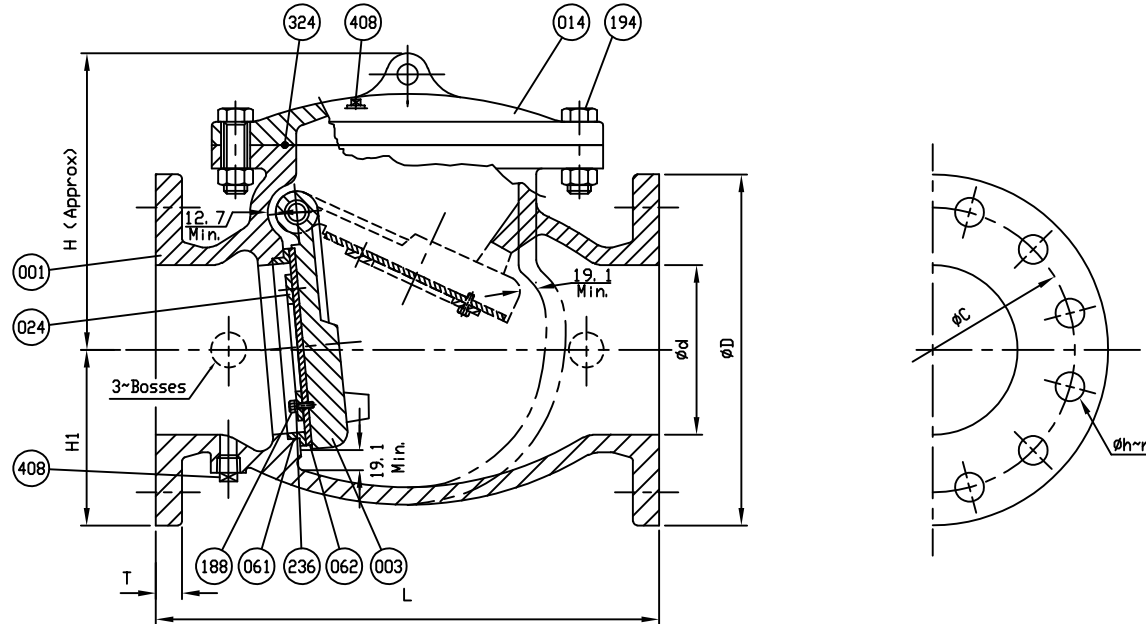
Remark - Flanged connection : Other Standards are also available.

NO.	PARTS	MATERIAL	ASTM. DESIGNATION.	Q'TY
408	Plug (B)	Stainless Steel	A 276 Type 304	2
329	O-Ring	Rubber (Buna N) or Rubber (EPDM)	D 2000 BK 7014 or D 2000 CA 7014	2
324	Cover Gasket	Rubber (Buna N) or Rubber (EPDM)	D 2000 BK 707 or D 2000 CA 707	1
236	Spring Washer	Stainless Steel	A 276 Type 304	1set
194	Cover Bolt & Nut	Zinc Coated Steel	F3125 Grade A325 Type 1	1set
188	Disc Seat Bolt	Stainless Steel	A 276 Type 304	1set
159	Hinge Pin	Stainless Steel	A 276 Type 304	1
079	Body Bushing	Bronze	B 62	2
078	Disc Bushing	Bronze	B 62	2
062	Disc Seat Ring	Rubber (Buna N) or Rubber (EPDM)	D 2000 BK 7014 or D 2000 CA 7014	1
061	Body Seat Ring	Bronze	B 62	1
024	Seat Holder	Ductile Iron	A 536 Gr. 65-45-12	1
015	End Plate	Ductile Iron	A 536 Gr. 65-45-12	1
014	Cover	Ductile Iron	A 536 Gr. 65-45-12	1
003	Disc	Ductile Iron	A 536 Gr. 65-45-12	1
001	Body	Ductile Iron	A 536 Gr. 65-45-12	1

MATERIAL LIST			
HYDRD SHELL		500	PSI.
HYDRD VALVE SEAT		500	PSI.
HYDRD BODY STRENGTH TEST		-	PSI.
AIR SEAT		-	PSI.
STEAM		-	PSI.
TEST PRESSURE			
WORKING PRESSURE		250	PSI.

**Mueller Co.**

SCALE	DR. J. RAMIREZ	DATE 08/10/17	REF. DWG.
N.T.S.	CHK. ALA APP.	E.C.N.	USA2250A
TITLE			
SWING CHECK VALVE			
SIZE 14" (350), 16" (400)			
TYPE:	DWG NO.	REV.	
A2122B1	M50109	1	



Dimensions in inches.

SIZE ød in. mm.	L	ANSI B16.1 CL. 125					H	H1	Plug Size
		øD	øC	øh	n	T			
14 (350)	31±½	21	18¾	1½	12	1¾	20¹⁵⁄₁₆	10½	1
16 (400)	36±½	23½	21¼	1½	16	1⁷⁄₁₆	23¾	11¾	1