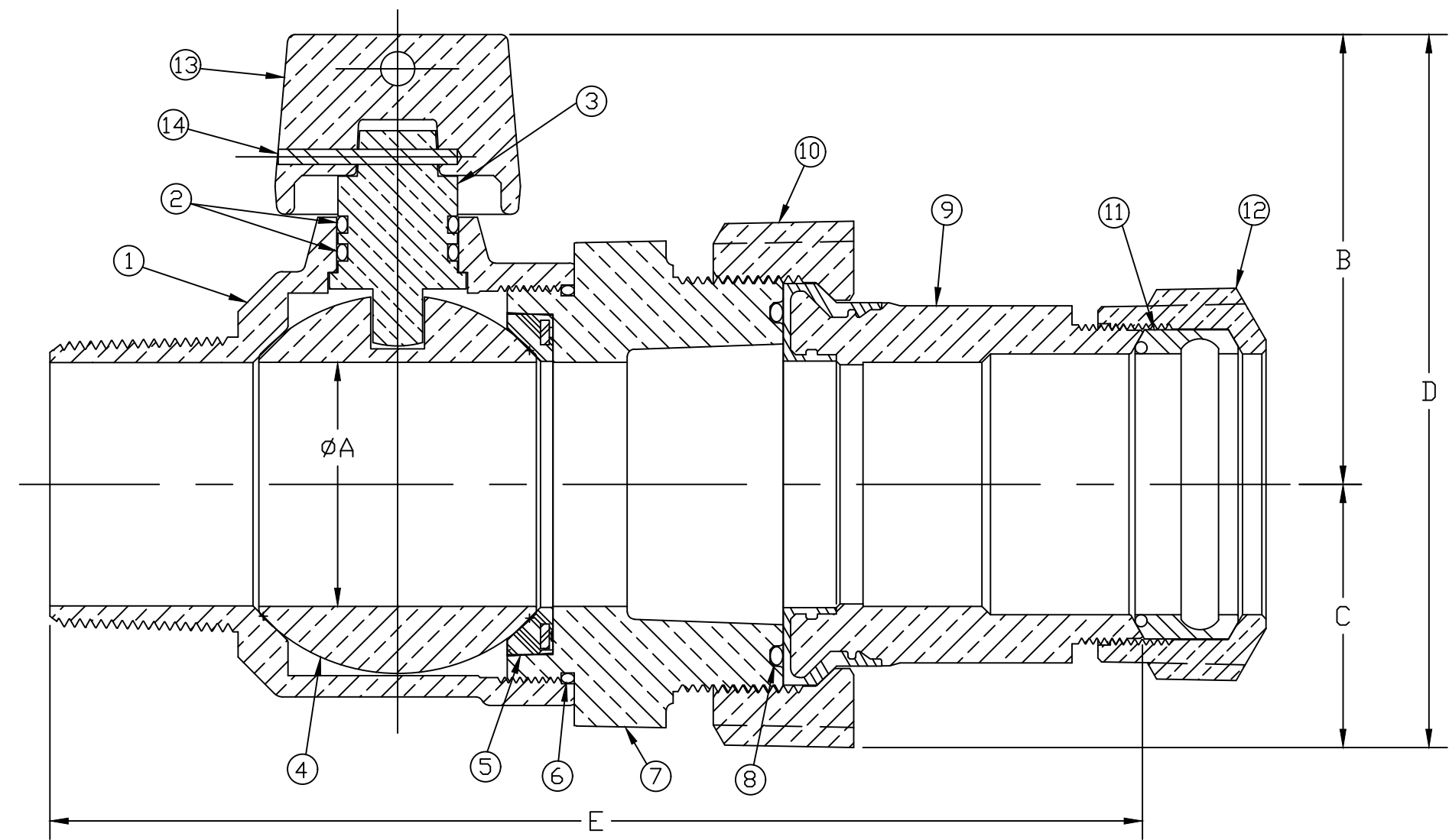


TITLE TO AND OWNERSHIP OF THIS ENGINEERING DATA REMAINS IN Mueller Co. NO USE IS TO BE MADE OF THIS DATA EXCEPT AS SPECIFICALLY AUTHORIZED BY Mueller Co. ASSENT ON THE PART OF THE RECIPIENT TO THESE CONDITIONS IS PRESUMED



SIZE	ØA	B	C	D	E
3/4"	.750	2.245	1.078	3.330	5.599
1"	1.000	2.425	1.353	3.713	6.334
2"	2.000	3.702	2.165	5.868	8.988

No.	DESCRIPTION	MATERIAL
1	BODY	CAST NO LEAD BRASS ALLOY
2	O-RING	EP RUBBER ASTM D2000
3	STEM	NO LEAD BRASS ALLOY
4	BALL	NO LEAD BRASS ALLOY
5	GASKET	NITRILE RUBBER ASTM D2000
6	O-RING	EP RUBBER ASTM D2000
7	END PIECE	CAST NO LEAD BRASS ALLOY
8	O-RING	NITRILE RUBBER ASTM D2000
9	INS. TAILPC ASS'Y	LOW LEAD BRASS ALLOY w/ MOLDED NYLON
10	COUP. NUT	CAST BRASS ASTM B62 ALLOY C83600
11	CTS GSKT ASSY	SBR RUBBER ASTM D2000
12	CONN NUT	CAST BRASS ASTM B62 ALLOY C83600
13	CAP	CAST BRASS ASTM B62 ALLOY C83600
14	ROLLPIN	ASTM A240 STAINLESS STEEL

ALL WETTED PARTS ARE NO LEAD BRASS ALLOY

FILEPATH: PROD-ENG\MUELLER\ASYSUBMITTALS\N3502810N

DRFTR	RWB	7/9/20	<b>MUELLER</b>	UNLESS OTHERWISE NOTED THIRD ANGLE PROJECTION SURFACE PREPARATION: BREAK CORNER(S) ----- .000 SURFACE FINISH -- XX RMS TOLERANCE(S): LINEAR ----- ± .000 ANGULAR ----- ± 0°00'	
CHKR					
ENGR					
MGR					
BY			DATE	REF. No.	
STK No:				SCALE	
MAT'L:				NONE	
DESCR.			BALL CORP NLB VALVE W/ CAP AWWA IP x INSULATED TAILPC 110CTS	DWG NUMBER N3502810N	
REV	ECR	DESCRIPTION	DATE	BY	CHKR
PER EST NO: XXXXX EST FIN WT = 0.0000 lbs					

DWG NUMBER  
N3502810N