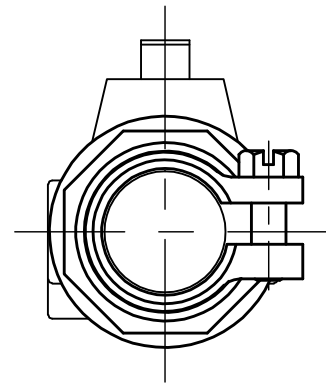
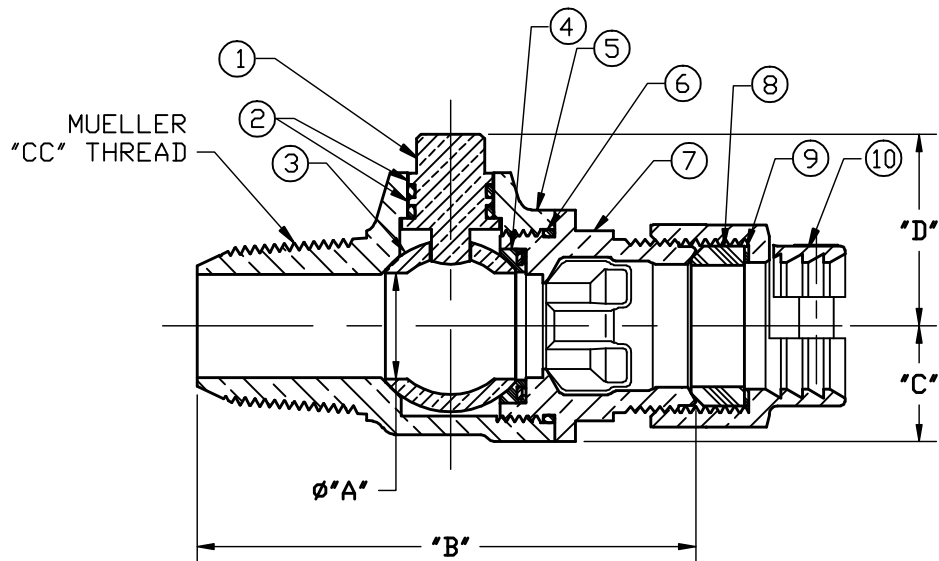


No.	DESCRIPTION	MATERIAL
1	STEM	LOW LEAD BRASS ALLOY
2	O-RING	EPDM D2000
3	BALL	LOW LEAD BRASS ALLOY
4	GASKET - SEAL	NITRILE D2000
5	BODY	CAST LOW LEAD BRASS ALLOY
6	O-RING	EPDM D2000
7	END PIECE	CAST LOW LEAD BRASS ALLOY
8	PJ GASKET	BUNA-N ASTM D2000
9	PJ WASHER	POLYPROPYLENE
10	CLPG NUT SUB	CAST BRASS ASTM B62 ALLOY C83600



SIZE	$\phi A$	B	C	D
3/4	.75	3.62	.84	1.36
3/4x1	.75	3.86	.84	1.39
1	1.00	4.65	1.15	1.56
1-1/2	1.50	5.16	1.50	2.12
2	2.00	5.61	1.82	2.44

**NOTE:** ALL WETTED PARTS ARE LOW LEAD BRASS ALLOYS

FILEPATH: PROD-ENG/MUELLER/ASYSUBMITTALS/P25008N

DRFTR	JGarvin	12/18/08	<b>Mueller Co.</b>			
CHKR						
ENGR						
MGR						
BY			DATE	UNLESS OTHERWISE NOTED THIRD ANGLE PROJECTION SURFACE PREPARATION: BREAK CORNER(S) ---- .000 SURFACE FINISH -- XX RMS TOLERANCE(S): LINEAR ----- ± .000 ANGULAR ----- ± 0°00'		
STK No:						
MAT'L:				REF. No.	SCALE	
DESCR.			MUELLER CORP. STOP BALL VALVE LOW LEAD BRASS ('CC' x PJ CTS)		NONE	
REV	ECR	DESCRIPTION	DATE	BY	CHKR	PART NUMBER
PER EST NO: DXXXX EST FIN WT = 0.0000 lbs						P25008N

PART NUMBER  
P25008N  
442-MRKTG