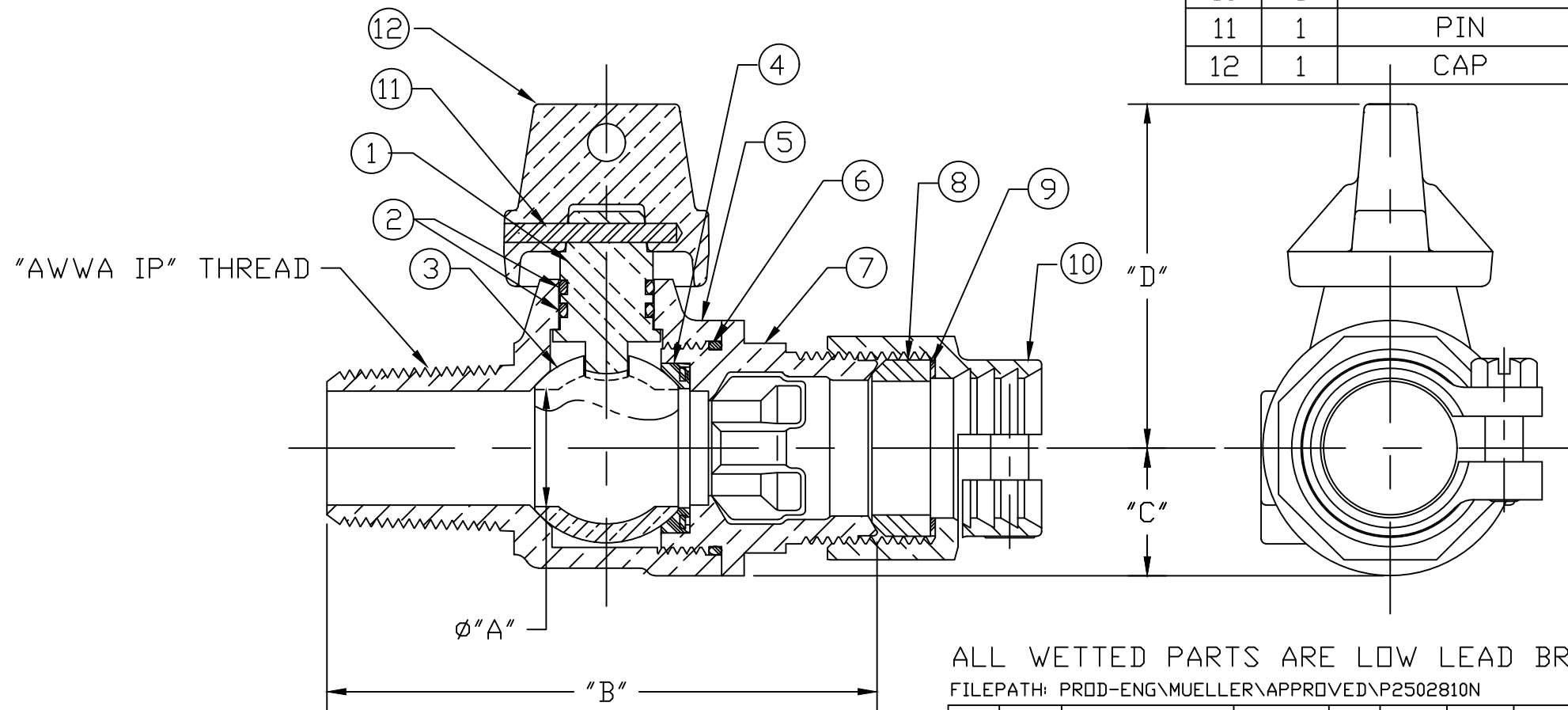


No.	QTY.	DESCRIPTION	MATERIAL
1	1	STEM	LOW LEAD BRASS ALLOY
2	2	O-RING	EPDM D2000
3	1	BALL	LOW LEAD BRASS ALLOY
4	1	GASKET - SEAL	NITRILE D2000
5	1	BODY	CAST LOW LEAD BRASS ALLOY
6	1	O-RING	EPDM D2000
7	1	END PIECE	CAST LOW LEAD BRASS ALLOY
8	1	PJ CTS GSKT	BUNA N ASTM D2000
9	1	PJ WASHER	POLYPROPYLENE
10	1	CLPG NUT SUB	CAST BRASS ASTM B62 ALLOY C83600
11	1	PIN	AISI 304 STAINLESS STEEL
12	1	CAP	CAST BRASS ASTM B62 ALLOY C83600



SIZE	ØA	B	C	D
3/4	.75	3.62	.84	2.32
1	1.00	4.65	1.15	2.57
1-1/2	1.50	5.16	1.50	3.37
2	2.00	5.61	1.82	3.69

ALL WETTED PARTS ARE LOW LEAD BRASS ALLOY

FILEPATH: PROD-ENG\MUELLER\APPROVED\P2502810N

DWG NUMBER
P2502810N
442-MRKTG

TITLE TO AND OWNERSHIP OF THIS ENGINEERING DATA REMAINS IN Mueller Co. NO USE IS TO BE MADE OF THIS DATA EXCEPT AS SPECIFICALLY AUTHORIZED BY Mueller Co. ASSENT ON THE PART OF THE RECIPIENT TO THESE CONDITIONS IS PRESUMED

DRFTR	JGarvin	3/10/11	MUELLER		
CHKR					
ENGR					
MGR					
UNLESS OTHERWISE NOTED			THIRD ANGLE PROJECTION		
SURFACE PREPARATION:			REF. No. SCALE		
BREAK CORNER(S) ---- .000					
SURFACE FINISH -- XX RMS			NONE		
TOLERANCE(S):					
LINEAR ----- ± .000					
ANGULAR ----- ± 0°00'					
STK No:					
MAT'L:					
DESCR.			DWG NUMBER		
LLB CORP STOP BALL VALVE w/ CAP			P2502810N		
("AWWA IP" x PJ CTS)					
REV	ECR	DESCRIPTION	DATE	BY	CHKR
PER EST NO: DXXXX EST FIN WT = 0.0000 lbs					