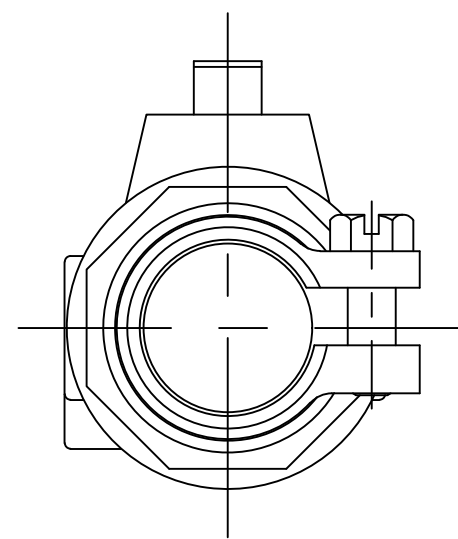
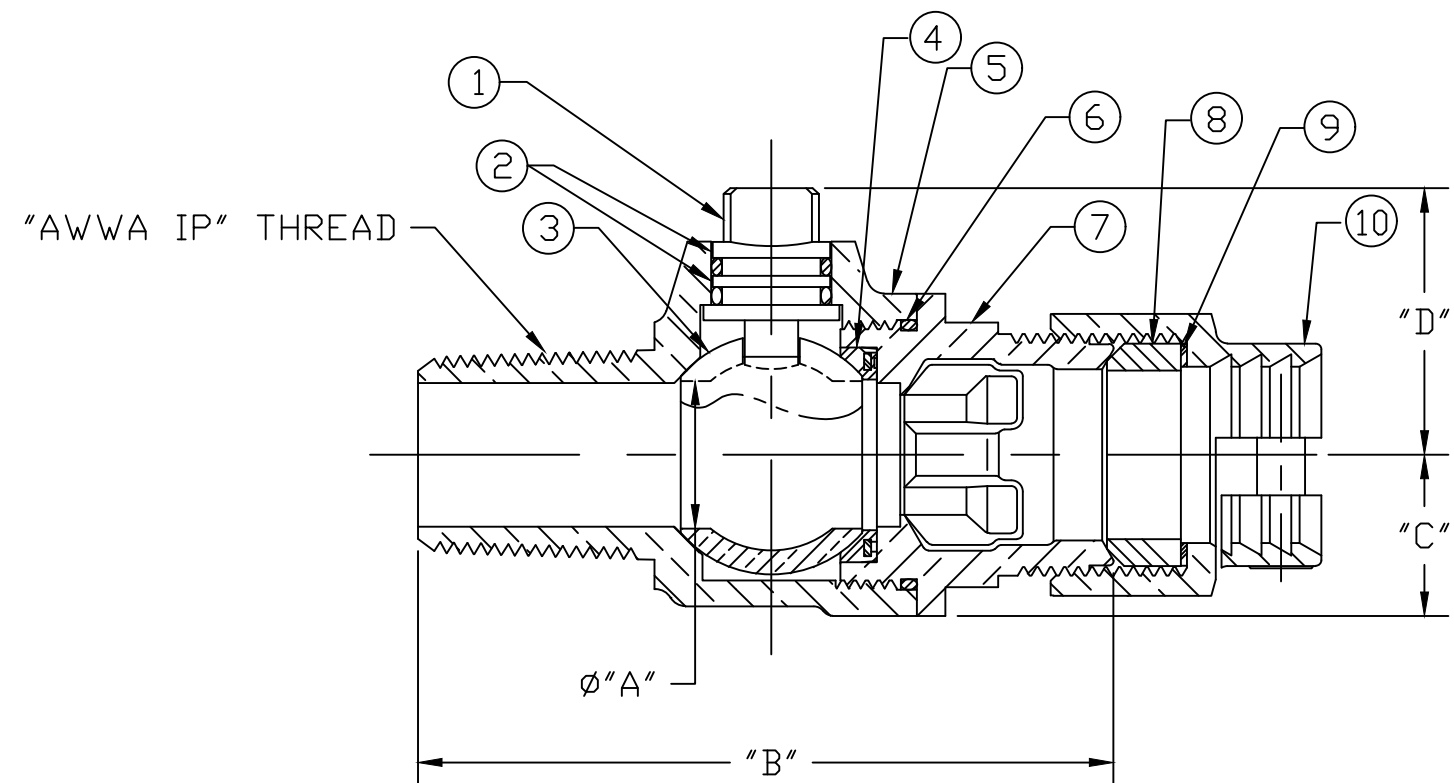


No.	QTY.	DESCRIPTION	MATERIAL
1	1	STEM	NO LEAD BRASS ALLOY
2	2	O-RING	EPDM D2000
3	1	BALL	NO LEAD BRASS ALLOY
4	1	GASKET - SEAL	EPDM D2000
5	1	BODY	CAST NO LEAD BRASS ALLOY
6	1	O-RING	EPDM D2000
7	1	END PIECE	CAST NO LEAD BRASS ALLOY
8	1	PJ CTS GSKT	EPDM D2000
9	1	PJ WASHER	POLYPROPYLENE
10	1	CLPG NUT SUB	CAST BRASS ASTM B62 ALLOY C83600



SIZE	ØA	B	C	D
3/4	.75	3.62	.84	1.36
3/4x1	.75	3.86	.84	1.39
1	1.00	4.65	1.15	1.56
1-1/2	1.50	5.16	1.50	2.12
2	2.00	5.61	1.82	2.44

ALL WETTED PARTS ARE NO LEAD BRASS ALLOY

FILEPATH: PROD-ENG\MUELLER\ASYSUBMITTALS\P25028N

DRFTR	JGarvin	10/4/11	MUELLER		
CHKR					
ENGR					
MGR					
			UNLESS OTHERWISE NOTED	THIRD ANGLE PROJECTION	
			SURFACE PREPARATION:		
			BREAK CORNER(S) ---- .000		
			SURFACE FINISH -- XX RMS	REF. No.	
			TOLERANCE(S):	SCALE	
			LINEAR ----- ± .000	NONE	
			ANGULAR ----- ± 0°00'		
			STK No:		
			MAT'L:		
			DESCR.		
			NLB CORPORATION STOP BALL VALVE	DWG NUMBER	
			("AWWA IP" x PJ CTS)	P25028N	
REV	ECR	DESCRIPTION	DATE	BY	CHKR
PER EST NO: DXXXX EST FIN WT = 0.0000 lbs					

DWG NUMBER
P25028N
442-MRKTG

TITLE TO AND OWNERSHIP OF THIS ENGINEERING DATA REMAINS IN Mueller Co. NO USE IS TO BE MADE OF THIS DATA EXCEPT AS SPECIFICALLY AUTHORIZED BY Mueller Co. ASSENT ON THE PART OF THE RECIPIENT TO THESE CONDITIONS IS PRESUMED