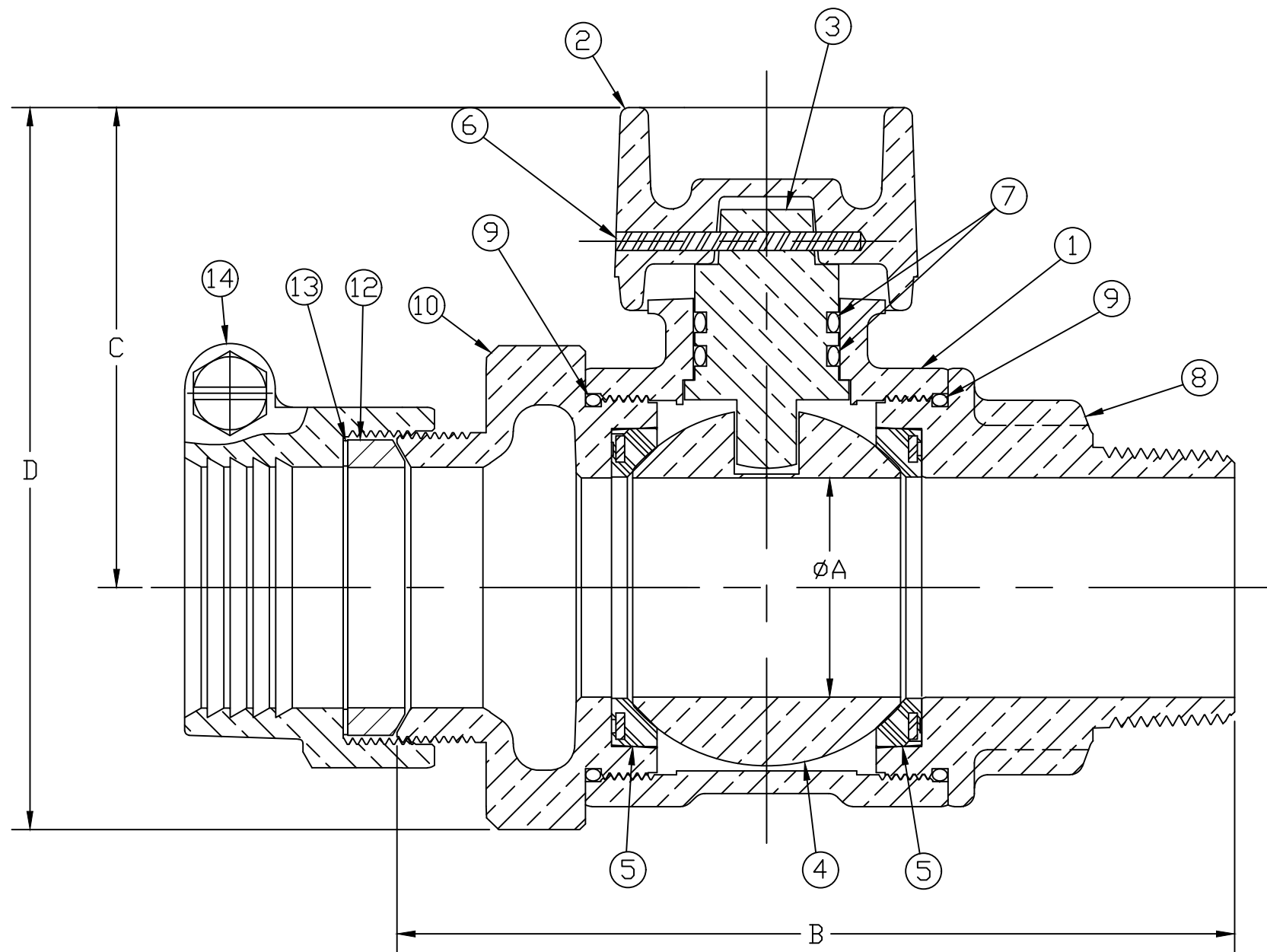


No.	DESCRIPTION	REQ'D	MATERIAL DESCRIPTION
1	BODY	1	CAST NO LEAD BRASS ALLOY
2	CAP	1	CAST BRASS ASTM B62 ALLOY C83600
3	STEM	1	NO LEAD BRASS ALLOY
4	BALL	1	NO LEAD BRASS ALLOY
5	GASKET	2	ASTM D2000 (NITRILE)
6	ROLL PIN	1	AISI 303 STAINLESS STEEL
7	O-RING	2	ASTM D2000 (EP)
8	END PIECE	1	CAST NO LEAD BRASS ALLOY
9	O-RING	1	ASTM D2000 (EP)
10	END PIECE	1	CAST NO LEAD BRASS ALLOY
11	O-RING	1	ASTM D2000 (EP)
12	PJ GASKET	1	ASTM D2000 (BUNA N)
13	WASHER	1	POLYPROPYLENE
14	CLPG NUT SUB	1	CAST BRASS ASTM B62 ALLOY C83600

SIZE	ØA	B	C	D
1-1/2"	1.50	5.734	3.287	4.943
2"	2.00	6.314	3.834	5.654



ALL WETTED PARTS ARE NO LEAD BRASS ALLOY

FILEPATH: PROD-ENG\MUELLER\APPROVED\P2512215N

DWG NUMBER  
P2512215N

TITLE TO AND OWNERSHIP OF THIS ENGINEERING DATA REMAINS IN Mueller Co. NO USE IS TO BE MADE OF THIS DATA EXCEPT AS SPECIFICALLY AUTHORIZED BY Mueller Co. ASSENT ON THE PART OF THE RECIPIENT TO THESE CONDITIONS IS PRESUMED

						DRFTR	RWB	3/3/20	<b>MUELLER</b>	UNLESS OTHERWISE NOTED THIRD ANGLE PROJECTION SURFACE PREPARATION: BREAK CORNER(S) ---- .000 SURFACE FINISH --XXX RMS TOLERANCE(S): LINEAR ----- ± .000 ANGULAR ----- ± 0°00'	REF. No.	SCALE FULL
						CHKR						
						ENGR						
						MGR						
							BY	DATE	STK No:			
									MAT'L:			
									DESCR.	INLINE NLB BALL CURB VALVE PJ CTS x MIP W/ 2" SQ. CAP		DWG NUMBER P2512215N
									PER EST NO: DXXXX EST FIN WT = 0.0000 lbs			