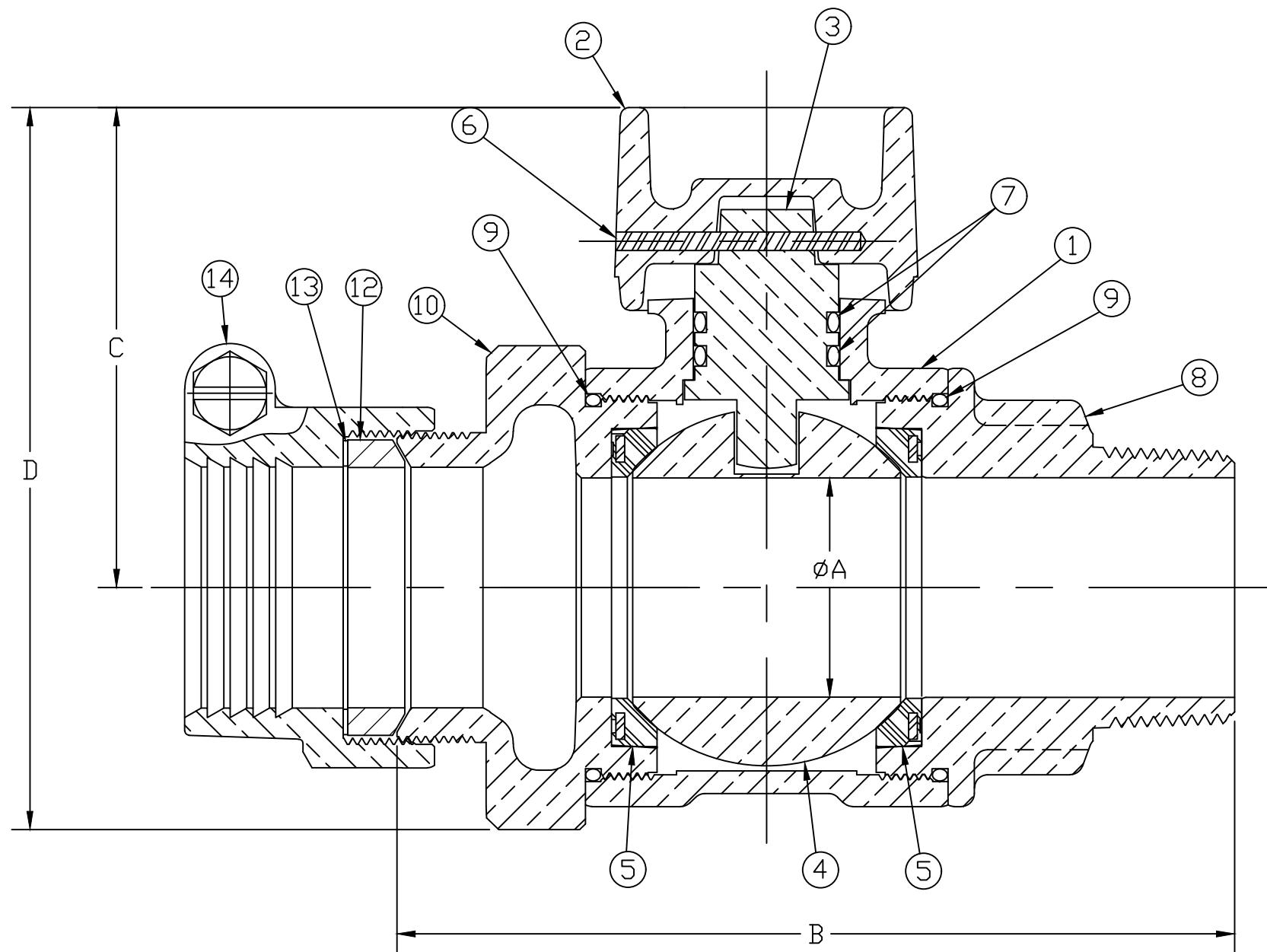


No.	DESCRIPTION	REQ'D	MATERIAL DESCRIPTION
1	BODY	1	LEAD FREE BRASS ALLOY ASTM B584
2	CAP	1	CAST BRASS ALLOY ASTM B584
3	STEM	1	LEAD FREE BRASS ALLOY ASTM B584/B371
4	BALL	1	LEAD FREE BRASS ALLOY ASTM B584
5	GASKET	2	EPDM D2000
6	ROLL PIN	1	AISI 303 STAINLESS STEEL
7	O-RING	2	EPDM D2000
8	END PIECE	1	LEAD FREE BRASS ALLOY ASTM B584
9	O-RING	1	EPDM D2000
10	END PIECE	1	LEAD FREE BRASS ALLOY ASTM B584
11	O-RING	1	EPDM D2000
12	PJ GASKET	1	ASTM D2000 (BUNA N)
13	WASHER	1	POLYPROPYLENE
14	CLPG NUT SUB	1	CAST BRASS ALLOY ASTM B584

SIZE	ØA	B	C	D
1-1/2"	1.50	5.734	3.287	4.943
2"	2.00	6.314	3.834	5.654



MEETS ALL REQUIREMENTS OF AWWA C800
 ALL STEMS ARE LEAD FREE BRASS ALLOY C89833/C69300
 ALL WETTED PARTS ARE LEAD FREE BRASS ALLOY C89833/C87850
 ALL NON WETTED PARTS ARE BRASS ALLOY C83600/C87850

DWG NUMBER
P2512215N

DRFTR	AD	03/10/23	MUELLER	
CHKR				
ENGR			UNLESS OTHERWISE NOTED	THIRD ANGLE PROJECTION
MGR				SURFACE PREPARATION: BREAK CORNER(S) ---- .000 SURFACE FINISH --XXX RMS
	BY	DATE	TOLERANCE(S): LINEAR ----- ± .000 ANGULAR ----- ± 0°00'	SCALE
STK No:				FULL
MAT'L:				
DESCR.	INLINE BALL CURB VALVE PJ CTS x MIP W/ 2" SQ. CAP			DWG NUMBER P2512215N

TITLE TO AND OWNERSHIP OF THIS ENGINEERING DATA REMAINS IN Mueller Co. NO USE IS TO BE MADE OF THIS DATA EXCEPT AS SPECIFICALLY AUTHORIZED BY Mueller Co. ASSENT ON THE PART OF THE RECIPIENT TO THESE CONDITIONS IS PRESUMED