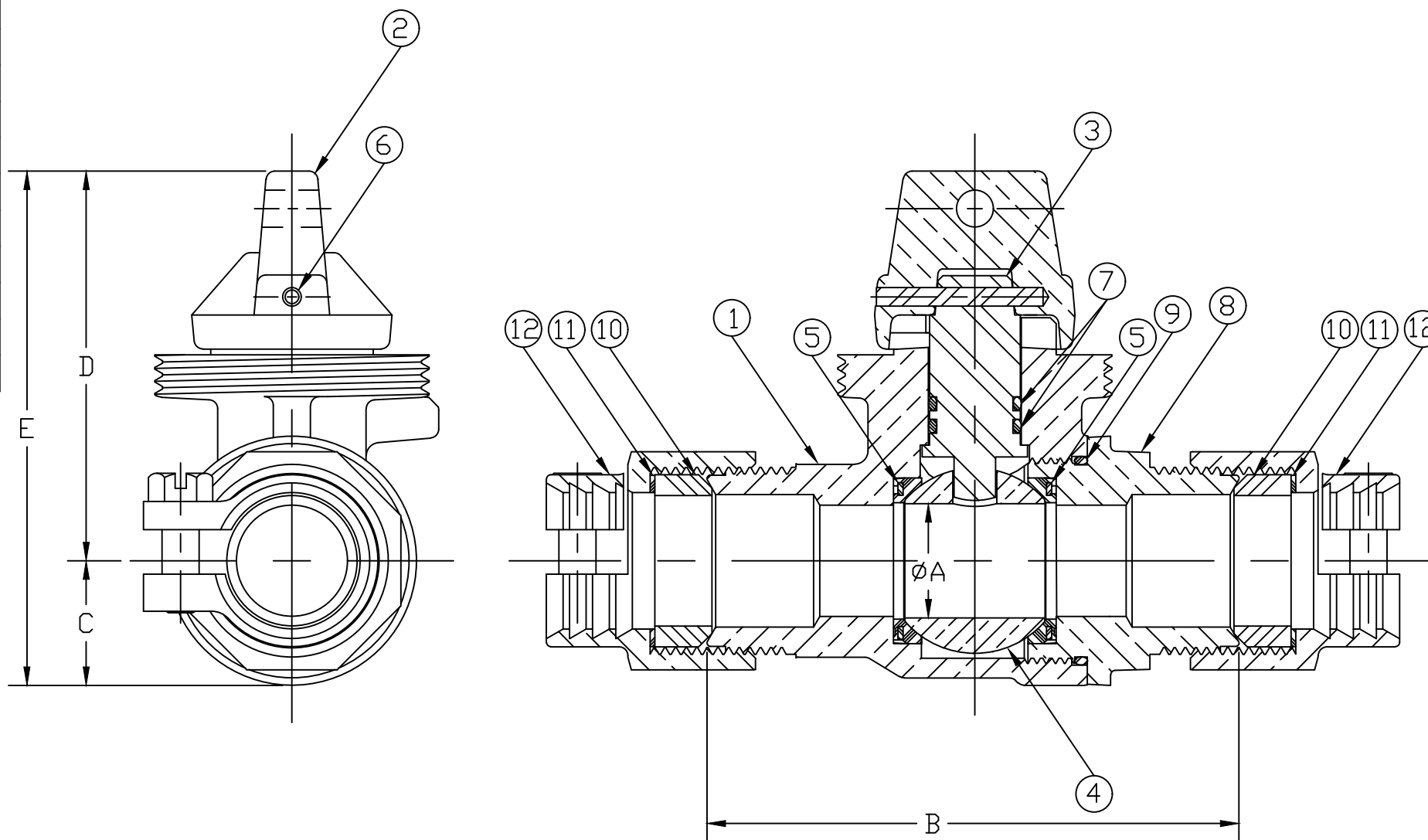


No.	DESCRIPTION	REQ'D	MATERIAL DESCRIPTION
1	BODY	1	CAST NO LEAD BRASS ALLOY
2	CAP	1	CAST BRASS ASTM B62 ALLOY C83600
3	STEM	1	NO LEAD BRASS ALLOY
4	BALL	1	NO LEAD BRASS ALLOY
5	GASKET	2	ASTM D2000 EPDM
6	SOLID PIN	1	AISI 303 STAINLESS STEEL
7	O-RING	2	ASTM D2000 EPDM
8	END PIECE	1	CAST NO LEAD BRASS ALLOY
9	O-RING	1	ASTM D2000 EPDM
10	PJ GASKET	2	ASTM D2000 EPDM
11	WASHER	2	POLYPROPYLENE
12	CLPG NUT SUB	2	CAST BRASS ASTM B62 ALLOY C83600

SIZE	ØA	B	C	D	E
3/4"	.75	3.35	.84	2.62	3.47
1"	1.00	4.48	1.15	2.82	3.97
1-1/2"	1.50	5.06	1.50	3.44	4.94
2"	2.00	5.50	1.82	3.77	5.59



ALL WETTED PARTS ARE NO LEAD BRASS ALLOY

FILEPATH: PROD-ENG\MUELLER\APPROVED\P25155N

						DRFTR	RWB	9/15/14	<b>MUELLER</b>	UNLESS OTHERWISE NOTED THIRD ANGLE PROJECTION SURFACE PREPARATION: BREAK CORNER(S) ---- .000 SURFACE FINISH --XXX RMS TOLERANCE(S): LINEAR ----- ± .000 ANGULAR ----- ± 0°00'	REF. No.	SCALE FULL
						CHKR						
						ENGR						
						MGR						
							BY	DATE	STK No:			
									MAT'L:			
									DESCR.	INLINE MINN TOP NLB BALL CURB VALVE PJ x PJ CONNX ASSEMBLY		DWG NUMBER P25155N
									PER EST NO: DXXXX EST FIN WT = 0.0000 lbs			

DWG NUMBER  
P25155  
MRKTNG

TITLE TO AND OWNERSHIP OF THIS ENGINEERING DATA REMAINS IN Mueller Co. NO USE IS TO BE MADE OF THIS DATA EXCEPT AS SPECIFICALLY AUTHORIZED BY Mueller Co. ASSENT ON THE PART OF THE RECIPIENT TO THESE CONDITIONS IS PRESUMED