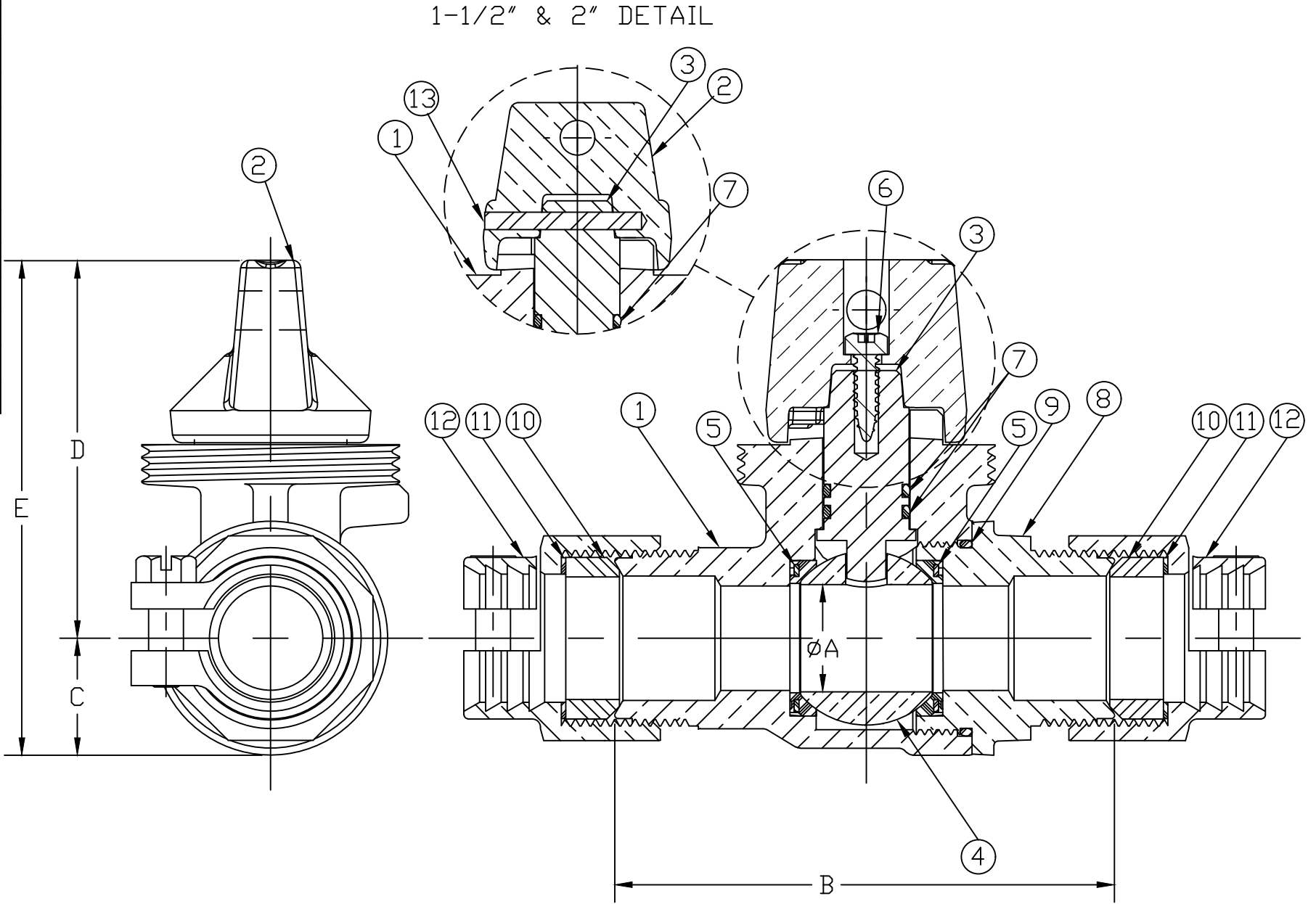


No.	DESCRIPTION	REQ'D	MATERIAL DESCRIPTION
1	BODY	1	LEAD FREE BRASS ALLOY ASTM B584
2	CAP	1	CAST BRASS ALLOY ASTM B584
3	STEM	1	LEAD FREE BRASS ALLOY ASTM B584/B371
4	BALL	1	LEAD FREE BRASS ALLOY ASTM B584
5	GASKET	2	EPDM D2000
6	SCREW	1	18-8 STAINLESS STEEL
7	O-RING	2	EPDM D2000
8	END PIECE	1	LEAD FREE BRASS ALLOY ASTM B584
9	O-RING	1	EPDM D2000
10	PJ GASKET	2	BUNA N ASTM D2000
11	WASHER	2	POLYPROPYLENE
12	CLPG NUT SUB	2	CAST BRASS ALLOY ASTM B584
1-1/2" & 2" ONLY			
13	SOLID PIN		AISI 303 STAINLESS STEEL

SIZE	ØA	B	C	D	E
3/4"	.75	3.35	.84	2.62	3.47
1"	1.00	4.48	1.15	2.82	3.97
1-1/2"	1.50	5.06	1.50	3.44	4.94
2"	2.00	5.50	1.82	3.77	5.59



MEETS ALL REQUIREMENTS OF AWWA C800  
 ALL STEMS ARE LEAD FREE BRASS ALLOY C89833/C69300  
 ALL WETTED PARTS ARE LEAD FREE BRASS ALLOY C89833/C87850  
 ALL NON WETTED PARTS ARE BRASS ALLOY C83600/C87850

DWG NUMBER  
P25155

TITLE TO AND OWNERSHIP OF THIS ENGINEERING DATA REMAINS IN Mueller Co. NO USE IS TO BE MADE OF THIS DATA EXCEPT AS SPECIFICALLY AUTHORIZED BY Mueller Co. ASSENT ON THE PART OF THE RECIPIENT TO THESE CONDITIONS IS PRESUMED

DRFTR	AD	03/10/23	<b>MUELLER</b>	
CHKR			UNLESS OTHERWISE NOTED SURFACE PREPARATION: BREAK CORNER(S) ---- .000 SURFACE FINISH --XXX RMS	THIRD ANGLE PROJECTION
ENGR				REF. No.
MGR			TOLERANCE(S): LINEAR ----- ± .000 ANGULAR ----- ± 0°00'	FULL
BY	DATE			
STK No:				
MAT'L:				
DESCR.	INLINE MINN TOP BALL CURB VALVE PJ x PJ CONNX ASSEMBLY			DWG NUMBER P25155N