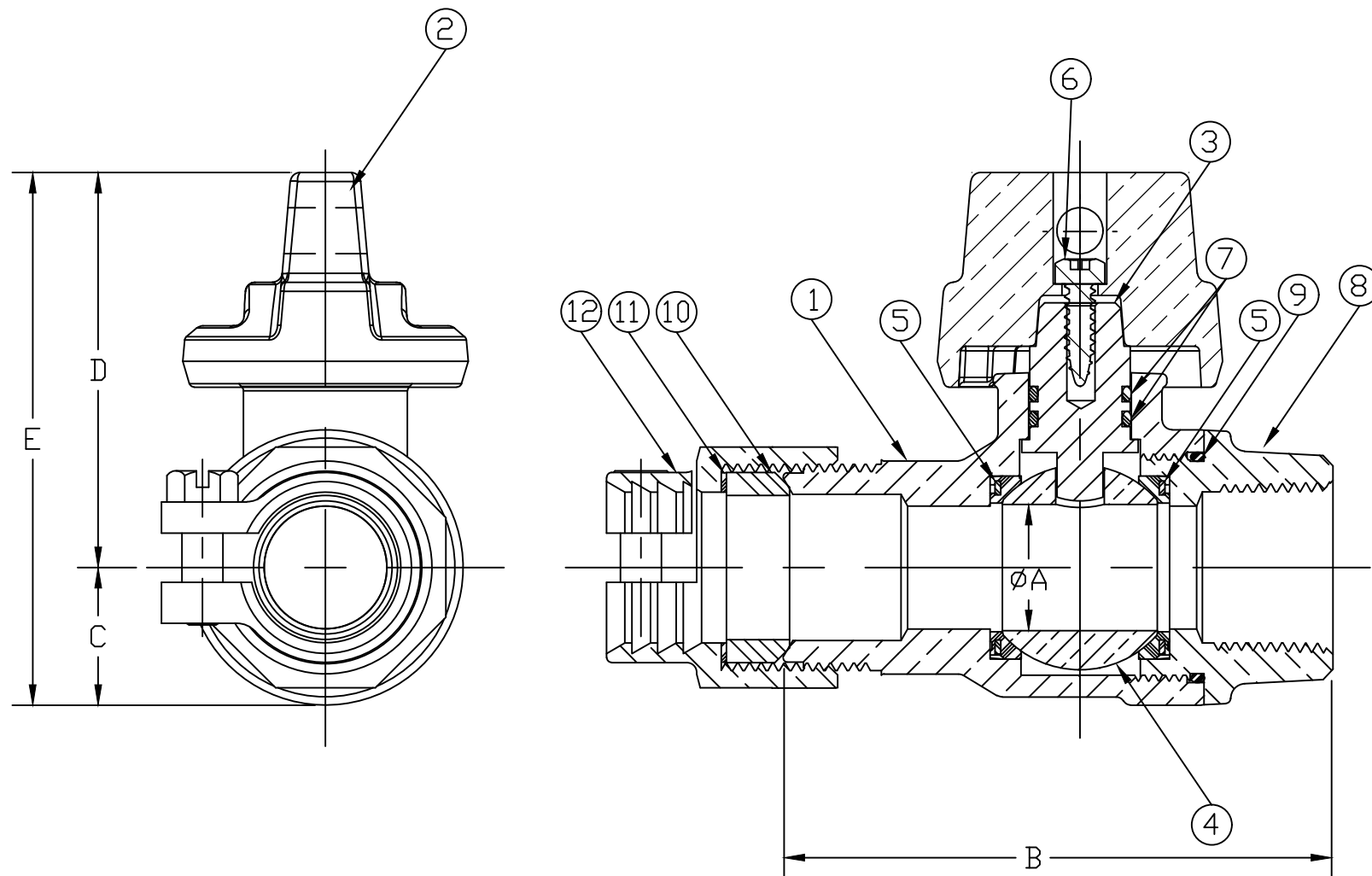


No.	DESCRIPTION	REQ'D	MATERIAL DESCRIPTION
1	BODY	1	LEAD FREE BRASS ALLOY ASTM B584
2	CAP	1	CAST BRASS ALLOY ASTM B584
3	STEM	1	LEAD FREE BRASS ALLOY ASTM B584/B371
4	BALL	1	LEAD FREE BRASS ALLOY ASTM B584
5	GASKET	2	EPDM D2000
6	SCREW	1	18-8 STAINLESS STEEL
7	O-RING	2	EPDM D2000
8	END PIECE	1	LEAD FREE BRASS ALLOY ASTM B584
9	O-RING	1	EPDM D2000
10	PJ GASKET	1	ASTM D2000 (BUNA N)
11	WASHER	1	POLYPROPYLENE
12	CLPG NUT SUB	1	CAST BRASS ALLOY ASTM B584

SIZE	ØA	B	C	D	E
3/4"R	.63	3.21	.75	2.41	3.16
3/4"	.75	3.36	.84	2.72	3.56
1"	1.00	4.51	1.15	2.86	4.01
1-1/2"	1.50	4.69	1.50	3.66	5.16
2"	2.00	5.22	1.82	4.21	6.03



MEETS ALL REQUIREMENTS OF AWWA C800
 ALL STEMS ARE LEAD FREE BRASS ALLOY C89833/C69300
 ALL WETTED PARTS ARE LEAD FREE BRASS ALLOY C89833/C87850
 ALL NON WETTED PARTS ARE BRASS ALLOY C83600/C87850

DWG NUMBER
P25172N

TITLE TO AND OWNERSHIP OF THIS ENGINEERING
 DATA REMAINS IN Mueller Co. NO USE IS TO BE
 MADE OF THIS DATA EXCEPT AS SPECIFICALLY
 AUTHORIZED BY Mueller Co. ASSENT ON THE PART
 OF THE RECIPIENT TO THESE CONDITIONS IS PRESUMED

DRFTR	AD	03/10/23	MUELLER	
CHKR				
ENGR			UNLESS OTHERWISE NOTED	THIRD ANGLE PROJECTION
MGR				SURFACE PREPARATION: BREAK CORNER(S) ---- .000 SURFACE FINISH --XXX RMS
	BY	DATE	TOLERANCE(S): LINEAR ----- ± .000 ANGULAR ----- ± 0°00'	SCALE
STK No:				FULL
MAT'L:				
DESCR.			INLINE BALL CURB VALVE PJ CTS x FIP CONNX ASSEMBLY	DWG NUMBER P25172N