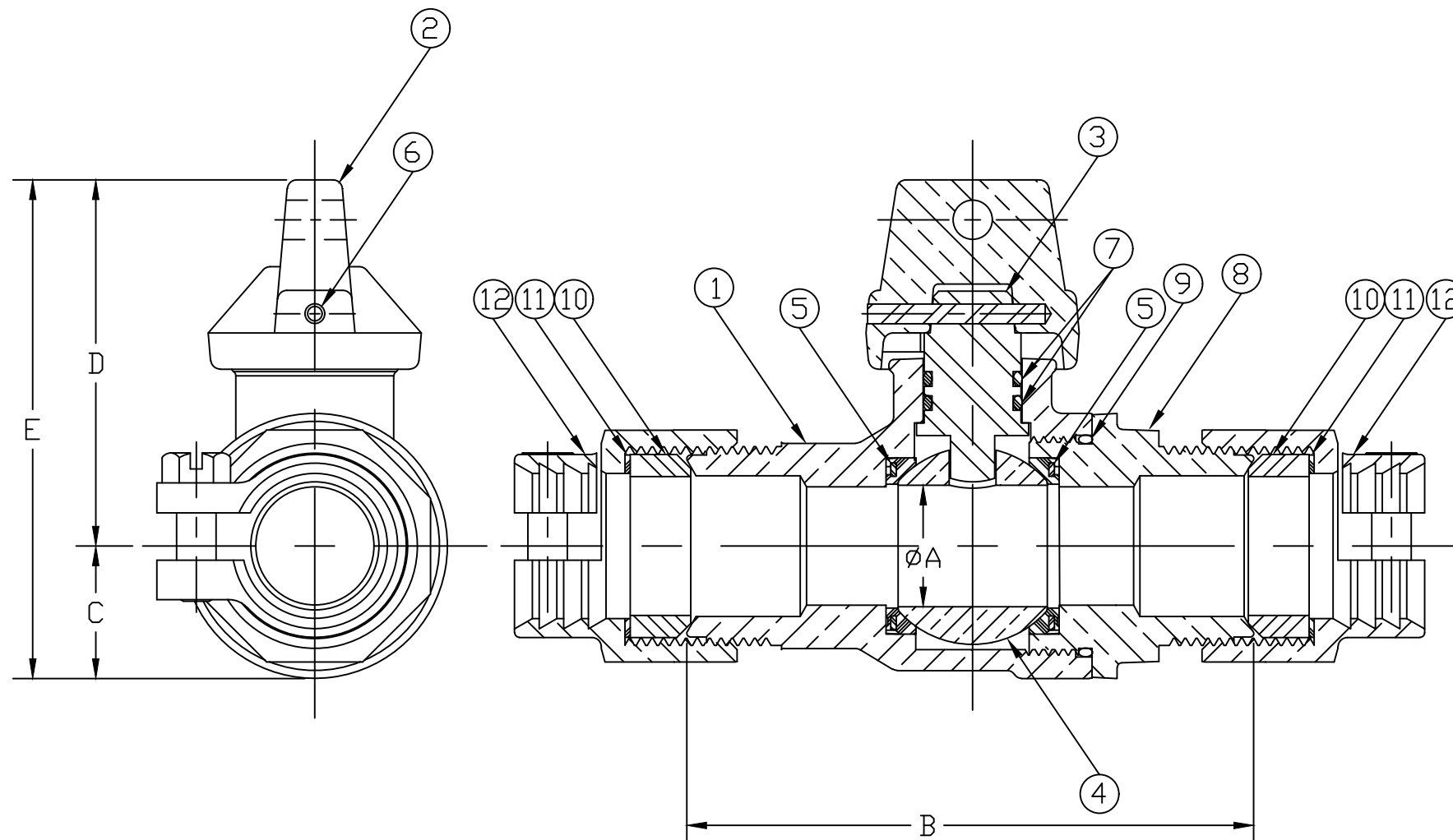


No.	DESCRIPTION	MATERIAL DESCRIPTION
1	BODY	CAST NO LEAD BRASS ALLOY
2	CAP	CAST BRASS ASTM B62 ALLOY C83600
3	STEM	NO LEAD BRASS ALLOY
4	BALL	NO LEAD BRASS ALLOY
5	GASKET	ASTM D2000 (NITRILE)
6	SOLID PIN	AISI 303 STAINLESS STEEL
7	O-RING	ASTM D2000 (EP)
8	END PIECE	CAST NO LEAD BRASS ALLOY
9	O-RING	ASTM D2000 (EP)
10	PJ GASKET	ASTM D2000 (BUNA N)
11	WASHER	POLYPROPYLENE
12	CLPG NUT SUB	CAST BRASS ASTM B62 ALLOY C83600

SIZE	ØA	B	C	D	E
3/4"R	.63	3.44	.75	2.12	2.87
3/4"	.75	3.59	.84	2.12	2.96
1"R	.75	4.00	.84	2.12	2.96
1"	1.00	5.03	1.15	2.32	3.47
1 1/2"	1.50	5.06	1.50	3.37	4.87
2"	2.00	5.52	1.82	3.92	5.74



ALL WETTED PARTS ARE NO LEAD BRASS ALLOY

FILEPATH: PROD-ENG\MUELLER\ASYSUBMITTALS\P25209N

DRFTR	JGarvin	7/17/12	MUELLER		
CHKR					
ENGR					
MGR					
			UNLESS OTHERWISE NOTED	THIRD ANGLE PROJECTION	
			SURFACE PREPARATION:		
			BREAK CORNER(S) ---- .000		
			SURFACE FINISH --XX RMS	REF. No.	
			TOLERANCE(S):	SCALE	
			LINEAR ----- ± .000	FULL	
			ANGULAR ----- ± 0°00'		
			STK No:		
			MAT'L:		
			DESCR.	DWG NUMBER	
			INLINE NLB BALL CURB VALVE	P25209N	
			(PJ x PJ)		
REV	ECR	DESCRIPTION	DATE	BY	CHKR
PER EST NO: DXXXX EST FIN WT = 0.0000 lbs					

DWG NUMBER
P25209N
442-MRKTG

TITLE TO AND OWNERSHIP OF THIS ENGINEERING DATA REMAINS IN Mueller Co. NO USE IS TO BE MADE OF THIS DATA EXCEPT AS SPECIFICALLY AUTHORIZED BY Mueller Co. ASSENT ON THE PART OF THE RECIPIENT TO THESE CONDITIONS IS PRESUMED