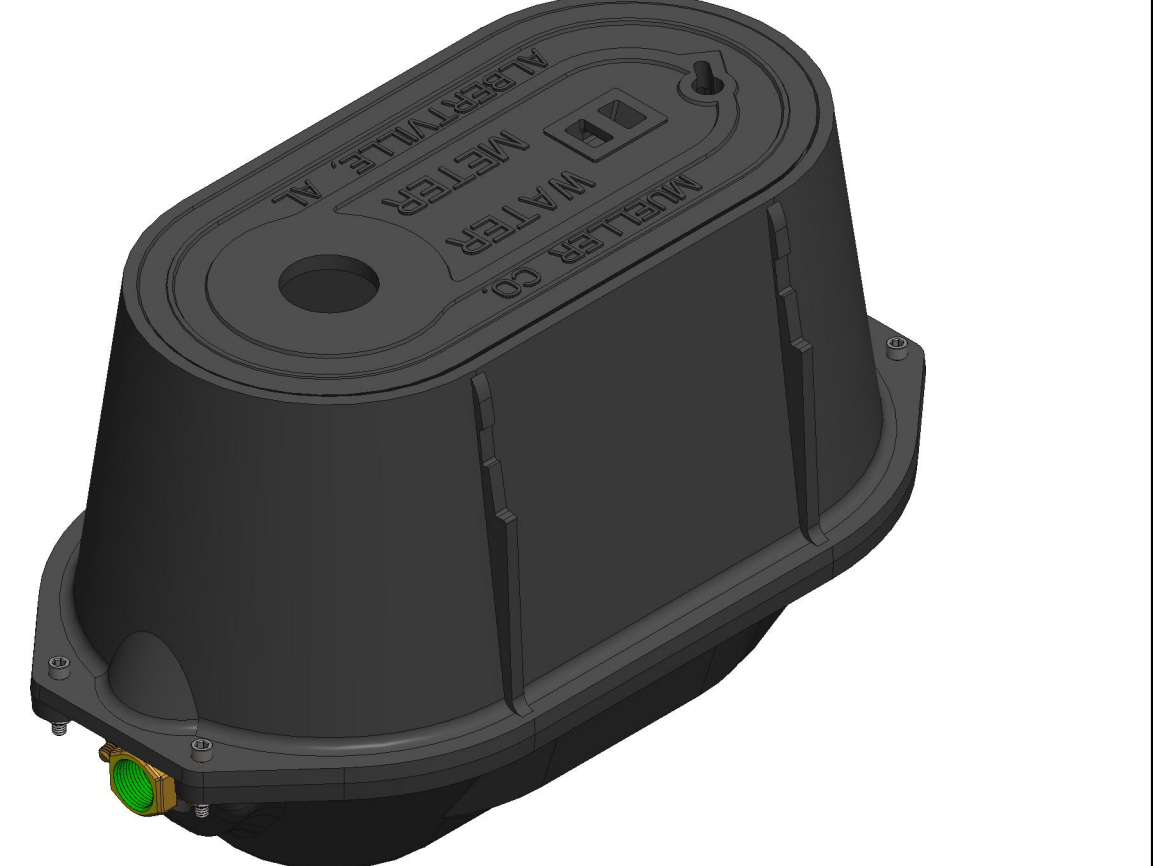
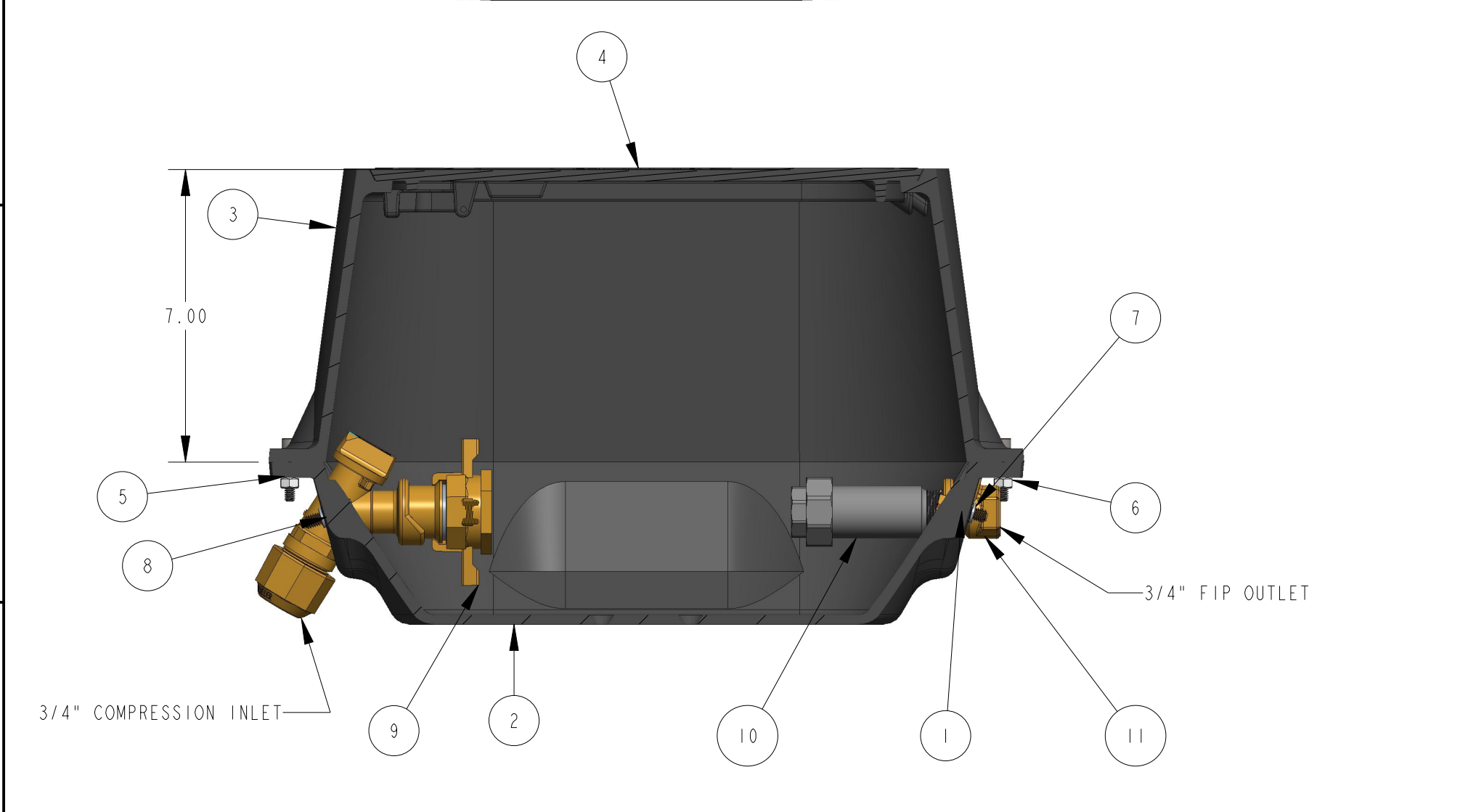


ITEM NO	PART NUMBER	QTY	DESCRIPTION	MATERIAL
1	504041	4	HEX CAP SCREW	YELLOW BRASS ASTM B134 ALLOY C26000
2	532208_REV-C	1	STRETCH BASE TRAY CASTING	CAST IRON ASTM A48 CLASS 25
3	532209_REV-B	1	STRETCH BOX UPPER SECTION	CAST IRON ASTM A48 CLASS 25
4	532224	1	TOUCH READ LID	CAST IRON ASTM A48 CLASS 25
5	544622	4	MACHINE SCREW	STAINLESS STEEL
6	544623	4	HEX NUT	STAINLESS STEEL
7	544631	4	1/4" LOCK WASHER 304SS	STAINLESS STEEL
8	089808N	1	5/8" X 3/4" INLET METER VALVE	LEAD FREE BRASS ALLOY ASTM B584 C89833/87850
9	250H14234N	1	3/4" HANDWHEEL EXPANSION	LEAD FREE BRASS ALLOY ASTM B584 C89833/C87850
10	311930E	1	Two-Stage Backflow-Prevention Valve	LOW LEAD CAST BRONZE ASTM B584
11	508563E	1	3/4" INSIDE IP THREAD OUTLET	LEAD FREE BRASS ALLOY ASTM B584 C89833/C87850



REVISIONS					
REV	ECR	DESCRIPTION	DRAWN BY	DATE	APPROVED
A		RELEASE	JBK	2/2/24	

TITLE TO AND OWNERSHIP OF THIS ENGINEERING DATA REMAINS IN Mueller Co. ASSENT ON THE PART OF THE RECIPIENT TO THESE CONDITIONS IS PRESUMED.

INTERPRET THIS DRAWING IN ACCORDANCE WITH ASME Y14.5 2018		NAME	DATE	THIRD ANGLE PROJECTION	
UNLESS OTHERWISE SPECIFIED DIMENSIONS ARE IN INCHES. MACHINING TOLERANCES:		DRAWN BY	Feb-02-24		
X ±.1	XX ±.015	D.E. APPR.		TITLE:	
XXX ±.005		M.E. APPR.		5/8" X 3/4" CAST IRON METER BOX	
ANGULAR CORNER BREAK FINISH ±1" .015/.025 125 µin. RA		Q.A. APPR.		7" HEIGHT	
DO NOT SCALE DRAWING				LOW LEAD BRASS	
MATERIAL:		DO NOT SCALE DRAWING		SIZE	DWG. NUMBER
STK NUMBER:		DO NOT SCALE DRAWING		B	234H1462-3-16N
REF.NO.		DO NOT SCALE DRAWING		REV	A
SCALE: 0.300		WT:		SHEET 1 OF 1	