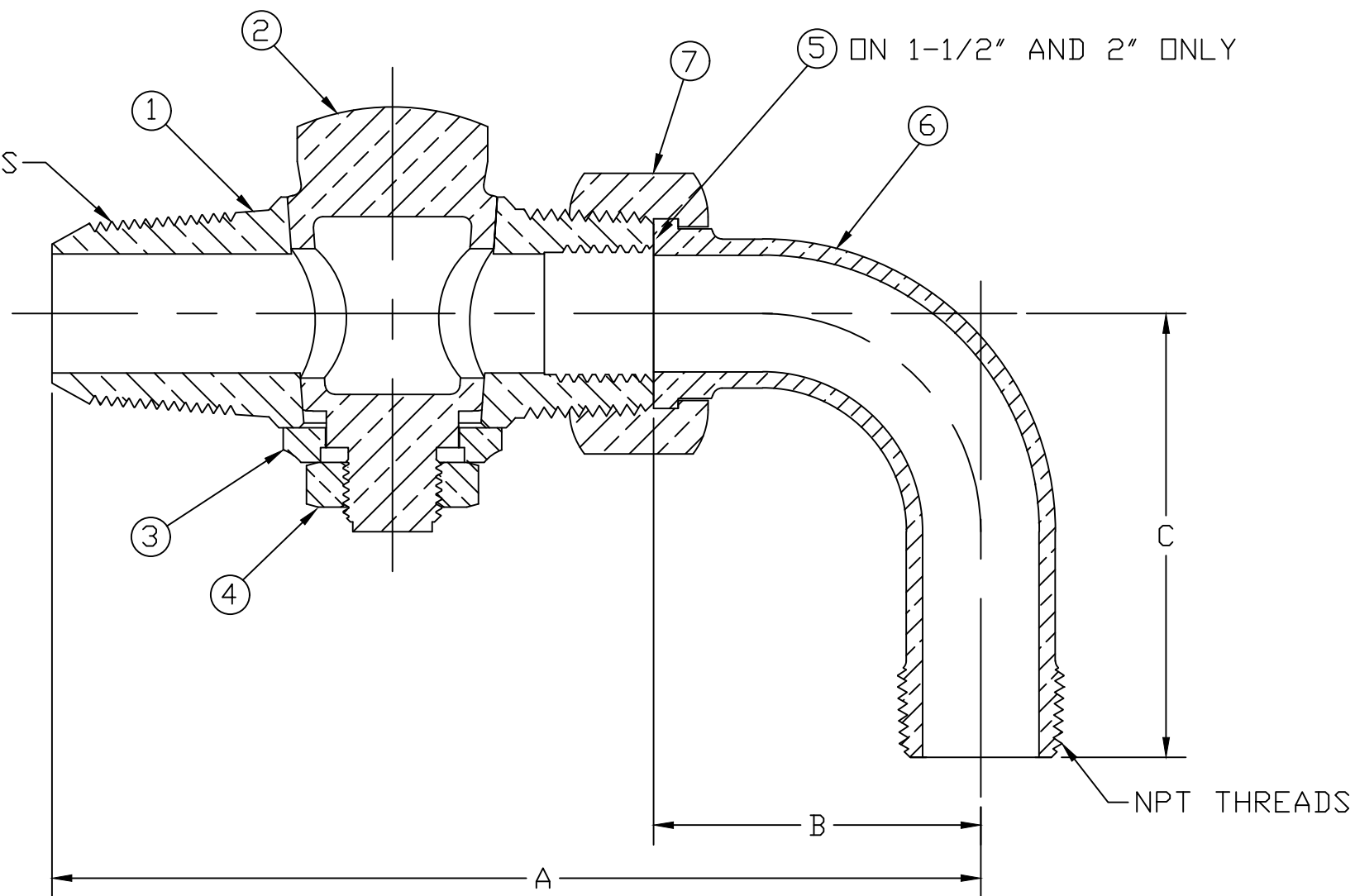


No.	DESCRIPTION	REQ'D	MATERIAL DESCRIPTION
1	BODY	1	LEAD FREE BRASS ALLOY ASTM B584
2	KEY	1	LEAD FREE BRASS ALLOY ASTM B584
3	KEY WASHER	1	CAST BRASS ALLOY ASTM B584
4	KEY NUT	1	CAST BRASS ASTM B62 ALLOY C83600
5	FIBER GASKET	1	ASTM D710 (VULCANIZED FIBER)
6	TAILPIECE	1	LEAD FREE BRASS ALLOY ASTM B584
7	COUPLING NUT	1	CAST BRASS ALLOY ASTM B584

VALVE SIZE	DIM "A"	DIM "B"	DIM "C"
3/4"	5.85	2.06	2.80
1"	6.78	2.39	2.56
1-1/2"	8.94	2.84	3.81
2"	10.42	3.23	4.33

MUELLER CC THREADS



MEETS ALL REQUIREMENTS OF AWWA C800
 ALL WETTED PARTS ARE LEAD FREE BRASS ALLOY C89833/C87850
 ALL NON WETTED PARTS ARE BRASS ALLOY C83600/C87850

DRFTR	AD	02/02/23	MUELLER	
CHKR				
ENGR			UNLESS OTHERWISE NOTED	THIRD ANGLE PROJECTION
MGR				SURFACE PREPARATION: BREAK CORNER(S) ---- .000 SURFACE FINISH -- XX RMS
	BY	DATE	TOLERANCE(S): LINEAR ----- ± .000 ANGULAR ----- ± 0°00'	SCALE
STK No:				FULL
MAT'L:				
DESCR.			DWG NUMBER	
CORPORATION STOP W/ QUARTER BEND			H1000302N	

TITLE TO AND OWNERSHIP OF THIS ENGINEERING DATA REMAINS IN Mueller Co. NO USE IS TO BE MADE OF THIS DATA EXCEPT AS SPECIFICALLY AUTHORIZED BY Mueller Co. ASSENT ON THE PART OF THE RECIPIENT TO THESE CONDITIONS IS PRESUMED

DWG NUMBER
H1000302N