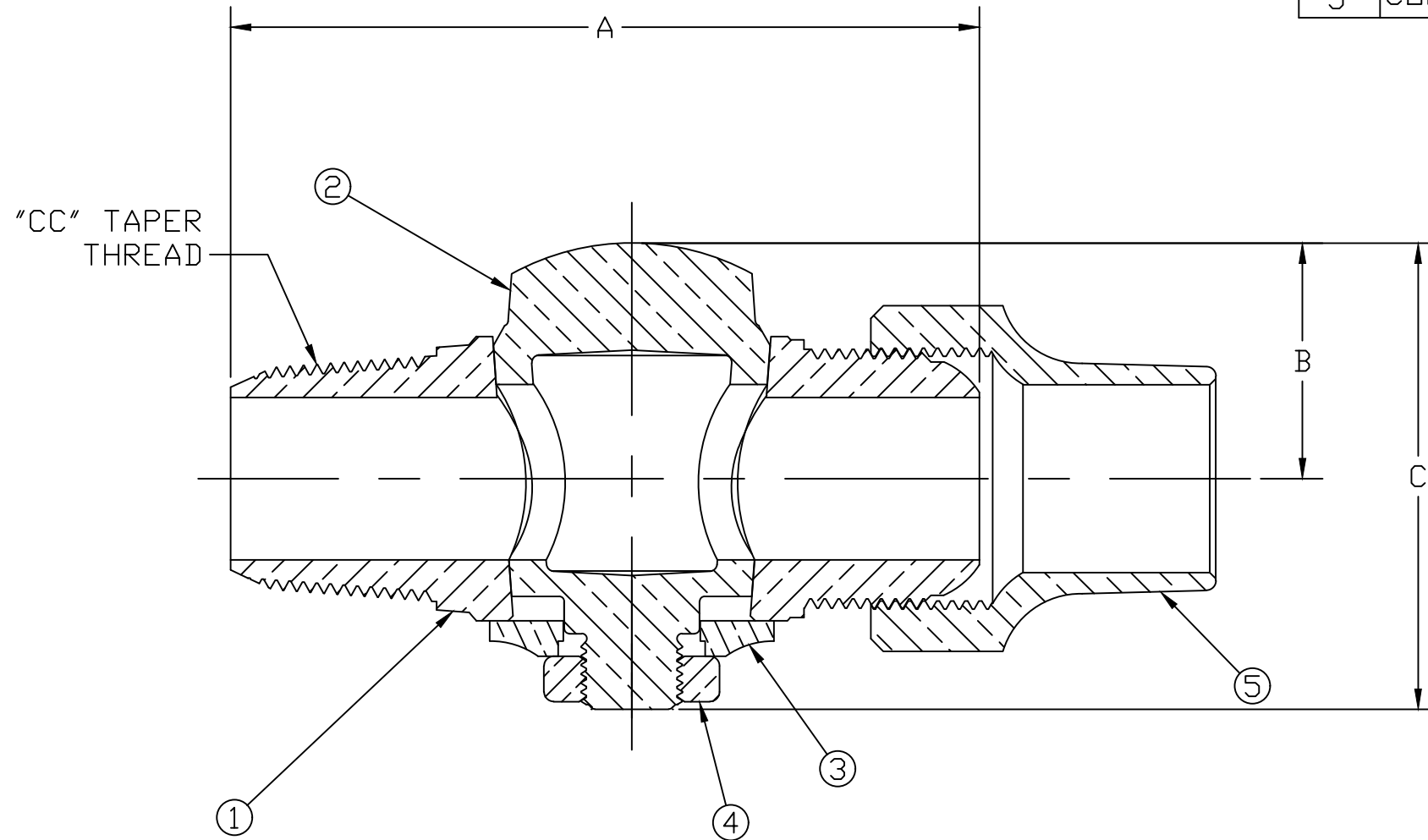


No.	DESCRIPTION	MATERIAL
1	BODY	LEAD FREE BRASS ALLOY ASTM B584
2	KEY	LEAD FREE BRASS ALLOY ASTM B584
3	KEY WASHER	CAST BRASS ALLOY ASTM B584
4	KEY NUT	CAST BRASS ASTM B62 ALLOY C83600
5	COPPER TUBE NUT	CAST BRASS ALLOY ASTM B584



SIZE	A	B	C
1/2	3.45	1.14	2.30
5/8	3.53	1.20	2.50
5/8x3/4	3.50	1.20	2.50
3/4	3.84	1.30	2.68
3/4 x 1	4.02	1.30	2.68
1	4.61	1.41	2.87
1 1/4	5.55	1.80	3.80
1 1/2	6.36	2.16	4.84
1 1/2 x 2	6.64	2.16	4.84
2	7.53	2.36	4.83

MEETS ALL REQUIREMENTS OF AWWA C800  
 ALL WETTED PARTS ARE LEAD FREE BRASS ALLOY C89833/C87850  
 ALL NON WETTED PARTS ARE BRASS ALLOY C83600/C87850

DRFTR	AD	02/06/23	<b>MUELLER</b>	
CHKR				
ENGR			UNLESS OTHERWISE NOTED SURFACE PREPARATION: BREAK CORNER(S) ---- .000 SURFACE FINISH -- XX RMS TOLERANCE(S): LINEAR ----- ± .000 ANGULAR ----- ± 0°00'	THIRD ANGLE PROJECTION
MGR				REF. No.
	BY	DATE		FULL
STK No:				
MAT'L:				
DESCR.			CORPORATION STOP ("CC" TAPER x CS)	DWG NUMBER H15000N

DWG NUMBER  
H15000N

TITLE TO AND OWNERSHIP OF THIS ENGINEERING  
 DATA REMAINS IN Mueller Co. NO USE IS TO BE  
 MADE OF THIS DATA EXCEPT AS SPECIFICALLY  
 AUTHORIZED BY Mueller Co. ASSENT ON THE PART  
 OF THE RECIPIENT TO THESE CONDITIONS IS PRESUMED