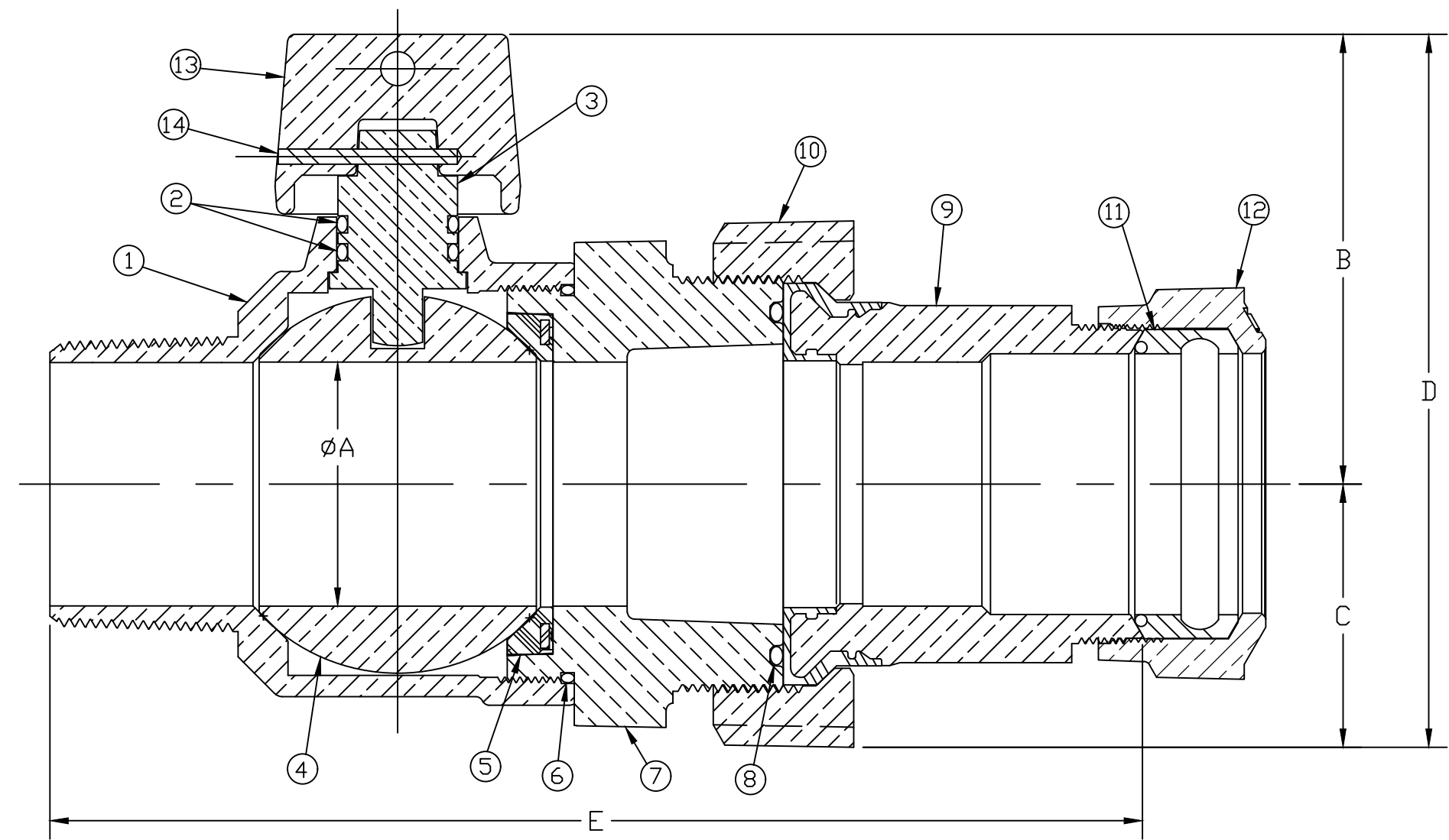


TITLE TO AND OWNERSHIP OF THIS ENGINEERING DATA REMAINS IN Mueller Co. NO USE IS TO BE MADE OF THIS DATA EXCEPT AS SPECIFICALLY AUTHORIZED BY Mueller Co. ASSENT ON THE PART OF THE RECIPIENT TO THESE CONDITIONS IS PRESUMED



SIZE	ØA	B	C	D	E
3/4"	.750	2.245	1.078	3.330	5.599
1"	1.000	2.425	1.353	3.713	6.334
2"	2.000	3.702	2.165	5.868	8.988

MEETS ALL REQUIREMENTS OF AWWA C800
 ALL STEMS ARE LEAD FREE BRASS ALLOY C89833/C69300
 ALL WETTED PARTS ARE LEAD FREE BRASS ALLOY C89833/C87850
 ALL NON WETTED PARTS ARE BRASS ALLOY C83600/C87850

No.	DESCRIPTION	MATERIAL
1	BODY	LEAD FREE BRASS ALLOY ASTM B584
2	O-RING	EPDM D2000
3	STEM	LEAD FREE BRASS ALLOY ASMT B584/B371
4	BALL	LEAD FREE BRASS ALLOY ASTM B584
5	GASKET	EPDM D2000
6	O-RING	EPDM D2000
7	END PIECE	LEAD FREE BRASS ALLOY ASTM B584
8	O-RING	EPDM D2000
9	INS. TAILPC ASS'Y	LEAD FREE BRASS ALLOY ASTM B584 w/ MOLDED NYLON
10	COUP. NUT	CAST BRASS ALLOY ASTM B584
11	CTS GSKT ASSY	SBR RUBBER ASTM D2000
12	CONN NUT	CAST BRASS ALLOY ASTM B584
13	CAP	CAST BRASS ALLOY ASTM B584
14	ROLLPIN	ASTM A240 STAINLESS STEEL

DWG NUMBER
N3502810N

DRFTR	AD	03/09/23	MUELLER	
CHKR				
ENGR			UNLESS OTHERWISE NOTED SURFACE PREPARATION: BREAK CORNER(S) ----- .000 SURFACE FINISH -- XX RMS	THIRD ANGLE PROJECTION
MGR				REF. No.
	BY	DATE	TOLERANCE(S): LINEAR ----- ± .000 ANGULAR ----- ± 0°00'	NONE
STK No:				
MAT'L:				
DESCR.			BALL CORP VALVE W/ CAP AWWA IP x INSULATED TAILPC 110CTS	DWG NUMBER N3502810N