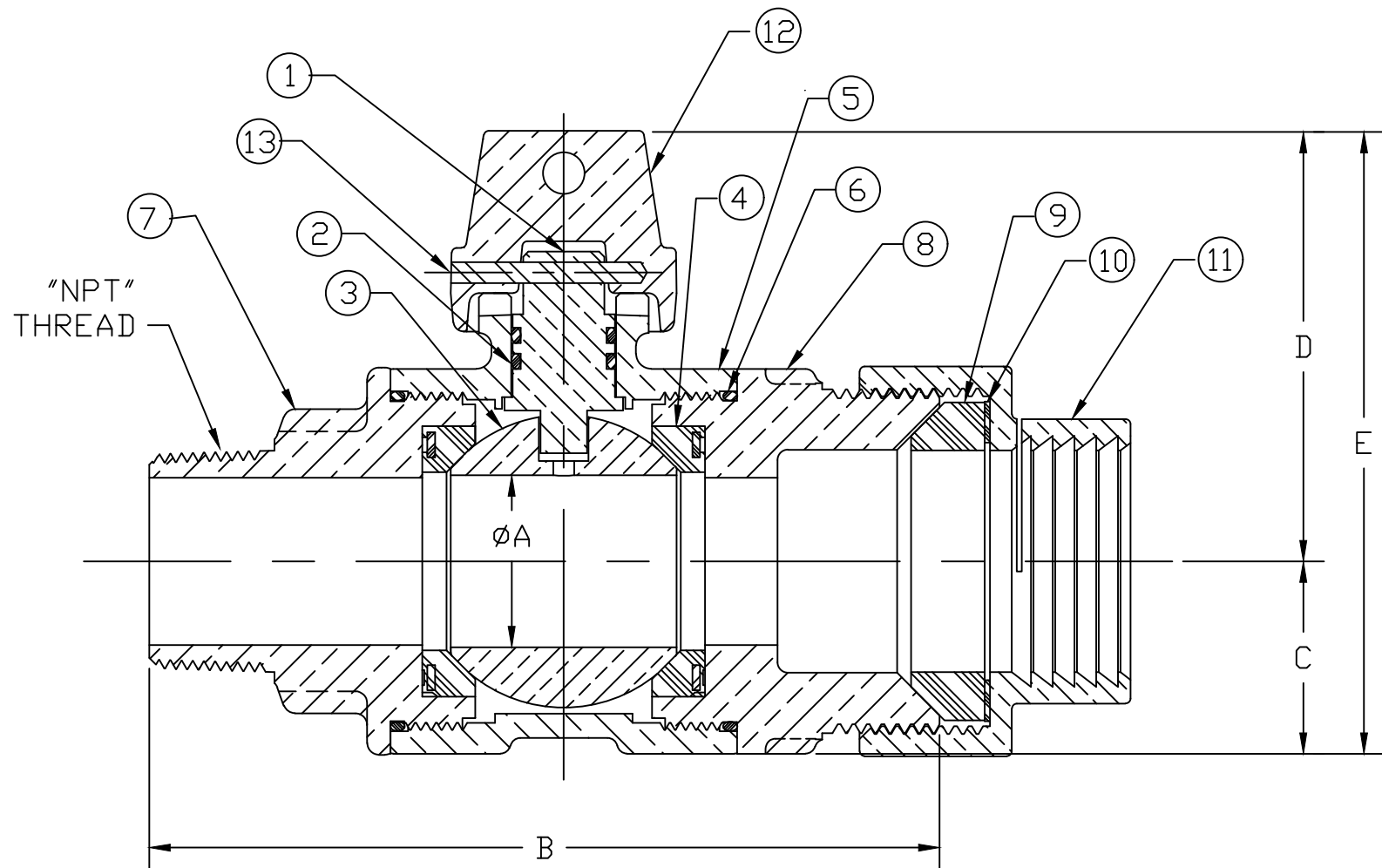
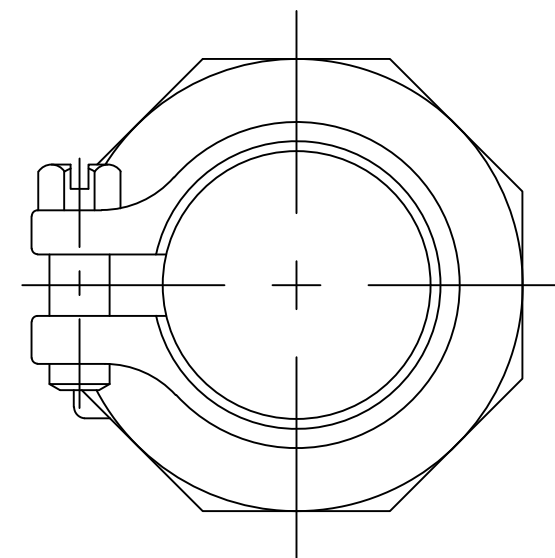


No.	QTY	DESCRIPTION	MATERIAL	No.	QTY	DESCRIPTION	MATERIAL
1	1	STEM	LEAD FREE BRASS ALLOY ASTM B584/B371	9	1	COMP GSKT	NITRILE ASTM D2000
2	2	O-RING	EPDM D2000	10	1	WASHER	POLYPROPYLENE
3	1	BALL	LEAD FREE BRASS ALLOY ASTM B584	11	1	CPLG NUT	CAST BRASS ALLOY ASTM B584
4	2	GASKET - SEAL	EPDM D2000	12	1	CAP	CAST BRASS ALLOY ASTM B584
5	1	BODY	LEAD FREE BRASS ALLOY ASTM B584	13	1	ROLLPIN	ASTM A240 (302) STAINLESS STEEL
6	2	O-RING	EPDM D2000				
7	1	END PIECE	LEAD FREE BRASS ALLOY ASTM B584				
8	1	END PIECE	LEAD FREE BRASS ALLOY ASTM B584				



SIZE	ØA	B	C	D	D
1-1/2"	1.50	5.96	1.50	3.37	4.87
2"	2.00	6.85	1.82	3.92	5.74



MEETS ALL REQUIREMENTS OF AWWA C800  
 ALL STEMS ARE LEAD FREE BRASS ALLOY C89833/C69300  
 ALL WETTED PARTS ARE LEAD FREE BRASS ALLOY C89833/C87850  
 ALL NON WETTED PARTS ARE BRASS ALLOY C83600/C87850

DWG NUMBER  
V25101N

TITLE TO AND OWNERSHIP OF THIS ENGINEERING DATA REMAINS IN Mueller Co. NO USE IS TO BE MADE OF THIS DATA EXCEPT AS SPECIFICALLY AUTHORIZED BY Mueller Co. ASSENT ON THE PART OF THE RECIPIENT TO THESE CONDITIONS IS PRESUMED

DRFTR	AD	03/09/23	<b>MUELLER</b>	
CHKR				
ENGR			UNLESS OTHERWISE NOTED SURFACE PREPARATION: BREAK CORNER(S) ---- .000 SURFACE FINISH -- XX RMS	THIRD ANGLE PROJECTION
MGR				TOLERANCE(S): LINEAR ----- ± .000 ANGULAR ----- ± 0°00'
BY	DATE			SCALE
STK No:				
MAT'L:				
DESCR.	CORPORATION VALVE (MIP x PJ IPS PVC)			DWG NUMBER V25101N