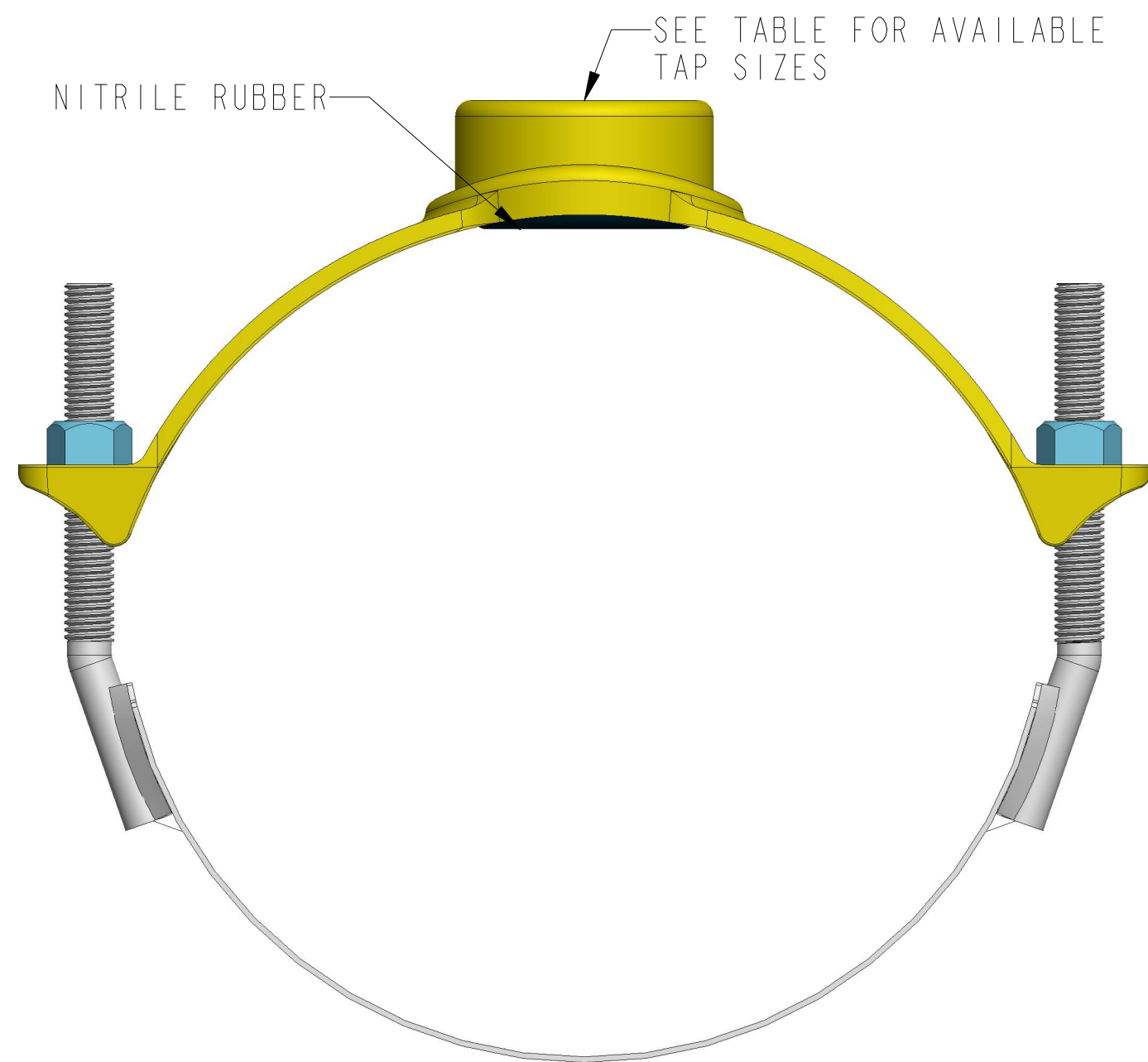
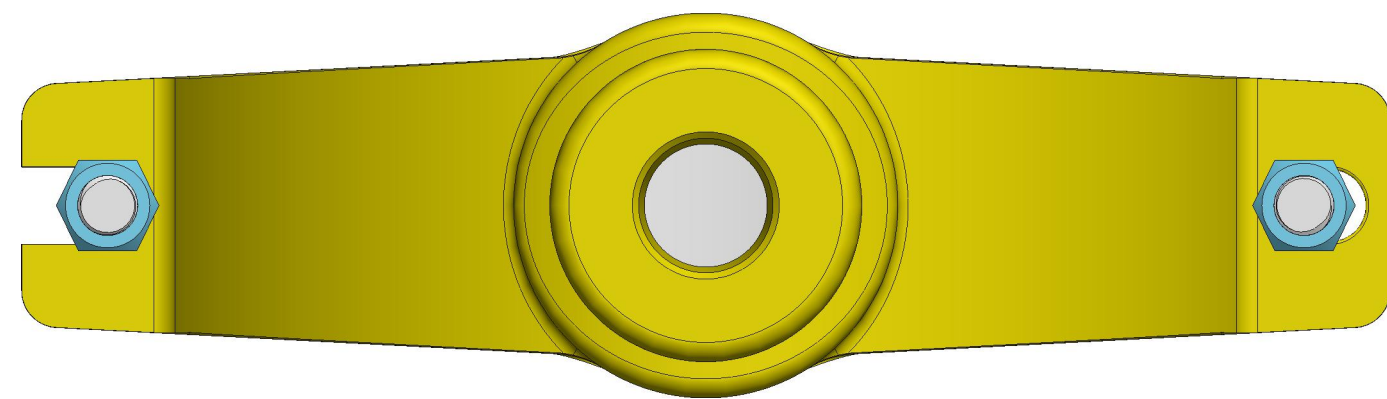


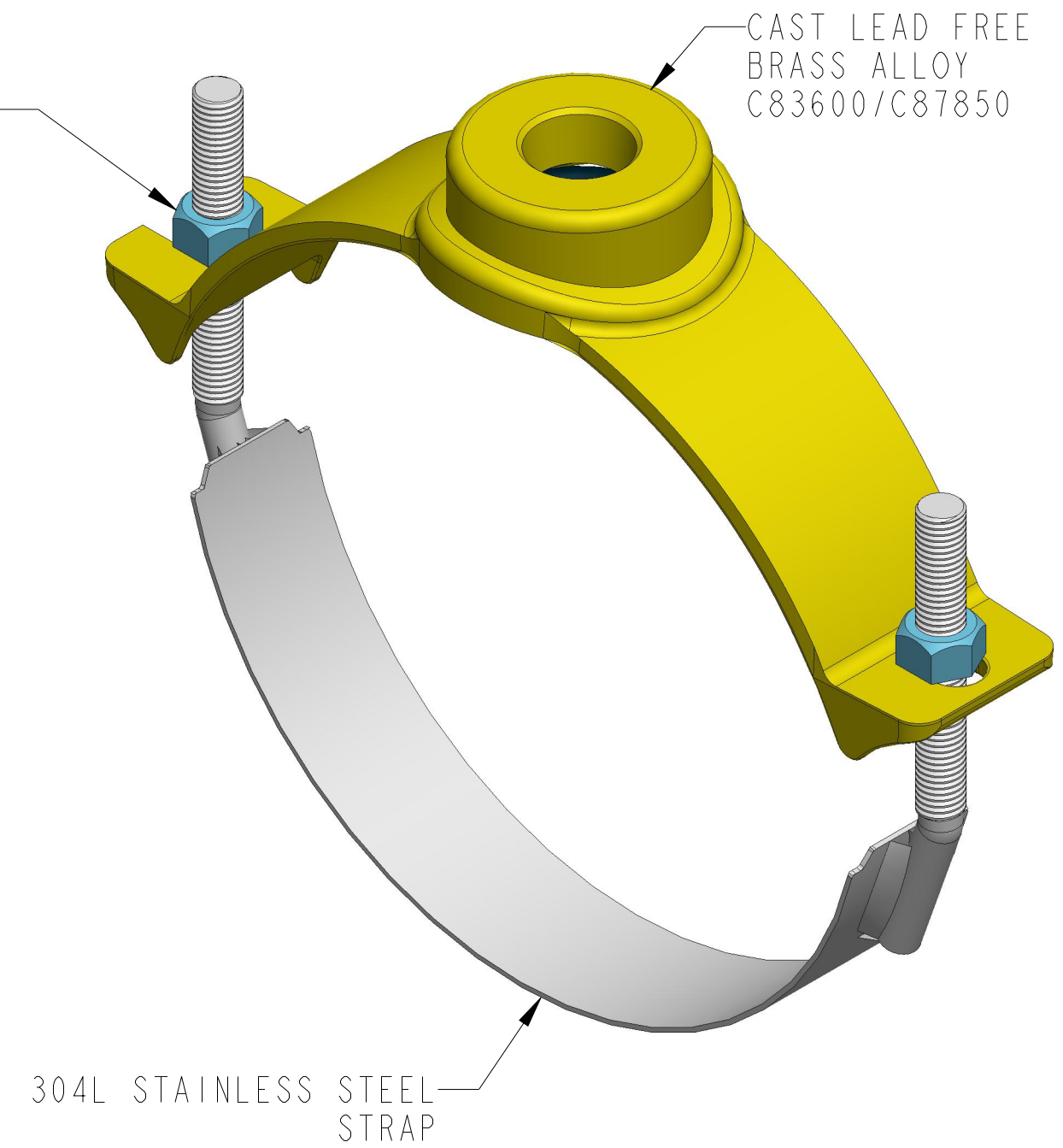
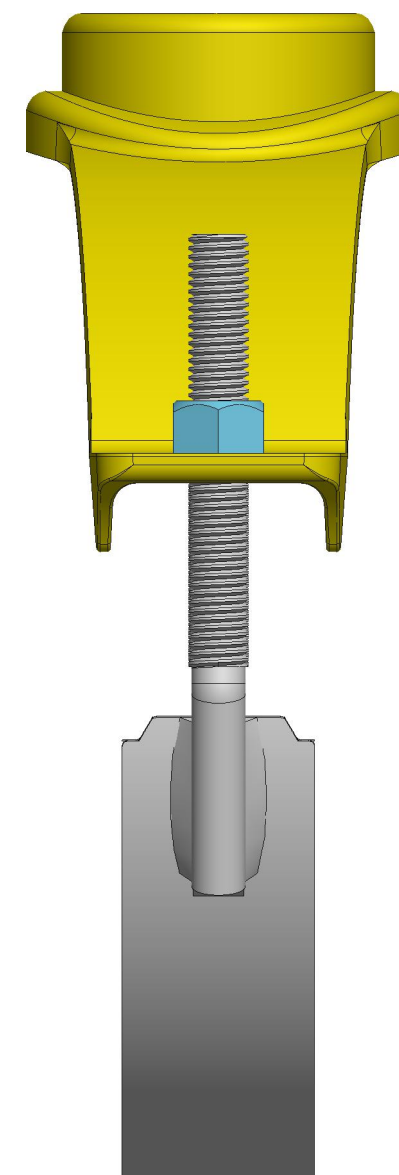
PIPE SIZE	PIPE RANGE	SADDLE I.D.	TYPE	TAP THREAD*	AVAILABLE TAP SIZES						
					1/2"	5/8"	3/4"	1"	1-1/4"***	1-1/2"	2"
4"	4.74-5.32	5.24	BR2S0474	CC OR IP	075	062	075	100			
4"	4.74-5.10	4.80	BR2S0474	CC OR IP					125	150	200
4"	5.10-5.40	5.24	BR2S0510	CC OR IP					125	150	200
6"	6.84-7.45	7.34	BR2S0684	CC OR IP	050	062	075	100	125	150	200
8"	8.99-9.67	9.56	BR2S0899	CC OR IP	050	062	075	100	125	150	200
10"	11.04-12.12	12.12	BR2S1104	CC OR IP	050	062	075	100	125	150	200
12"	13.14-14.58	14.22	BR2S1314	CC OR IP	050	062	075	100	125	150	200

*IP STANDS FOR AWWA I.P. THREAD (F.I.P.T.)
CC STANDS FOR AWWA TAPER THREAD (C.C.)

**1-1/4" ONLY AVAILABLE IN AWWA I.P. THREAD



304 STAINLESS STEEL
TEFLON COATED NUT
OR
CAST BRASS ALLOY C83600 NUT
W/ INTEGRAL WASHER
WITH OPTION FN



DR. BY	AOD	3/24/23	UNLESS OTHERWISE NOTED	THIRD ANGLE PROJECTION		C.B. NO.
CHKR			BREAK CAST CORNER(S)---			
ENGR			BREAK MACH CORNER(S)---	PURCH.	FINISH	PATT. NO.
MGR			TOLERANCES	REF. NO.	SCALE	
MFG			UNLESS OTHERWISE NOTED	STR. NO.		
TOOL			LINEAR	ANGULAR		
FDRY			±	±		
MAT'L: SEE DRAWING CALLOUTS						
MUELLER			DESCR.	NUMBER		
			4"-12" BRIS STYLE SERVICE SADDLE W/ ALL AVAILABLE TAP OPTIONS	BRIS_SUBMITTAL		