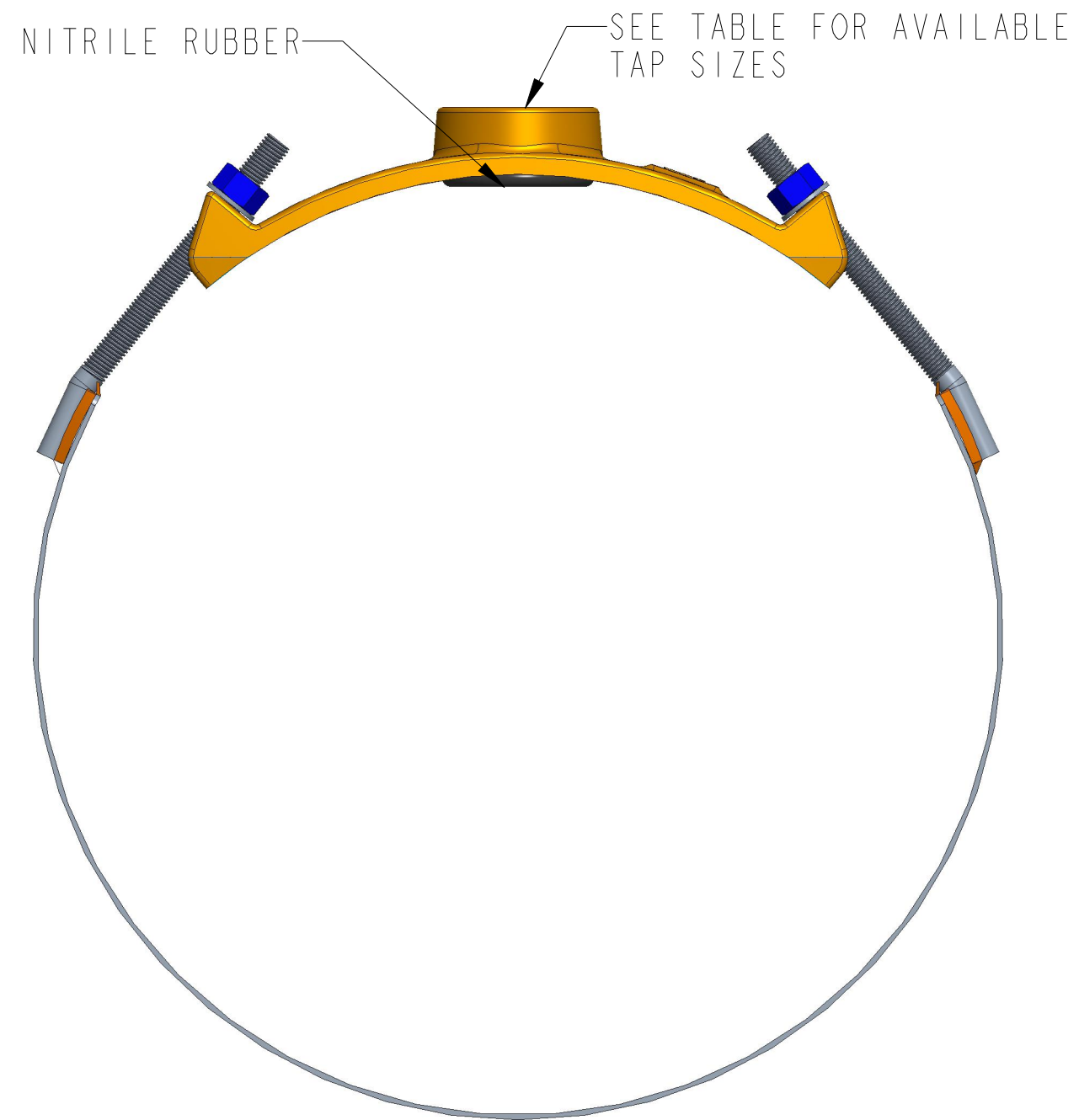
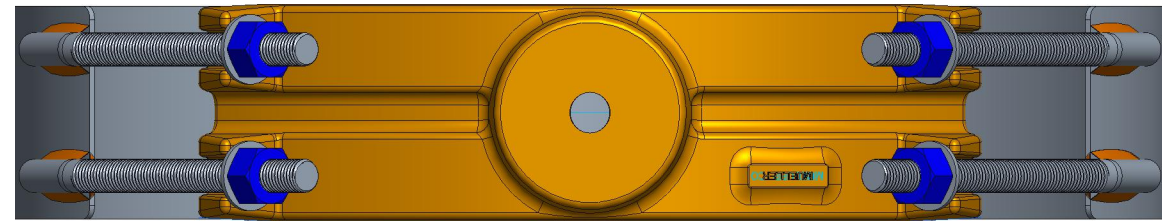


PIPE SIZE	PIPE RANGE	TYPE	TAP THREAD*	AVAILABLE TAP SIZES				
				3/4"	1"	1-1/4"	1-1/2"	2"
18"	18.00-19.50	BR2W1800	CC OR IP	075	100	125	150	200
20"	20.00-21.60	BR2W2000	CC OR IP	075	100	125	150	200
24"	24.00-25.80	BR2W2400	CC OR IP	075	100	125	150	200

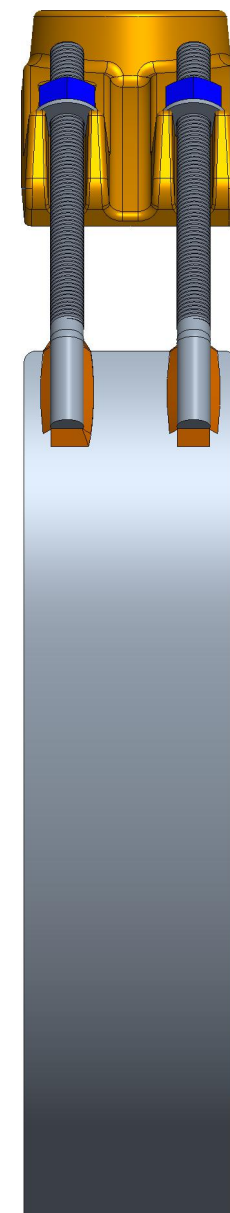
*IP STANDS FOR AWWA I.P. THREAD (F.I.P.T.)
 CC STANDS FOR AWWA TAPER THREAD (C.C.)



304 STAINLESS STEEL WASHER (NOT INCLUDED ON FN OPTION)

304 STAINLESS STEEL TEFLON COATED NUT OR CAST BRASS ALLOY C83600 NUT W/ INTEGRAL WASHER WITH OPTION FN

CAST LEAD FREE BRASS ALLOY C83600/C87850



304L STAINLESS STEEL STRAP

DR. BY	AOD	3/24/23	UNLESS OTHERWISE NOTED	THIRD ANGLE PROJECTION		C.B. NO.
CHKR			BREAK CAST CORNER(S)---			
ENGR			BREAK MACH CORNER(S)---	PURCH.	FINISH	PATT. NO.
MGR			TOLERANCES	REF. NO.	SCALE	
MFG			UNLESS OTHERWISE NOTED	STR. NO.		
TOOL			LINEAR	ANGULAR		
FDRY			±	±		
MAT'L: SEE DRAWING CALLOUTS						
			DESCR.	NUMBER		
			18"-24" BR2W STYLE SERVICE SADDLE WITH ALL AVAILABLE TAP OPTIONS	BR2W-L		