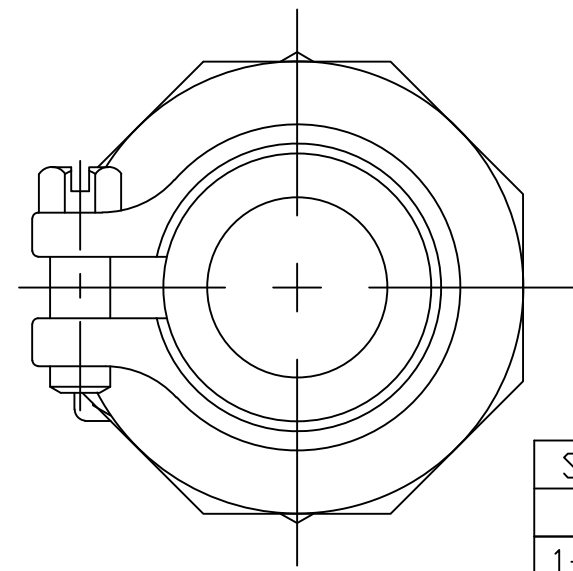


No.	DESCRIPTION	MATERIAL
1	BODY	LEAD FREE BRASS ALLOY ASTM B584
2	STEM	LEAD FREE BRASS ALLOY ASTM B584/B371
3	O-RING	EPDM D2000
4	CAP	CAST BRASS ALLOY ASTM B584
5	SOLID PIN	AISI 303 STAINLEES STEEL
6	BALL	LEAD FREE BRASS ALLOY ASTM B584
7	GASKET - SEAL	EPDM D2000
8	O-RING	EPDM D2000
9	END PIECE	LEAD FREE BRASS ALLOY ASTM B584
10	COMP GSKT	BUNA N ASTM D2000
11	WASHER	POLYPROPYLENE
12	CPLG NUT	CAST BRASS ALLOY ASTM B584
1" ONLY		
13	SCREW	18-8 STAINLESS STEEL



SIZE	ØA	B	C	D	E
1	1.000	4.233	1.150	2.566	3.716
1-1/2	1.500	4.906	1.500	3.372	4.872
2	2.000	5.776	1.820	3.919	5.739

DRFTR	AD	03/13/23	MUELLER	
CHKR			UNLESS OTHERWISE NOTED SURFACE PREPARATION: BREAK CORNER(S) ---- .000 SURFACE FINISH -- XX RMS	THIRD ANGLE PROJECTION
ENGR				REF. No.
MGR			TOLERANCE(S): LINEAR ----- ± .000 ANGULAR ----- ± 0°00'	FULL
BY	DATE			
STK No:				
MAT'L:				
DESCR.	INLINE BALL CURB VALVE FIP x PJ (IPS PVC)			DWG NUMBER V25100N

MEETS ALL REQUIREMENTS OF AWWA C800
 ALL STEMS ARE LEAD FREE BRASS ALLOY C89833/C69300
 ALL WETTED PARTS ARE LEAD FREE BRASS ALLOY C89833/C87850
 ALL NON WETTED PARTS ARE BRASS ALLOY C83600/C87850

TITLE TO AND OWNERSHIP OF THIS ENGINEERING DATA REMAINS IN Mueller Co. NO USE IS TO BE MADE OF THIS DATA EXCEPT AS SPECIFICALLY AUTHORIZED BY Mueller Co. ASSENT ON THE PART OF THE RECIPIENT TO THESE CONDITIONS IS PRESUMED

DWG NUMBER
V25100N